

Chatswood Education Precinct

Term 3 Project Update

August 2019



This image is an example of facilities we are building for students across NSW

The Chatswood Education Precinct will include the redevelopment, relocation and expansion of Chatswood Public School, Chatswood High School and Chatswood Intensive English Centre (IEC).

Investing in our schools

The NSW Government is investing \$6.7 billion over the next four years to deliver 190 new and upgraded schools to support communities across NSW. In addition, a record \$1.3 billion is being spent on school maintenance over five years. This is the largest investment in public education infrastructure in the history of NSW.

Progress summary

School Infrastructure NSW is committed to keeping you informed about the Chatswood Education Precinct.

Close to 300 community members participated in four information sessions at Chatswood Public School and High School in May and June 2019. Many community members have also emailed and called us to share their views on a range of topics.

The community feedback received has helped inform the FAQs available on the Precinct webpage. The feedback has also been reviewed by the project team to assist in the development of the precinct masterplan.

The project team are preparing the submission for the State Significant Development (SSD) Application and anticipate lodgement in late 2019. We will share the plans at information sessions scheduled to be held in Term 4.

Further consultation will follow the SSD Application submission as part of the detailed design phase of the project.

Next steps

Demountable relocation (End 2019)

To support the Precinct upgrade, the High School demountable buildings located in the north east corner will be relocated closer to the north end of the sports field and remain in place until project completion.

The project team will work with the Principal and staff to determine the relocation timing to minimise disruption to teaching and learning. As plans progress, we will share more details about the relocation.

IEC relocation (End 2019)

The Intensive English Centre will relocate to St Ives High School.

The project team will work with both the High School Principals to manage the relocation timing to avoid disruption to teaching and learning.

A Project Reference Group has been formed to support the relocation to St Ives. Information sessions will be held for teachers, students and families in Term 3. Invitations will be issued in the coming weeks.

New building (Mid 2020)

Building R is a new four-storey building delivering innovative learning and teaching spaces and will be located on the north east corner on Centennial Avenue.

To commence works on the Precinct, a Complying Development Application will be lodged to gain approval to commence construction of Building R.

The new building is central to supporting the staged delivery of the project and minimising disruption during the Precinct construction.

Complying development applications are determined by council or an independent certifier. Complying development applications must meet stringent planning and environmental requirements through a set of prescribed approval conditions.

Building R will accommodate Public School students throughout the staged construction. It will then be refitted for years 7 to 9 marking the final stage of the Precinct delivery.

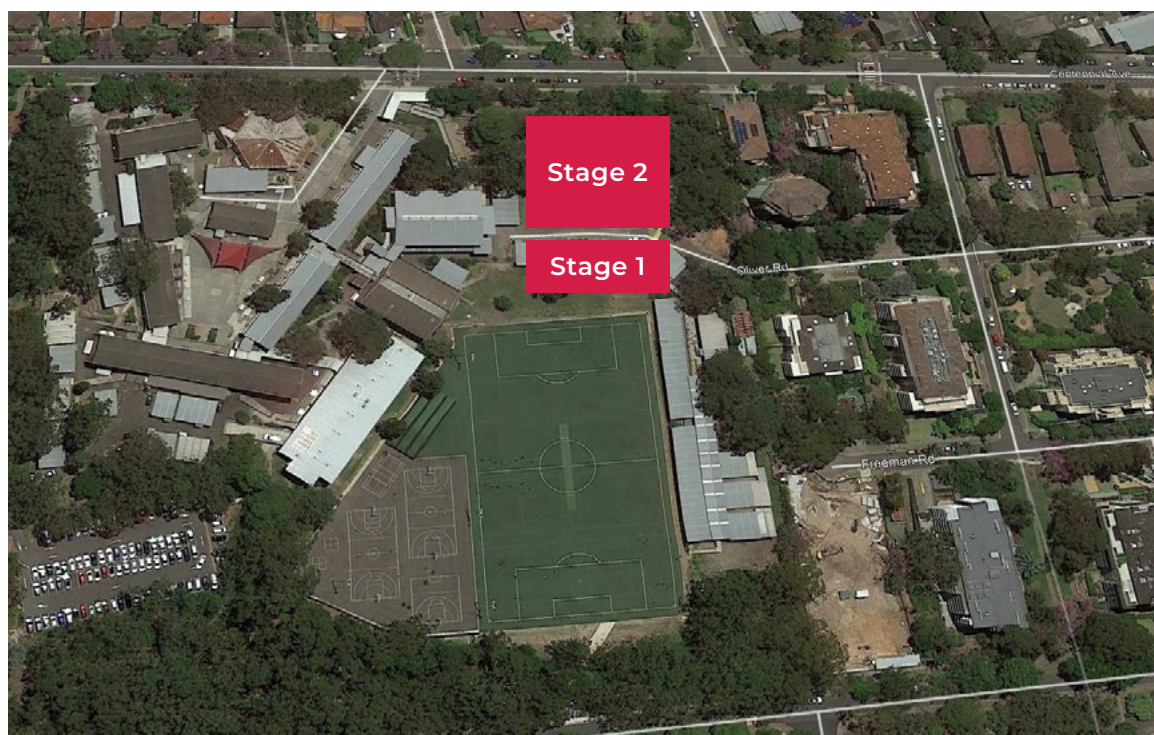
For more information contact:

School Infrastructure NSW

Email: schoolinfrastructure@det.nsw.edu.au

Phone: 1300 482 651

www.schoolinfrastructure.nsw.gov.au



Stage 1

Relocation of School demountables to the northern end of the sports field

Stage 2

Construction of Building R