

Chatswood Public School

Works notification – December 2019

Improvement works at Chatswood Public School

This is a weekly update to keep you informed on maintenance works at Chatswood Public School in the lead up to back to school Day 1, Term 1, 2020.

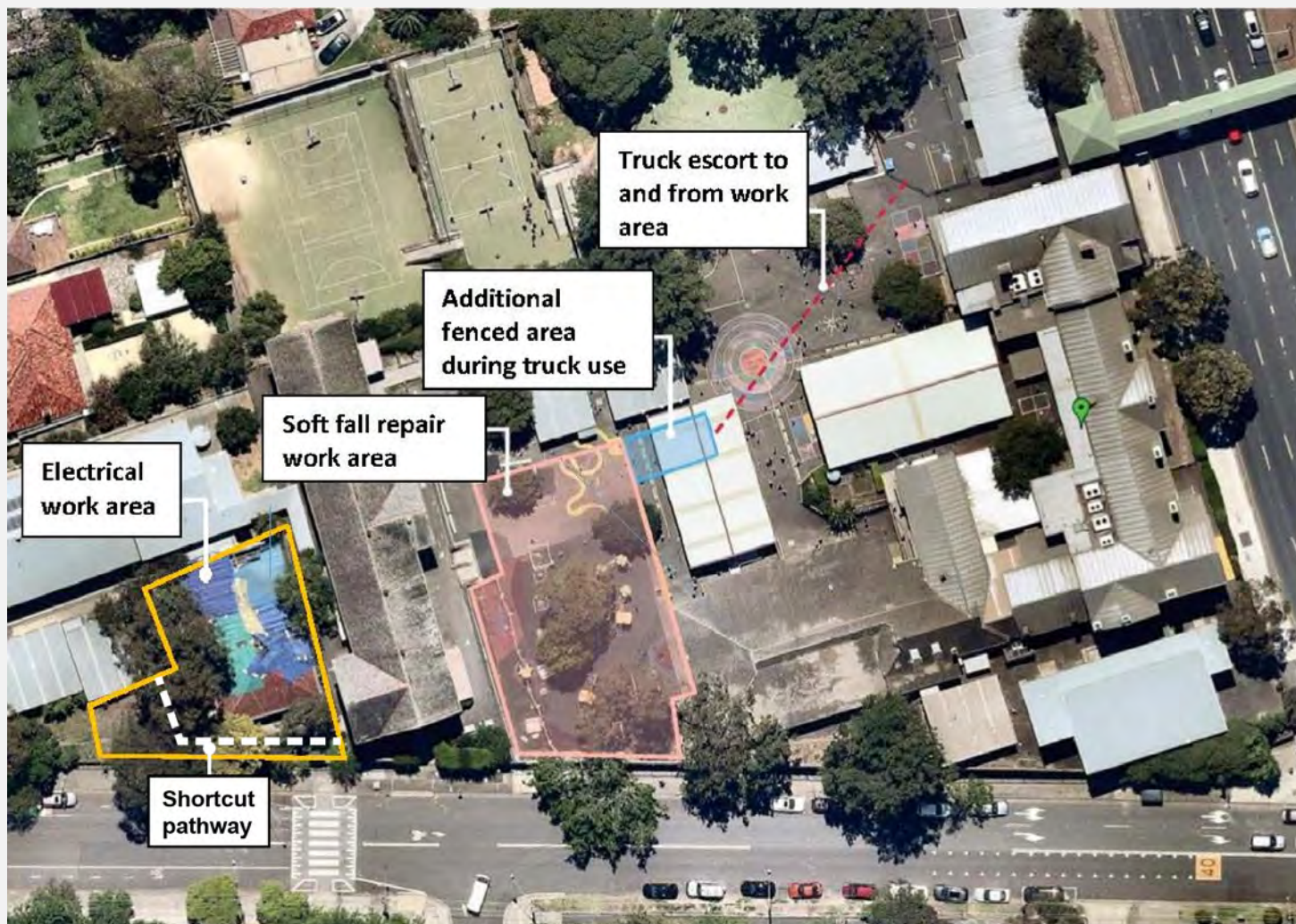
Work commencing week 9 December 2019:

- Work continues on repair to the soft fall area surrounding the kindergarten play equipment, including preparation of the site to make a level play space.
- Trucks continue to move material on and off site via escort with spotters in place.
- Truck movement will occur during the following hours: 6:30am-7:30am, 9:30am-10:30am, 2:15pm-2:45pm, and 4:00pm-5:30pm.
- Fencing with fabric mesh will be installed around the Block C work area zone, to enable preparation for the relocation of the electrical distribution board away from Block C.
- Shortcut pathway behind Block C to be fenced off as part of Block C work area zone – this will not affect access to classrooms or play space.

Upcoming Activity:

- Relocation of the electrical distribution board away from Block C to occur in December to prepare for the removal of Block C.
- Removal of Block C in the coming months, pending DA approval (DA lodged with Willoughby Council on 8 November 2019 and on exhibition until 11 December 2019).
- Minor refurbishment of Buildings A and B including painting and flooring.

We are here to make sure that work is completed safely and efficiently, while also minimising impacts on the school and community at every opportunity.



Public school soft fall work area and Block C work area

If you have any queries relating to these maintenance works, please contact us using the information below.

For more information contact

School Infrastructure NSW

Email: schoolinfrastructure@det.nsw.edu.au

Phone: 1300 482 651

www.schoolinfrastructure.nsw.gov.au