

Chatswood Public School

Works notification – November 2019

Improvement works at Chatswood Public School

This is a weekly update to keep you informed on maintenance works at Chatswood Public School in the lead up to back to school Day 1, Term 1, 2020.

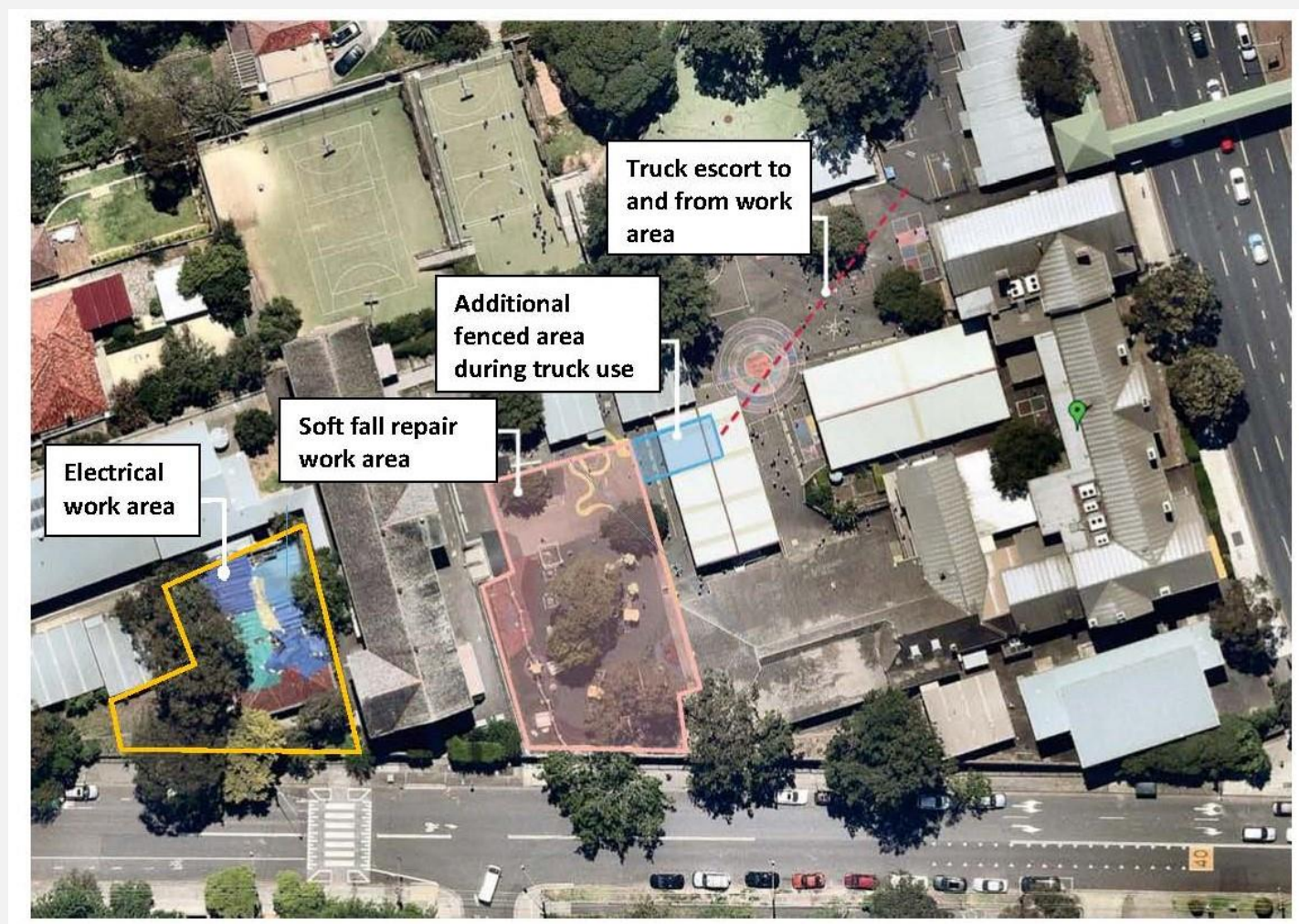
Work commencing week 25 November 2019:

- Work continues on repair to the soft fall area surrounding the kindergarten play equipment at the Public School.
- Trucks will re-commence work to remove demolished soft fall material from the exclusion zone, exiting via the Pacific Highway access point.
- Trucks will continue to remove material via escort with spotters in place during the following hours: 6:30am-7:30am; 9:30am-10:30am, 2:15pm-2:45pm, 4:00pm-5:30pm.
- Maintenance works continue to take place during standard construction hours between 7am and 5:30pm, Monday to Friday and 8am to 1pm, Saturday. Trades persons will visit the school on Sundays as required to locate electrical services, as part of Block C removal preparations.
- A site layout map is provided overleaf, showing the location of the work area for the soft fall repairs and access point.

Upcoming Activity

- Trucks will move material on and off site via escort with spotters in place during the following hours: 6:30am-7:30am; 9:30am-10:30am, 2:15pm-2:45pm, 4:00pm-5:30pm.
- Soft fall site to be prepared in coming weeks to make a level play space, before installing new soft fall material.
- Electrical distribution board to be relocated in December away from Block C to prepare for the removal of Block C.
- Fencing with fabric mesh to be installed next week around Block C work area.
- Shortcut pathway behind Block C to be fenced off as part of Block C work area zone – this will not affect access to classrooms or play space.
- Removal of public school Block C in the coming months, pending DA approval (DA lodged with Willoughby Council on 8 December 2019).
- A site layout map is provided overleaf, showing the location of the work area for the Block C works.

We are here to make sure that work is completed safely and efficiently, while also minimising impacts on the school and community at every opportunity.



Public school soft fall work area and electrical relocation work area

If you have any queries relating to these maintenance works, please contact us using the information below.

For more information contact

School Infrastructure NSW

Email: schoolinfrastructure@det.nsw.edu.au

Phone: 1300 482 651

www.schoolinfrastructure.nsw.gov.au