



Buildings P1 (left) and P2 (right) facing the newly landscaped central courtyard

Chatswood Public School

Day 1 Term 1 Welcome Pack | January 2023

Welcome to your new Buildings P1 and P2

We're excited that Buildings P1 and P2 are now finished and ready for you to use as part of the upgrade of Chatswood Public School. Buildings P1 and P2 will deliver:



Outdoor covered learning and play spaces in P1 on lower ground 2 and ground floors



Outdoor covered learning and play spaces in P2 on ground floor and rooftop



Specialist facilities to support inclusive learning including a sensory garden



Amphitheatre



New library



Flexible general learning classrooms



New staff room



New student and staff amenities



Building P1 lower ground floor play space with climbing wall, known as The Cave

Message from your Principal

It is with great excitement that we start the school year in our new buildings, P1 and P2.

Students and staff will benefit from the outdoor covered learning and play spaces, specialist facilities to support inclusive learning including a sensory garden, the amphitheatre co-funded by the school, a new library and new staff room.

Each of our new buildings has been purposefully designed to complement our current teaching and learning strategies. I am confident that students and staff will make full use of the modern and flexible learning spaces.

I extend my gratitude to our staff, students and parents who have been involved in helping achieve this milestone and thank the school community for your patience while construction continues on the remaining work, including the new hall (Building G), the sports court behind Building A, as well as landscaping and refurbishment works. I am certain you will be pleased with the outcome.

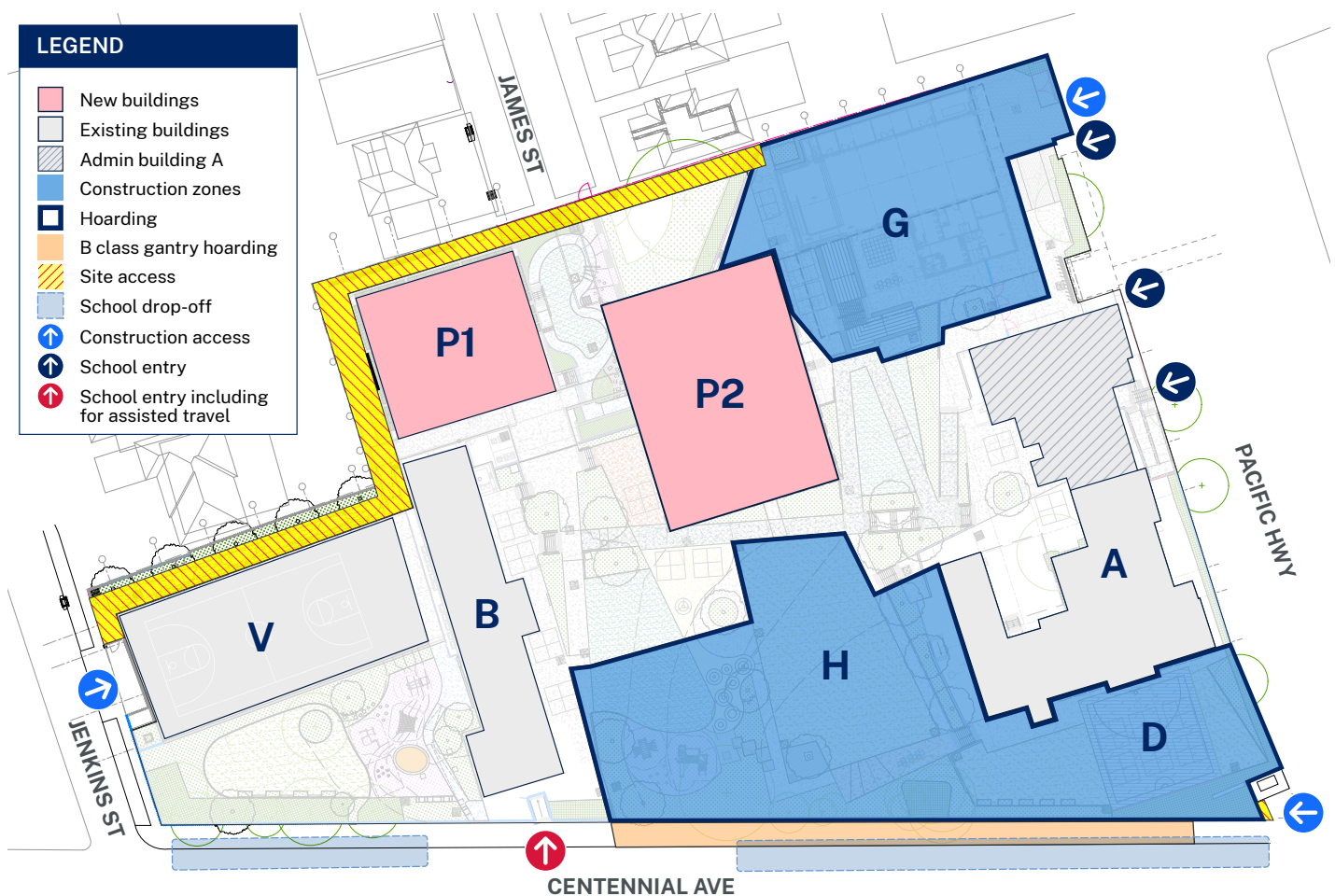
Alex Montgomery, Principal



Flexible support classroom in the Inclusive Learning Hub



New school upgrade map



Access

Access to the public school will remain through the Pacific Highway and Centennial Avenue entrances. Assisted travel for the support unit in Building P1 will temporarily be via the pick up and drop off zone at Centennial Avenue during construction. When the whole school upgrade is finished, support unit access will be via the Jenkins Street car park.

What's on each level?

BUILDING P2

BUILDING P1

LEVEL 4

Learning
Neighbourhood

LEVEL 4 ROOFTOP

Play space

LEVEL 3

Learning
Neighbourhood

LEVEL 3

Learning
Neighbourhood

LEVEL 2

Learning
Neighbourhood

LEVEL 2

Learning
Neighbourhood

LEVEL 1

Learning
Neighbourhood

LEVEL 1

Library &
staff amenities

GROUND

Undercover
learning and
play space

GROUND

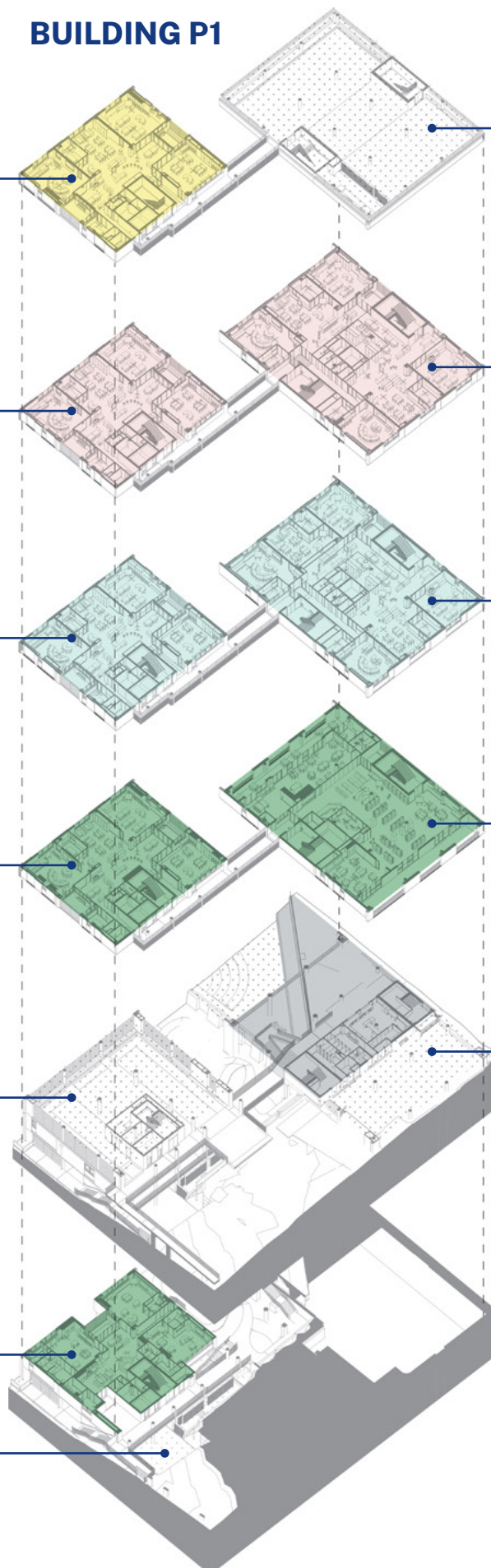
Canteen,
undercover learning
and place space,
and amphitheatre

LOWER GROUND 1

Support learning
neighbourhood

LOWER GROUND 2

Undercover
learning and
playspace



Design features

Buildings P1 and P2 were designed to maximise the opportunity to integrate play spaces and outdoor learning and to retain the character of the existing school buildings. The buildings have been designed inclusively to allow for ease of movement and access to the different learning spaces, with lifts throughout and a ramp on the ground floor. They are connected to each other on all levels, creating a seamless flow for students and staff. The building itself has several sustainable features, including solar panels, ventilation control measures, and rainwater tanks. Both buildings have significantly increased outdoor areas for learning and play, including the rooftop of Building P2 and the covered areas in P1, which will allow students to enjoy views across the neighbourhood.



Building P2 rooftop playspace with views across the neighbourhood



Building P1 Sensory Garden, adjacent to the Inclusive Learning Hub

Flexible learning environments

Buildings P1 and P2 learning spaces have been designed to incorporate flexibility, with openable and adaptable classroom configurations, breakout learning spaces, moveable furniture and writable surfaces. This is in addition to technology that supports greater collaboration and improved learning outcomes.

Designed with students at the centre, flexible learning spaces allow for teaching that suits individual needs and interests.

Our new learning spaces are designed to facilitate a broad range of learning modes, activities and experiences:



Collaboration



Discussion



Feedback and reflection



Guided



Explicit



Demonstration



Experiential



Independent



Building P1 ground floor covered outdoor learning area with views across the neighbourhood



Building P2 general learning classroom with SMART TV and moveable furniture offering two collaborative style learning areas

Technology supports other activities to achieve learning goals

Students use technology as a learning tool, along with other learning activities, to:

- investigate
- create
- communicate
- collaborate.

Digital technology helps students to collaborate to achieve their learning goals.

Learning Space – Physical/Digital/Social

- Zones for different activities with furniture and resources, such as booths, standing tables and withdrawal spaces.
- Spaces are designed flexibly, to support sharing by multiple learning groups.
- Spaces can be connected by glass or sliding doors to extend the learning space.
- Technology integrated into the space to extend learning.
- Wi-fi accessible across all learning areas.
- Learning spaces support informal and formal learning activities.
- Breakout spaces support collaboration and social learning, indoors and outdoors.
- Breakout spaces support teacher preparation.



Outdoor Amphitheatre can be used as a flexible learning space or additional play space



Building P1 general learning classroom with flexible furniture positioning

Frequently asked questions

What will Buildings P1 and P2 be used for?

In addition to general learning spaces, Buildings P1 and P2 have the following learning environments and amenities:

- inclusive Learning facilities including a sensory garden
- new library
- four outdoor learning and play spaces across three levels, including the P2 rooftop play space, P1 lower ground 2 and ground floor covered outdoor learning and the P2 amphitheatre
- staff room
- canteen
- staff and student amenities.

When will the remaining works be finished, including the new public school hall?

The new school hall in Building G, will be finished in the second half of 2023. The overall upgrade to Chatswood Public School and Chatswood High School is on track to be finished in late 2023.

What outdoor space will be available for Chatswood Public School students in 2023?

From Day 1 Term 1 2023, Chatswood Public School students will have continued access to the sports court and the nature play space to the west of Building B, and to the existing play space in the central courtyard. The new outdoor space will be open on the rooftop play space on Building P2, covered soft fall play space in Building P1 lower ground level 2, ground floor and the sensory garden.

Where are the drop off and pick up zones?

In addition to general learning spaces, Buildings P1 and P2 have the following learning environments and amenities:

- Kindergarten – P2 ground floor
- Stage 1 (year 1 and year 2) – P1 ground floor billabong
- Stage 2 (year 3 and year 4) – sports court
- Stage 3 (year 5 and year 6) - the old hall

Contact us

For more information about this project, contact School Infrastructure NSW:

Website: schoolinfrastructure.nsw.gov.au

Email: schoolinfrastructure@det.nsw.edu.au

Phone: 1300 482 651

For information about school activities and operations, contact the school directly:

Website: chatswood-p.schools.nsw.gov.au

Email: chatswood-p.school@det.nsw.edu.au

Phone: 02 9419 6127