



Building S West (left) and East (far right, partial view), facing south

Chatswood High School

Day 1 Term 1 Welcome Pack | January 2023

Welcome to the new Building S

We're excited that Building S is now finished and ready for you to use as part of the upgrade of Chatswood High School. Building S will deliver:



Specialist teaching facilities such as maths and science, including wet and dry laboratories



Music classrooms across the whole lower ground floor



Dedicated visual arts classrooms and facilities including a dark room, kiln and outdoor rooftop workshop space



Flexible breakout areas and smaller learning spaces on every floor



New staff room



New student and staff amenities



Building S level 3 - visual arts outdoor learning workshop

Message from your Principal

It is with great excitement that we start the school year in our new facility, Building S.

Students and staff will benefit from the specialist teaching facilities such as maths and science, including wet and dry laboratories, dedicated visual arts classrooms and facilities including a dark room, kiln and outdoor rooftop workshop space, music classrooms, new staff room and new amenities for students and staff.

Each of our new buildings has been purposefully designed to complement our current teaching and learning strategies. I am confident that students and staff will make full use of the modern and flexible learning spaces.

I extend my gratitude to our staff, students and parents who have been involved in helping achieve this milestone and thank the school community for your patience while construction continues on the remaining work. Building Q will be delivered in mid 2023, consisting of 4 levels including general learning spaces, a canteen, an admin/staff study and the new library. The new hall (Building T), landscaping and refurbishment works will follow. I am certain you will be pleased with the outcome.

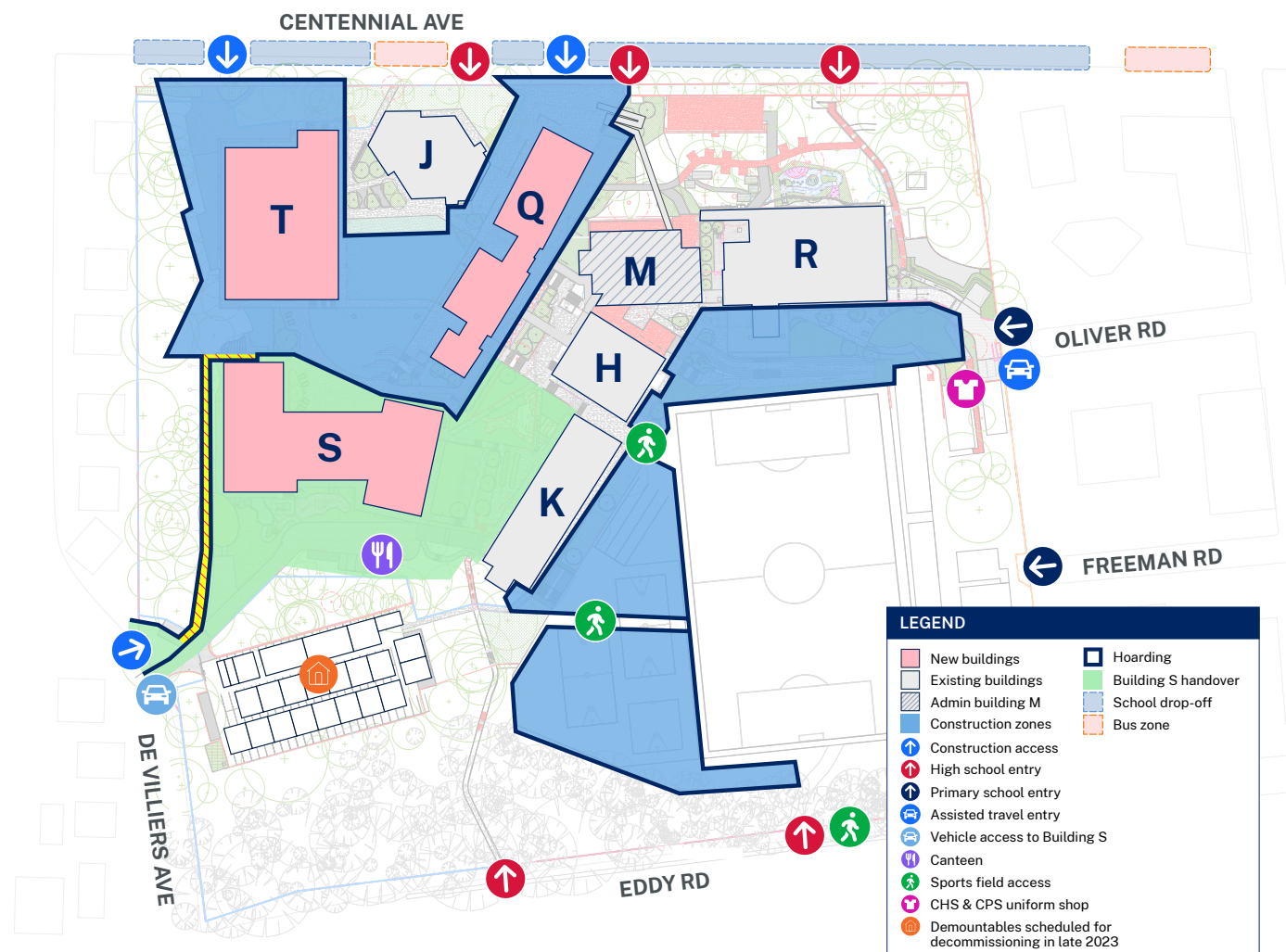
David Osland, Principal



Building S East - specialist science laboratory



New school map / upgrade map



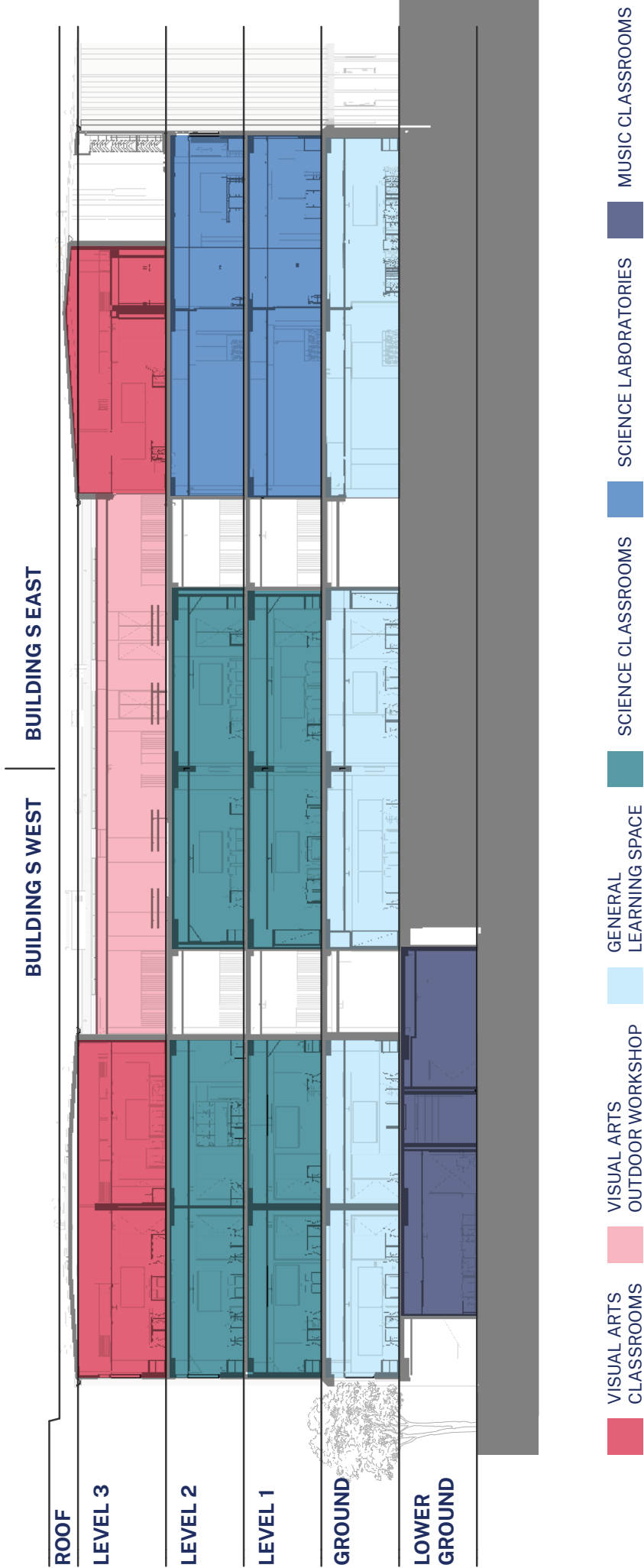
Access

While main works are continuing to build Buildings Q and T (Hall), vehicle access to Building S will be via De Villiers Avenue. Pedestrian access for students and staff will be through new and existing footpaths from Buildings H and K.

Design features

Building S was designed to integrate into the existing tree scape and retain the character of the local area. The building itself has several sustainable features, including solar panels, ventilation control measures and rainwater tanks.

The building has also been designed inclusively to allow for ease of access to the different learning spaces, with lifts and multiple stairs throughout.



Flexible learning environments

The learning spaces in Building S have been designed to incorporate flexibility with openable and adaptable classroom configurations, breakout learning spaces, moveable furniture and writable surfaces. This is in addition to technology that supports greater collaboration and improved learning outcomes.

Designed to provide flexibility, the learning spaces allow for teaching that suits individual needs and interests.

Our new learning spaces are designed to facilitate a broad range of learning modes, activities and experiences:



Collaboration



Discussion



Feedback and reflection



Guided



Explicit



Demonstration



Experiential



Independent

Technology supports other activities to achieve learning goals

Students use technology as a learning tool, along with other learning activities, to:

- investigate
- create
- communicate
- collaborate.

Digital technology helps students to collaborate to achieve their learning goals.

Learning Space – Physical/Digital/Social

- Zones for different activities with furniture and resources, such as booths, standing tables and smaller classroom spaces.
- Spaces are designed flexibly, to support sharing by multiple learning groups.
- Spaces can be connected by glass or sliding doors to extend the learning space.
- Technology integrated into the space to extend learning.
- Wi-Fi accessible across all learning areas.
- Learning spaces support informal and formal learning activities.
- Breakout spaces support collaboration and social learning, indoors and outdoors.

Flexible learning environments



Building S - general learning classroom with SMART TV technology and flexible furniture configuration



Building S East - breakout space for quiet learning or collaboration



Building S West - general learning classroom with SMART TV technology for small student groups



Building S - science dry classrooms separated by sliding door, providing flexibility and opportunity for collaboration



Building S - large breakout space with flexible furniture configuration

Frequently asked questions

What will Building S be used for?

In addition to general learning spaces, Building S will be used for:

- science and informal learning for both wet and dry labs and general classrooms
- visual arts and informal learning workshops and classrooms
- digital art room
- music classrooms
- staff study
- outdoor learning
- staff and student amenities.

When will the main works construction be completed?

The upgrade to Chatswood Public School and Chatswood High School is on track for completion in late 2023 and will be operational on Day 1 Term 1 2024.

When will the remaining temporary classrooms be removed from the car park?

Temporary classrooms on the car park will be removed when Buildings Q and T are finished in late 2023. The temporary classrooms at the Bush Campus will remain to accommodate fluctuations in enrolments.

Will the Bush Campus use the new Building S facilities?

No, the new facilities are for Chatswood High School use only.

When will the support unit's sensory garden be completed?

The support unit's sensory garden is on track for completion by Day 1 Term 3.

What outdoor space will be available for Chatswood High School students in 2023?

From Day 1 Term 2 2023, Chatswood High School students will have access to the sports court and meadow area to the north of Building R, the sports field, table tennis and existing hall.

When will the sports court and cricket nets be available at Chatswood High School?

During Term 1 2023, the sports court and cricket nets around the sports field will be refurbished and handed back to the school and community on Day 1 Term 2 2023.

Contact us

For more information about this project, contact School Infrastructure NSW:

Website: schoolinfrastructure.nsw.gov.au

Email: schoolinfrastructure@det.nsw.edu.au

Phone: 1300 482 651

For information about school activities and operations, contact the school directly:

Website: chatswood-h.schools.nsw.gov.au

Email: chatswood-h.school@det.nsw.edu.au

Phone: 02 9419 3611

