

# Project overview

The upgrade of Cecil Hills High School will include additional permanent learning spaces and core facilities to support the growing population in Western Sydney. The project will deliver:



New learning spaces



New staff facilities



Multipurpose hall



Fitness and movement spaces



Upgraded outdoor workshop



Accessibility improvements to existing ramps and walkways



An example of the type of facilities we are building for students across NSW

## Cecil Hills High School upgrade

For more information phone: 1300 482 651  
Email: [schoolinfrastructure@det.nsw.edu.au](mailto:schoolinfrastructure@det.nsw.edu.au)



# Concept design plan

A new building in the north eastern corner of the school site, along Frederick Road, will provide new flexible learning spaces, including some with a STEM (science, technology, engineering and mathematics) focus.

An extension to the school's existing gym/hall will create a multipurpose facility that includes a basketball court.

The design may change as part of the ongoing design development.



## LEGEND

Existing building	<b>C</b> Multi-purpose	<b>G</b> Arts	<b>L</b> Support unit	<b>B</b> Canteen extension
New building	<b>D</b> General learning	<b>H</b> Arts	<b>M</b> General learning	<b>C</b> New hall extension
<b>A</b> Administration	<b>E</b> Staff	<b>J</b> Staff	<b>N</b> General learning	<b>R</b> New block
<b>B</b> Canteen	<b>F</b> Library	<b>K</b> Workshop	<b>P</b> Substation	<b>S</b> New workshop

## Cecil Hills High School upgrade

For more information phone: 1300 482 651  
Email: schoolinfrastructure@det.nsw.edu.au



# Flexible learning spaces

Contemporary learning and teaching prepares students for a diverse and interconnected world. We are evolving the ways we teach our students new skills valued by a changing workforce, understand different ways students learn and support new ways of interacting with information through technology.

Flexible learning spaces are designed and equipped to support contemporary learning and teaching.

## What makes a flexible learning space?



### Learning space

- Different zones (areas of a building or floors) are designed to support a range of activities sometimes grouped by subject area
- Varied furniture allows for student choice, comfort and flexibility
- Spaces are flexibly connected allowing students to work in varied group sizes
- Connection between indoor and outdoor learning spaces



### Organisation

- Movement is encouraged for students and teachers to collaborate and interact
- More than one teacher may be available to students within the learning environment
- Students learn in classes, small groups or individually



### Teaching and learning

- Learning is personalised
- Learning is connected across different subject areas
- There is a focus on creativity and innovation with students prototyping, testing and using technology in creative ways



### Technology

- Technology is integrated into spaces to extend learning opportunities
- WiFi is available everywhere including outdoors
- Specialist equipment is available for students to innovate, communicate and create

## Cecil Hills High School upgrade

For more information phone: 1300 482 651  
Email: [schoolinfrastructure@det.nsw.edu.au](mailto:schoolinfrastructure@det.nsw.edu.au)



# How we build and upgrade schools

In all our new schools or school upgrades when working on design, we must meet our Educational Facilities Standards and Guidelines (EFSG) for both indoor and outdoor education facilities. The guiding principles of the EFSG provide our vision for learning environments and are enriched by the needs and goals of the school and local community. These guidelines guarantee that all new schools and school upgrades align with the NSW Department of Education's vision and can deliver the Australian curriculum while allowing the school community to contribute ideas towards making the school their own.

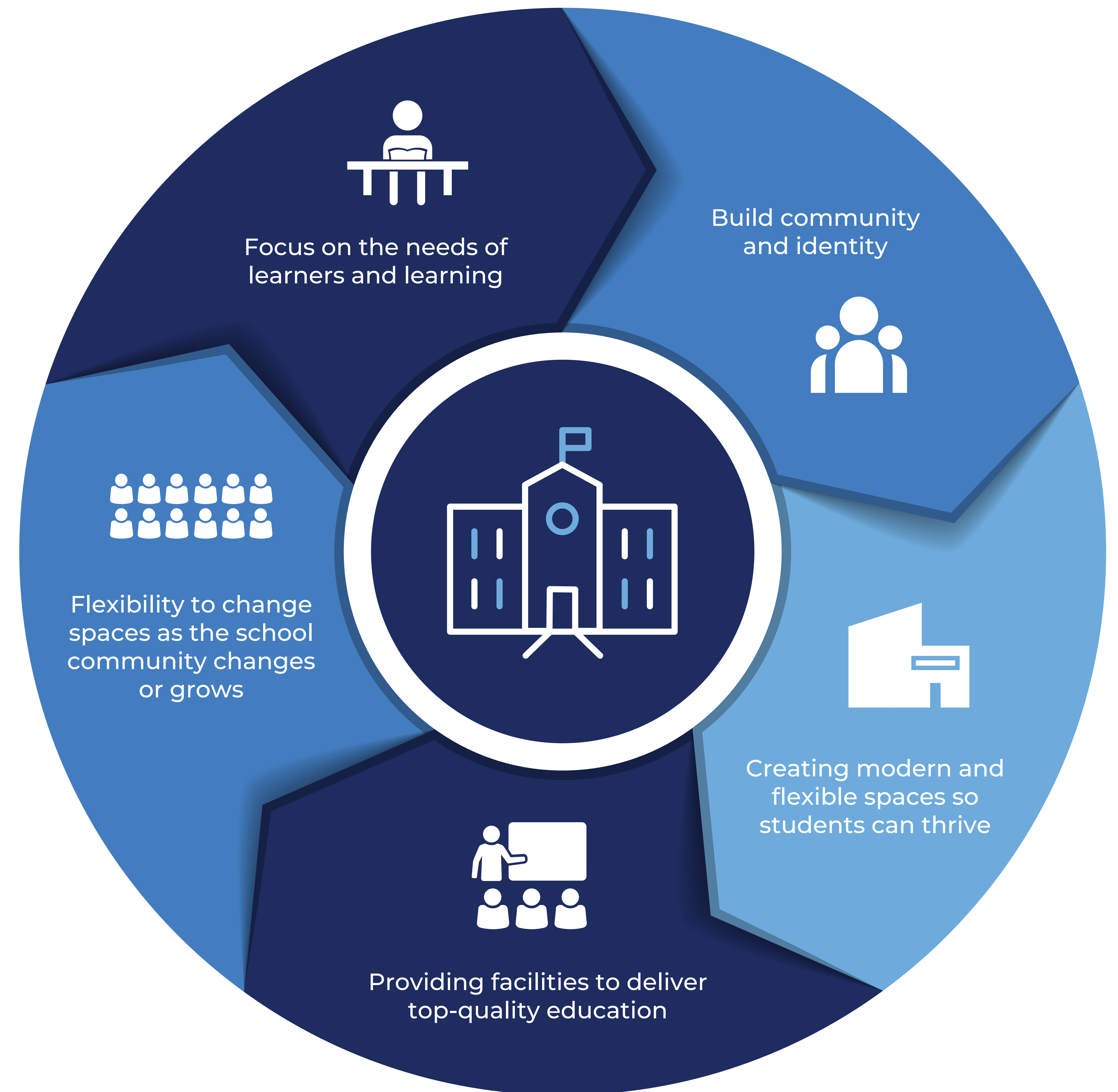
## Want to know more about how we build and upgrade schools?

We design and deliver schools to suit the individual needs of the local school community. We harness opportunities and solve challenges. As a result, no two schools are exactly the same.

What remains consistent is school infrastructure that empowers teachers to prepare students with the skills and capabilities they need to thrive in a rapidly changing and interconnected world.

Take a look at some of the upgrades we have delivered and see how these varied spaces support teaching and learning.

Visit [edu.nsw.link/SchoolShowcase](https://edu.nsw.link/SchoolShowcase) or scan the QR code.



## Cecil Hills High School upgrade

For more information phone: 1300 482 651  
Email: [schoolinfrastructure@det.nsw.edu.au](mailto:schoolinfrastructure@det.nsw.edu.au)



# What's next?

The upgrade to Cecil Hills High School is considered a State Significant Development (SSD) and therefore the NSW Department of Planning and Environment (DPE) will assess the development application (DA) for the project.

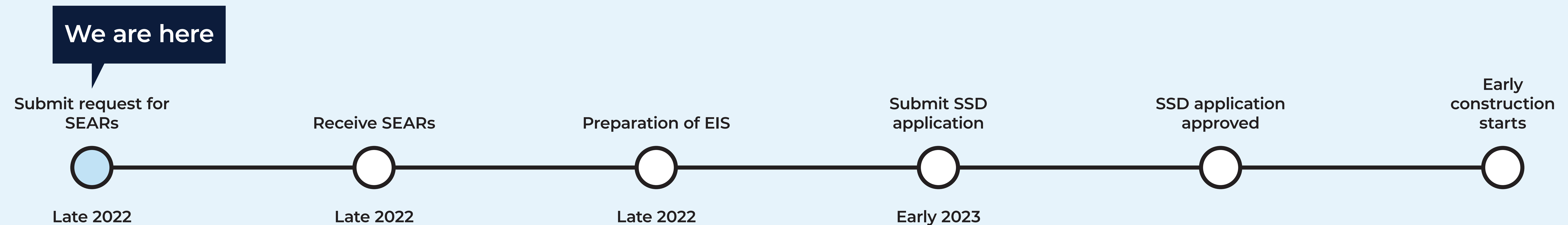
We will start the planning approval process by submitting a request to DPE for the Secretary's Environmental Assessment Requirements (SEARs) which will tell us the studies that need to be included as part of the application.

As part of the SSD application, we will prepare an Environmental Impact Statement (EIS). The EIS will contain the technical studies required by the SEARs and considers matters such as traffic, noise, operations, ecology, bushfire and construction management.

We will continue to refine the design for the upgrade and progress through the development approval process.

## Project timeline

*These dates are indicative only and may change.*



## Cecil Hills High School upgrade

For more information phone: 1300 482 651  
Email: [schoolinfrastructure@det.nsw.edu.au](mailto:schoolinfrastructure@det.nsw.edu.au)