



# Castle Hill Public School

## Project update

May 2022

### Investing in our schools

The NSW Government is investing \$7.9 billion over the next four years, continuing its program to deliver 215 new and upgraded schools to support communities across NSW. This is the largest investment in public education infrastructure in the history of NSW.

The NSW Department of Education is committed to delivering new and upgraded schools for communities across NSW. The delivery of these important projects is essential to the future learning needs of our students and supports growth in the local economy.

### Project overview

The NSW Government's 2021/22 Budget included funding for an upgrade to Castle Hill Public School, including additional permanent teaching spaces and core facilities to support the growing population in Western Sydney.

The project will deliver new permanent teaching spaces which will replace demountable buildings, new support teaching spaces, and upgraded hall and student amenities, administration and staff areas, and out of school hours care (OSHC) facilities.

### Progress summary

We are pleased to announce that the NSW Government has approved the business case for the Castle Hill Public School upgrade. The project now has approval to proceed.

Key consultants, including a project manager and an architect are being appointed for the project. Detailed site investigations, including traffic, heritage, and tree studies are underway at the school to inform the master planning for the project.

### Next steps

We will work with the school and department leadership representatives to develop the design aspects of the new school facilities. The designs will consider educational, operational, and service delivery requirements and will be shared with the community for feedback.



For a **Translation and Interpreting Service**, call **131 450** and ask them to call the Department of Education - School Infrastructure NSW on **1300 482 651**.

### For more information contact:

School Infrastructure NSW  
Email: [schoolinfrastructure@det.nsw.edu.au](mailto:schoolinfrastructure@det.nsw.edu.au)  
Phone: 1300 482 651  
[www.schoolinfrastructure.nsw.gov.au](http://www.schoolinfrastructure.nsw.gov.au)

## Castle Hill Public School upgrade

The information below takes you through the journey of upgrading or building a new school.

### Early planning

- Consideration and studies of demographic trends, education requirements, the condition of the existing school buildings, catchment boundaries, heritage requirements, transport links and partnership opportunities.
- Doing so means that we:
  - consider the needs of the local area now and into the future.
  - ensure the right school is designed for the community.
- An important step before an architect or other contractors are appointed and official community engagement commences.

### Planning

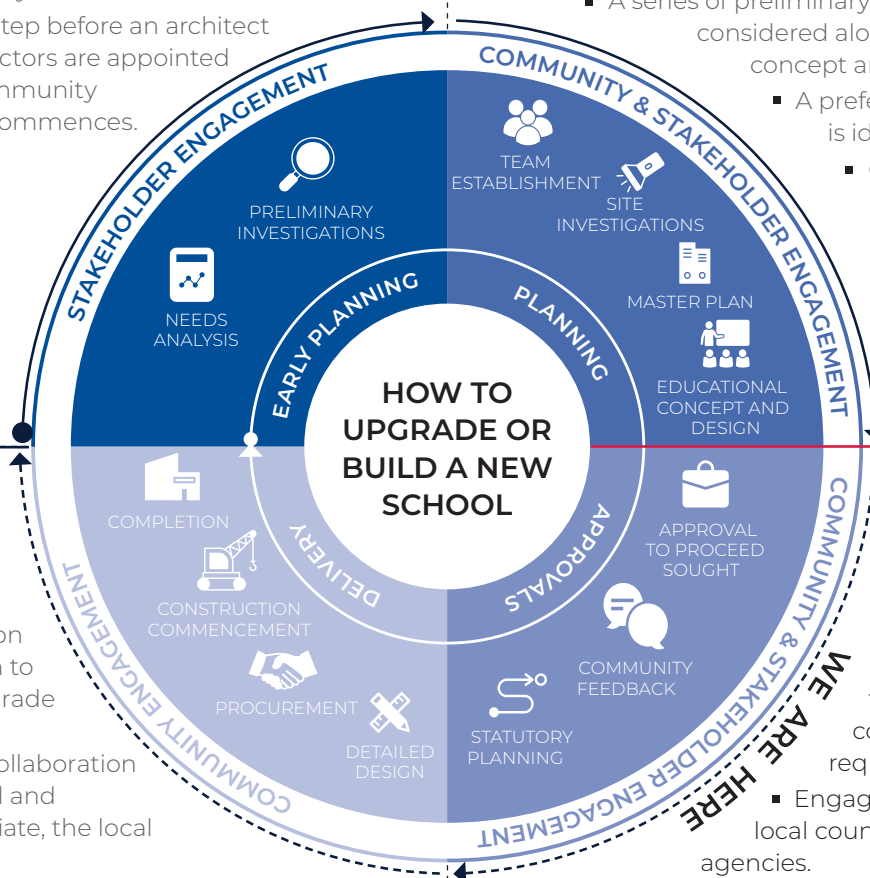
- Consultants such as architects and project managers are appointed.
- Investigation and review of site and development of master plan options.
- Master planning considers options for the general size, shape and form of buildings for a specific school site.
- A Project Reference Group (PRG) is established.
- Operational, educational and service delivery factors are understood and considered by the PRG.
  - A series of preliminary master plan options are considered along with the educational concept and design for the school.
  - A preferred concept design option is identified.
  - Once a preferred option is identified approval is needed in order to progress from planning through to project delivery.

### Delivery

- The construction works program to deliver the upgrade to the school is developed in collaboration with the school and where appropriate, the local community.
- Ongoing consultation with Principal, staff and other school users.
- Throughout detailed design and construction updates are provided to the local community.

### Approvals

- Workshops continue with school and local community to understand challenges and constraints and identify future requirements.
  - Engagement of technical specialists, local councils and other government agencies.
- Statutory planning approval process.
- Opportunity for local community to view and provide feedback upon submission of the Development Application.
- Scope of work and concept design is further defined.



For a **Translation and Interpreting Service**, call **131 450** and ask them to call the Department of Education - School Infrastructure NSW on **1300 482 651**.

### For more information contact:

School Infrastructure NSW  
Email: [schoolinfrastructure@det.nsw.edu.au](mailto:schoolinfrastructure@det.nsw.edu.au)  
Phone: 1300 482 651  
[www.schoolinfrastructure.nsw.gov.au](http://www.schoolinfrastructure.nsw.gov.au)

