

# Carlingford West Public School and Cumberland High School

## Planning update

November 2021

### Investing in our schools

The NSW Government is investing \$7.9 billion over the next four years, continuing its program to deliver 215 new and upgraded schools to support communities across NSW. This is the largest investment in public education infrastructure in the history of NSW.

### Planning for upgrades to Carlingford West Public School and Cumberland High School

The planning phase involves consideration and studies of demographic trends, education requirements, intake boundaries, heritage requirements, transport links and possible shared area opportunities. The planning phase also includes site investigations to understand the physical conditions within the school sites. Consultants such as architects and project managers have been appointed to investigate and review the site to develop the master plan. Master planning considers options for the general size, shape and form of the buildings for the school sites. Doing so means that we consider the needs of the local area now and into the future, and ensure the right school is designed for the community. This is an important step before local community engagement starts.

The following site investigations will be taking place across the Carlingford West Public School and Cumberland High School site from 27 November and are expected to be completed by 4 December 2021.

### Hazardous materials investigations

From 7.30 am to 5 pm on Saturday 27 November and again on Saturday 4 December, we will carry out a hazardous materials investigation of Buildings C, B and F at Cumberland High School and Building C at Carlingford West Public School. This work will determine if there are any hazardous materials within the building structures.

Safety measures and air monitoring will be put in place to ensure there is no risk to students, staff or the local community. A certified and licensed Asbestos Assessors/Hygienist will be carrying out the works in line with all applicable standards and codes of practice. The work will be supervised at all times.

### Services scanning and geotechnical investigation

From 7 am to 5 pm on Monday 29 November until Saturday 4 December, we will carry out scanning to locate inground services such as water, stormwater, sewer, gas and electrical. We will also conduct bore hole drilling to collect soil and other samples at various locations across the Carlingford West Public School and Cumberland High School sites. We expect we will need to drill about 40 boreholes on the sites, up to a maximum depth of seven metres.

We will use a track-mounted drill rig to drill these boreholes, which is roughly as loud as a commercial lawnmower. There will also be a small excavator on site to drill shallow boreholes, approximately 150 mm in diameter. The work will take up to two to three days at each school to complete.

The health, safety, and well-being of the school and the local community is our highest priority, and we will continue to keep the community updated.

---

### For more information contact:

School Infrastructure NSW  
Email: [schoolinfrastructure@det.nsw.edu.au](mailto:schoolinfrastructure@det.nsw.edu.au)  
Phone: 1300 482 651  
[www.schoolinfrastructure.nsw.gov.au](http://www.schoolinfrastructure.nsw.gov.au)

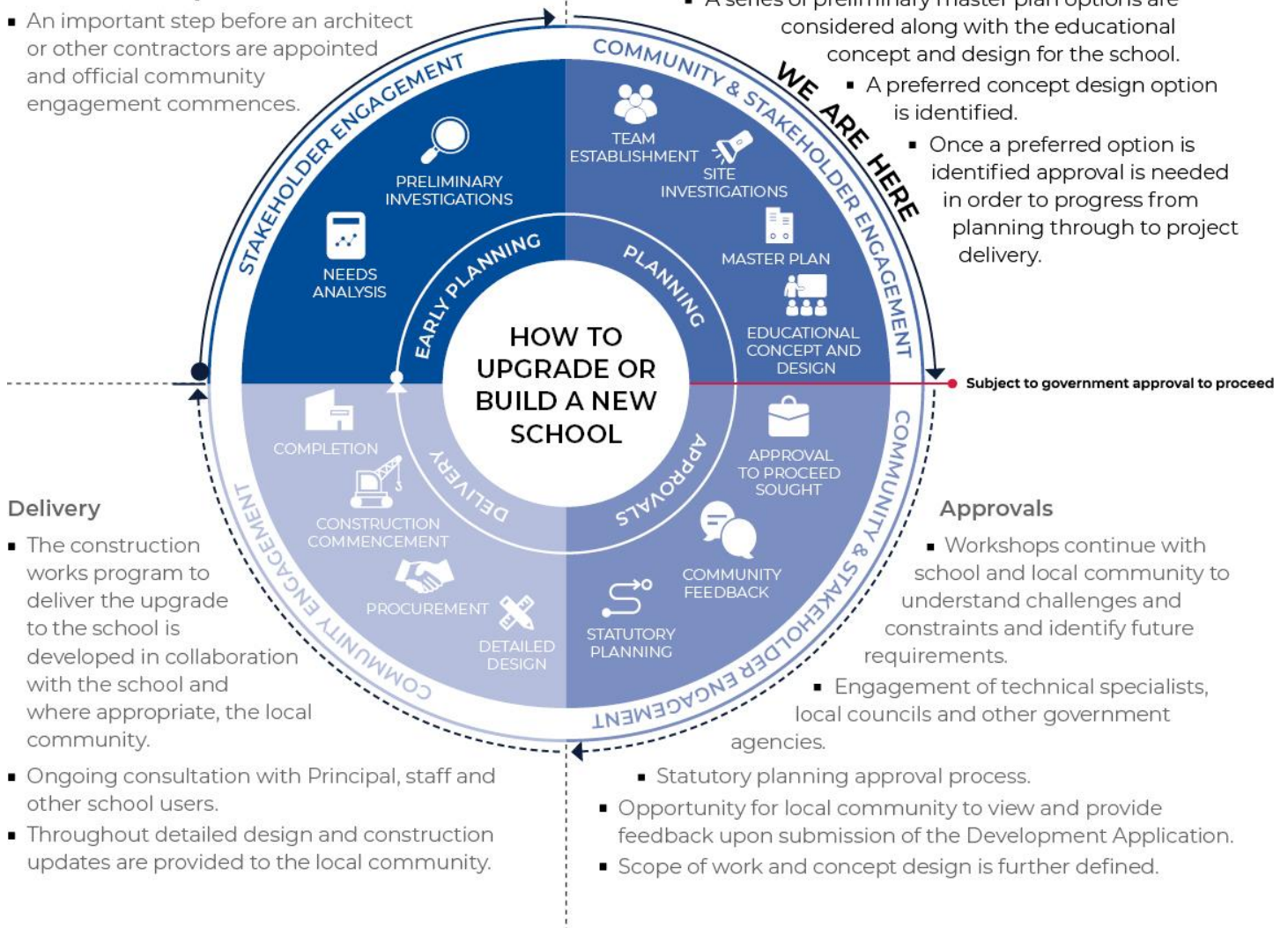
The information below takes you through the journey of upgrading or building a new school.

### Early planning

- Consideration and studies of demographic trends, education requirements, the condition of the existing school buildings, catchment boundaries, heritage requirements, transport links and partnership opportunities.
- Doing so means that we:
  - consider the needs of the local area now and into the future.
  - ensure the right school is designed for the community.
- An important step before an architect or other contractors are appointed and official community engagement commences.

### Planning

- Consultants such as architects and project managers are appointed.
- Investigation and review of site and development of master plan options.
- Master planning considers options for the general size, shape and form of buildings for a specific school site.
- A Project Reference Group (PRG) is established.
- Operational, educational and service delivery factors are understood and considered by the PRG.
  - A series of preliminary master plan options are considered along with the educational concept and design for the school.
    - A preferred concept design option is identified.
    - Once a preferred option is identified approval is needed in order to progress from planning through to project delivery.



### Delivery

- The construction works program to deliver the upgrade to the school is developed in collaboration with the school and where appropriate, the local community.
- Ongoing consultation with Principal, staff and other school users.
- Throughout detailed design and construction updates are provided to the local community.

### Approvals

- Workshops continue with school and local community to understand challenges and constraints and identify future requirements.
  - Engagement of technical specialists, local councils and other government agencies.
  - Statutory planning approval process.
- Opportunity for local community to view and provide feedback upon submission of the Development Application.
- Scope of work and concept design is further defined.

### For more information contact:

School Infrastructure NSW  
 Email: [schoolinfrastructure@det.nsw.edu.au](mailto:schoolinfrastructure@det.nsw.edu.au)  
 Phone: 1300 482 651  
[www.schoolinfrastructure.nsw.gov.au](http://www.schoolinfrastructure.nsw.gov.au)