

# Carlingford West Public School

Information pack | May 2021



Early artist impression of the new building Y in Carlingford West Public School

The NSW Government is investing \$7 billion over the next four years, continuing its program to deliver more than 200 new and upgraded schools to support communities across NSW. This is the largest investment in public education infrastructure in the history of NSW.

The NSW Department of Education is committed to delivering new and upgraded schools for communities across NSW. The delivery of these important projects is essential to the future learning needs of our students and supports growth in the local economy.

The upgrade will include:



46 new learning spaces



Upgrades to 9 existing learning spaces



Upgrades to school administration and staff areas



Upgraded hall



Upgraded canteen facilities



Upgraded library

## Project overview

An upgrade to the learning areas and facilities is being fast-tracked for Carlingford West Public School

It will include:

- 46 new learning spaces and upgrades to nine existing learning spaces
- upgrades to school administration and staff areas as well as the school hall, canteen and library.

The project is in the final stages of planning. The design is being finalised and has been developed in consultation with representatives from the Department of Education and Transport for NSW, Parramatta City Council, NSW Government Architect, Department of Planning, Industry and Environment as well as local Aboriginal groups.

## Our build approach

For this project, we will be combining the manufacture of building components, such as wall systems and facades, in a safe, clean and efficient factory environment off-site with onsite assembly. The parts will be transported to the school site on trucks and then assembled into place.

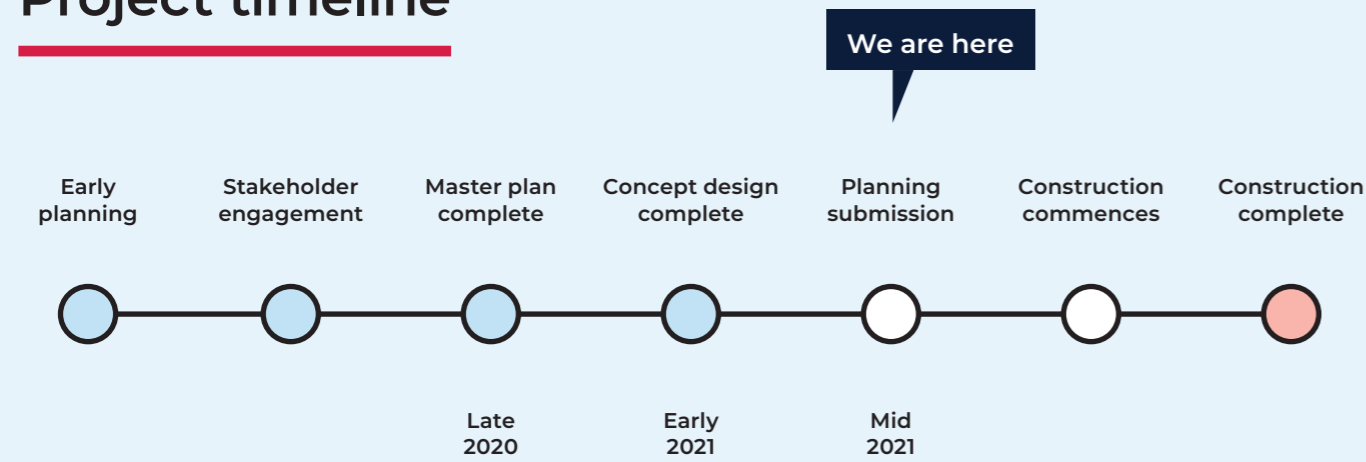
This approach has the potential to deliver significant safety and sustainability outcomes and drive productivity and quality efficiencies that can benefit Government, industry and communities.

Construction is expected to start after planning approval is received. We will keep you updated on these timeframes as the project progresses.

## Proposed school layout after build is complete



## Project timeline







Looking West, towards new Building Y across the southern play space



The courtyard between new Blocks J and C, looking through the new Block Y undercroft

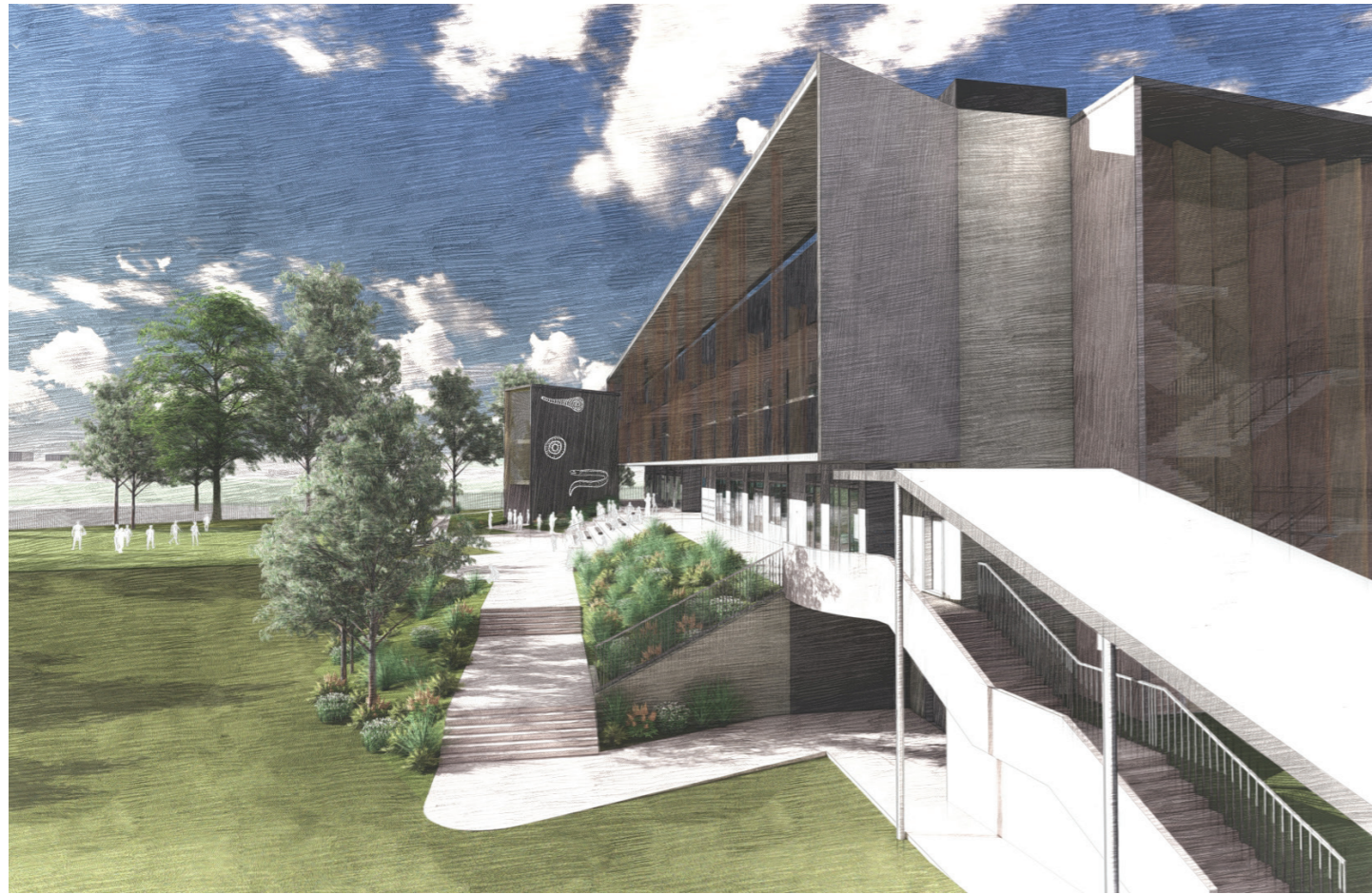


Looking South, beyond the play space towards the new Building J, with the new Building X on the left



Looking East from the Felton Road West entry towards the new Building Y

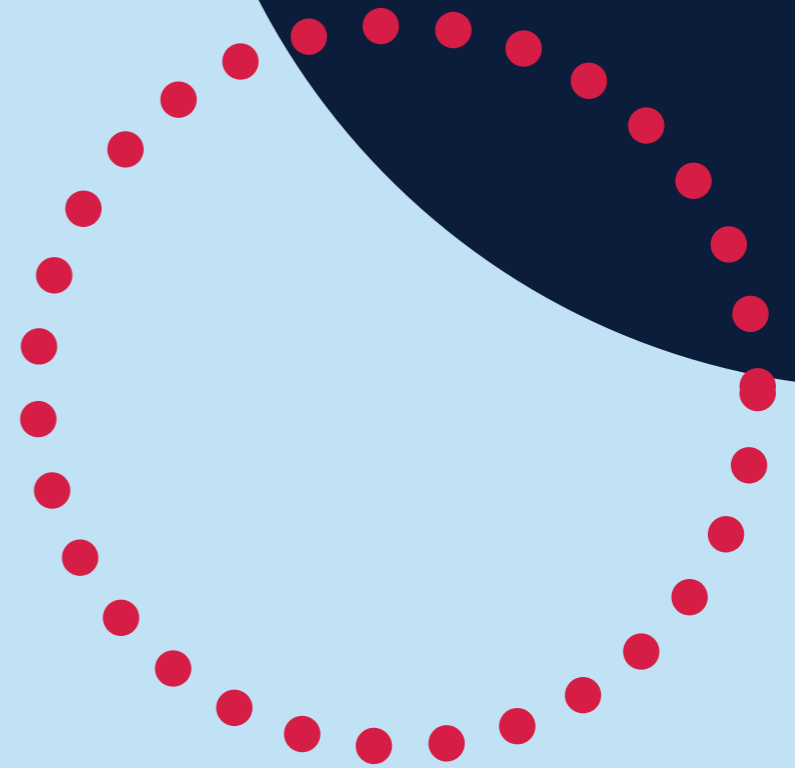




Looking North from Building C, to the new Building X, with the Northern play space on the left had side



Artist's impression of the future aerial view of Carlingford West Public School looking towards the East, from the Felton Road West boundary





## Frequently asked questions

### What happens next?

The next steps for the upgrade of Carlingford West Public School include:

- submitting the Environmental Impact Statement (EIS) for submission to the NSW Department of Planning, Industry and Environment (DPIE) as part of the State Significant Development (SSD) application
- early work and investigation activities to prepare and establish the site for work
- planning for the school temporary school to accommodate classes during construction.

When the project is placed on public exhibition, the community and other stakeholders can formally provide comments. Construction work can start onsite after the SSD application is approved.

### What is a State Significant Development (SSD) application?

SSD applications are used for projects that have special significance to the people and State of NSW. The Department of Planning, Industry and Environment (DPIE) is responsible for the planning approval process for SSD application, rather than a local council.

### I've heard the upgrades are being 'fast-tracked' – what does that mean?

The project is being fast-tracked as part of the NSW

Government's COVID-19 Recovery Plan. The plan details how the NSW Government will ensure we remain resilient and build a future- proof economy.

### Are these latest artist impressions subject to change?

The renders on display right now for the upgrades at Carlingford West Public School are concept designs only. Components, layouts and features are subject to change prior to the construction of the school. At this stage, these renders provide an idea of what we are planning to build and do not represent the final designs for the school.

### What are the temporary school arrangements whilst the work is underway?

To prepare for the upgrades to the school and to ensure continuity of student learning, we will soon prepare to install temporary classrooms. These classrooms will be similar to some already available on site but will be removed once the school build is complete.

We will share further information regarding the plan for the temporary school, including installation, in the coming weeks.

### When will the upgrades be complete?

The completion of upgrades is subject to the planning approval process.

## How do I get involved?

Your feedback is important to us. We are committed to working together with our school communities and stakeholders to deliver the best possible learning facilities for students.

It is not always possible to implement everyone's suggestions but we will work with school communities to ensure we have considered what is important to you.

## Stay informed



### Website

Stay up to date by visiting the School Infrastructure NSW website [schoolinfrastructure.nsw.gov.au](https://schoolinfrastructure.nsw.gov.au)



### Email

Contact the Community Engagement team by emailing [schoolinfrastructure@det.nsw.edu.au](mailto:schoolinfrastructure@det.nsw.edu.au)



### Phone

Contact us between 9:00am and 5:00pm, Monday to Friday on **1300 482 651**