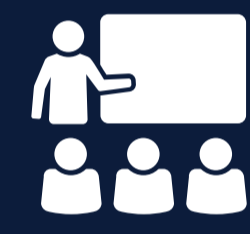


Project overview

Carlingford West Public School is being fast-tracked for an upgrade. It will include:



46 new learning spaces



Upgrades to 9 existing learning spaces



Upgrades to school administration and staff areas



Upgraded hall



Upgraded canteen facilities



Upgraded library

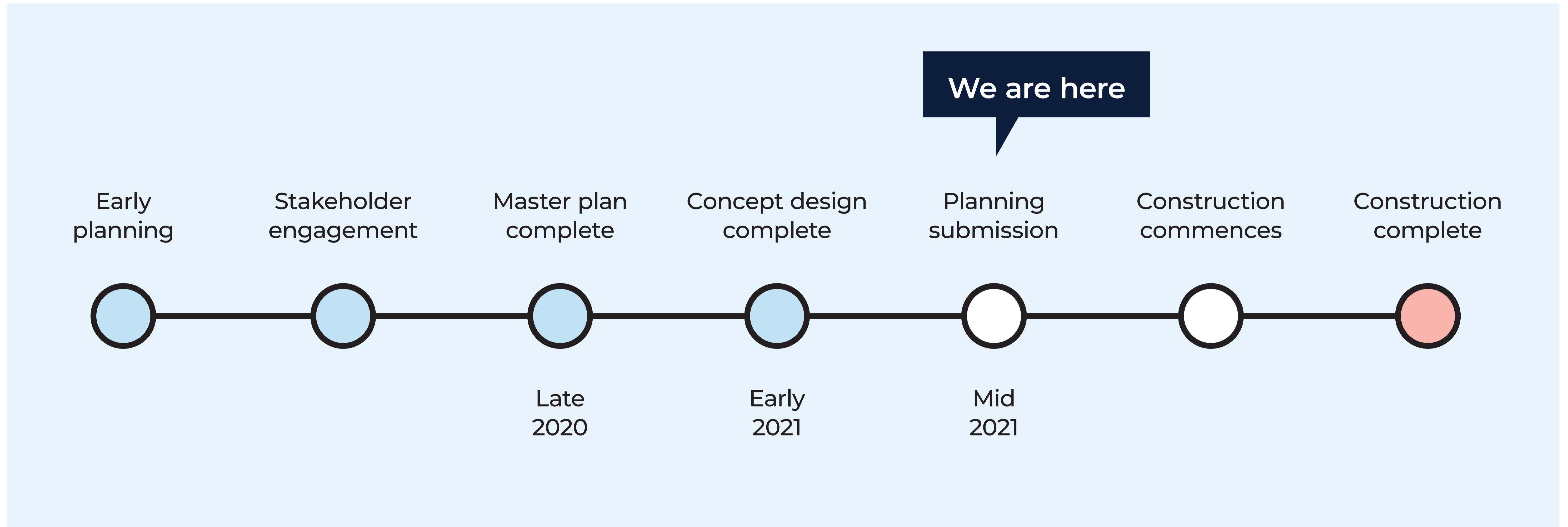


Artist impression looking East from the Felton Road West entry towards the new Building Y

Carlingford West Public School upgrade

For more information phone: 1300 482 651
Email: schoolinfrastructure@det.nsw.edu.au

Project timeline



Carlingford West Public School upgrade

For more information phone: 1300 482 651
Email: schoolinfrastructure@det.nsw.edu.au

Proposed school layout



LEGEND			
	Existing COLA		Pedestrian access
	Existing building		Vehicle access
	Proposed refurbishment - exempt/CDC		Kiss & drop
	Proposed new building - CDC		Parking
	Proposed new building - SSSA		Bicycle parking
	Outdoor play areas		Primary circulation
			Secondary circulation
			Tertiary circulation

Artist impressions

The project is being fast-tracked as part of the NSW Government's COVID-19 Recovery Plan. These artist impressions are early concept designs only and are subject to change.



Looking West, towards new Building Y across the southern play space



Looking South, beyond the play space towards the new Building J, with the new Building X on the left

Artist impressions

The project is being fast-tracked as part of the NSW Government's COVID-19 Recovery Plan. These artist impressions are early concept designs only and are subject to change.



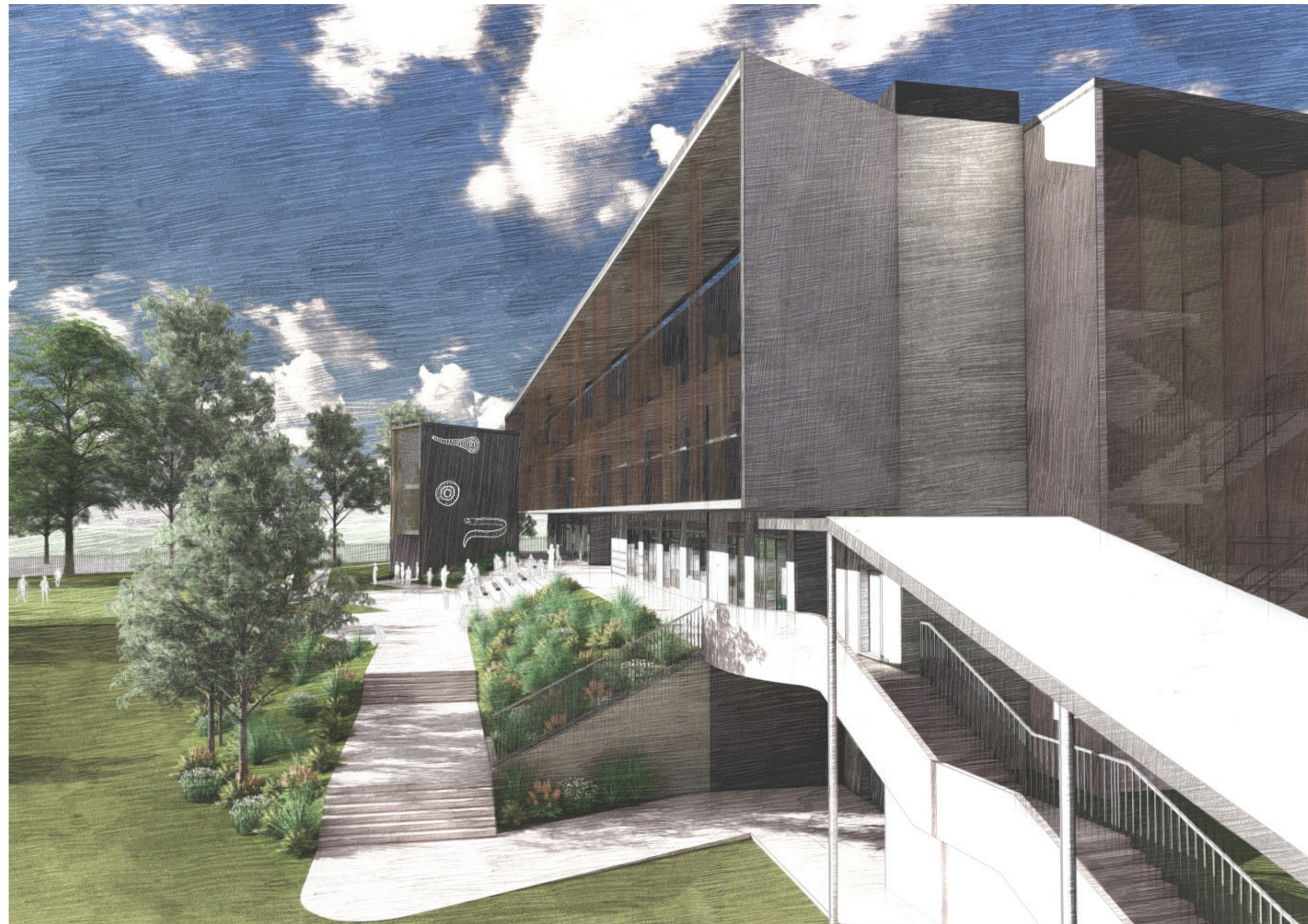
The courtyard between new Blocks J and C, looking through the new Block Y undercroft



Looking East from the Felton Road West entry towards the new Building Y

Artist impressions

The project is being fast-tracked as part of the NSW Government's COVID-19 Recovery Plan. These artist impressions are early concept designs only and are subject to change.



Looking North from Building C, to the new Building X, with the Northern play space on the left side



An artist's impression of the future aerial view of Carlingford West Public School looking towards the East from the Felton Road West boundary