

Carlingford West Public School and Cumberland High School

Summer works notification

December 2021

Investing in our schools

The NSW Government is investing \$7.9 billion over the next four years, continuing its program to deliver 215 new and upgraded schools to support communities across NSW. This is the largest investment in public education infrastructure in the history of NSW.

Planning continues for the school upgrades

Over the school holidays, a number of activities and investigations will continue across Carlingford West Public School and Cumberland High School as part of our planning for the upgrades. This work will take place from Friday 17 December until Friday 24 December 2021 and will restart on Wednesday 5 January, where it is anticipated to be completed on Wednesday 24 January 2022.

Temporary school buildings

The temporary school for Carlingford West Public School remains a key need for the school. The temporary school is located on Carlingford West Public School's southern play space and the northern section of Cumberland High School's oval. The temporary school will assist with the reallocation of classrooms during upcoming classroom refurbishment and for the future upgrade work.

As part of the summer holiday works, trucks and cranes will reposition a number of temporary buildings and equipment will be installed to prepare the buildings as new classrooms (home bases) for the new school year. The map over the page shows the location of the temporary school and where this work will occur.

Access to the school during the work

Throughout these works, vehicles accessing Cumberland High School will enter via the school gates at Dunmore Avenue. Vehicles accessing Carlingford West Public School will enter via the school gates at Felton Road East and West. Traffic control will be in place during the work to safeguard the safety of pedestrians and vehicles.

Teachers and school staff will continue to have access to the schools enter via Dunmore Avenue and Felton Road East. Access to Carlingford West Out of School Hours Centre will also continue via Felton Road West.

Investigations now underway will also continue

We will continue to conduct bore hole drilling to collect soil and other samples at various locations across the Carlingford West Public School and Cumberland High School sites. We are using a track-mounted drill rig to drill these boreholes, which is roughly as loud as a commercial lawnmower. There is also a small excavator on site to drill shallow boreholes. The work takes two to three days at each school to complete.

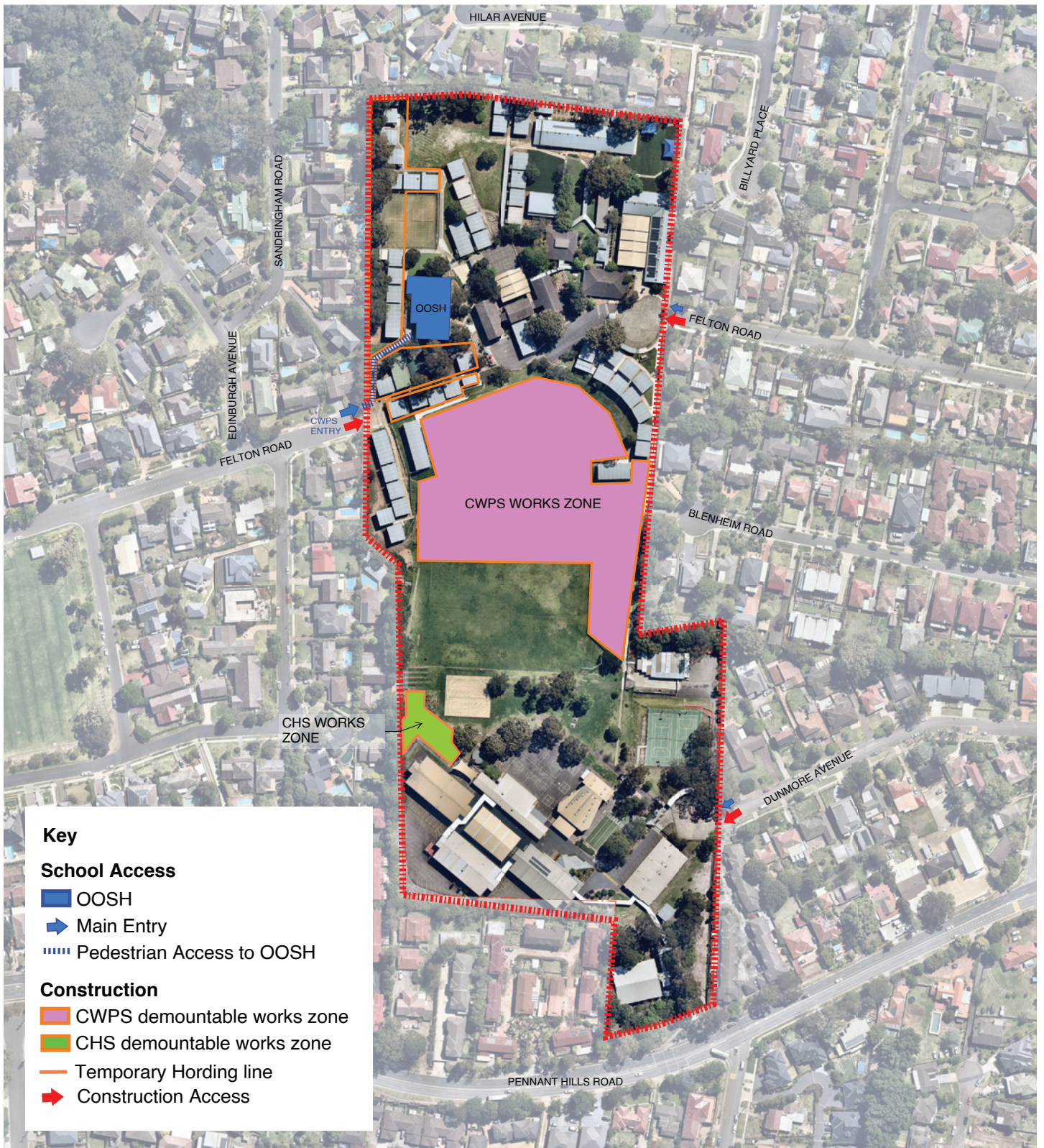
Working hours

Standard project working hours are 7 am to 5 pm, Monday to Friday and 8 am to 1 pm Saturday. No work will take place on Sundays or public holidays. Thank you for your patience as we carry out this important work

The health, safety, and well-being of the school and the local community is our highest priority, and we will continue to keep the community updated.

For more information contact:

School Infrastructure NSW
Email: schoolinfrastructure@det.nsw.edu.au
Phone: 1300 482 651
www.schoolinfrastructure.nsw.gov.au







Key

School Access

-  OOSH
-  Main Entry
-  Pedestrian Access to OOSH

Construction

-  CWPS demountable works zone
-  CHS demountable works zone
-  Temporary Hording line
-  Construction Access

For any urgent queries or concerns about construction during this period, please contact our builder via the site manager’s contact details on the main construction gate signage.

For more information contact:

School Infrastructure NSW
Email: schoolinfrastructure@det.nsw.edu.au
Phone: 1300 482 651
www.schoolinfrastructure.nsw.gov.au