



Artist impression of Carlingford West Public School



Artist impression of Cumberland High School

# Carlingford West Public School and Cumberland High School

Project update | December 2022

## Investing in our schools

The NSW Government is investing \$8.6 billion in school infrastructure over the next four years, continuing its program to deliver 160 new and upgraded schools to support communities across NSW. This builds on the more than \$9.1 billion invested in projects delivered since 2017, a program of \$17.7 billion in public education infrastructure.

The NSW Department of Education is committed to delivering new and upgraded schools for communities across NSW. The delivery of these important projects is essential to the future learning needs of our students and supports growth in the local economy.

## Project overview

The Department of Education has listened to the community's feedback and has developed a joint project to upgrade Carlingford West Public School (CWPS) and Cumberland High School (CHS).

The upgrade at Carlingford West Public School is designed to deliver new flexible learning spaces, new hall, new library, new tennis courts, new canteen, and refurbished staff and administration areas.

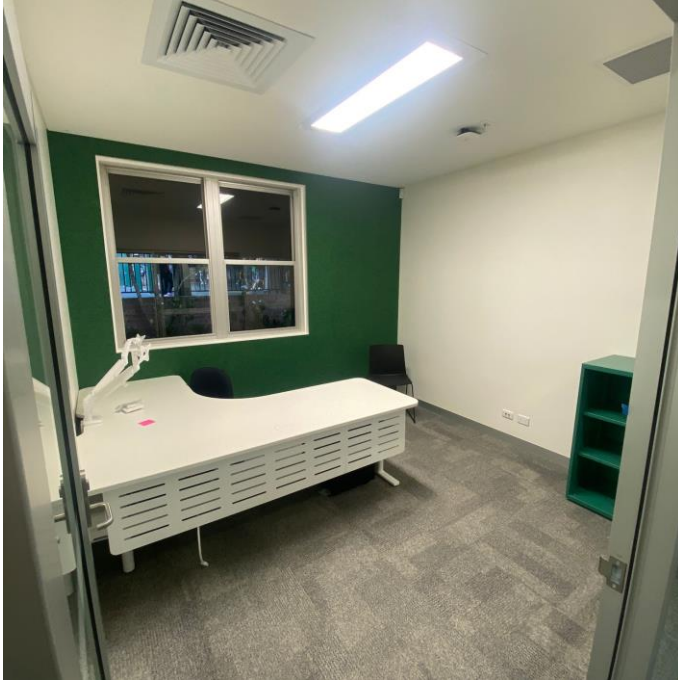
The upgrade to Cumberland High School is designed to deliver new flexible learning spaces including specialist spaces such as wood/metal workshops and visual arts spaces, new multipurpose hall, sport and performance spaces, new library, new multipurpose sports courts, new canteen, and refurbished staff and administration facilities.

## Progress summary

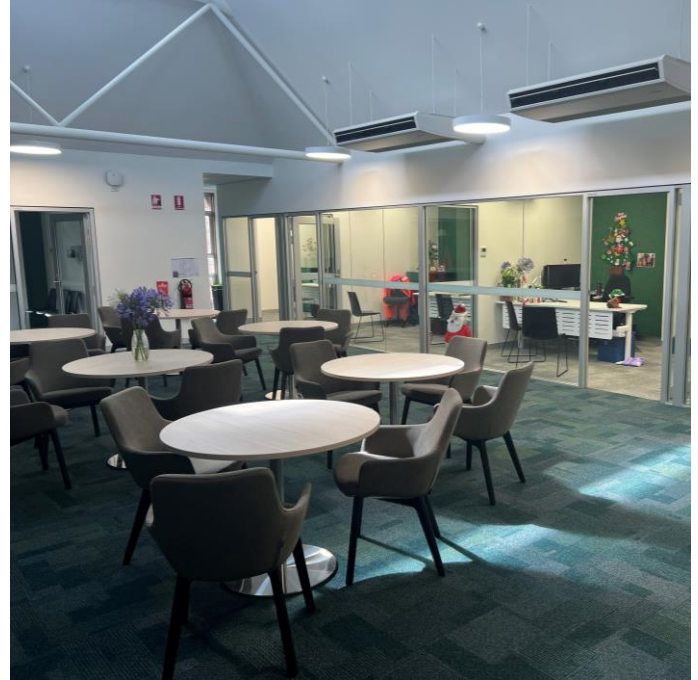
The State Significant Development (SSD) application public exhibition period closed on 5 December. The Department of Planning and Environment (DPE) will request School Infrastructure NSW provide a formal response to submissions before completing the assessment of the application. The response to submissions report will be submitted to DPE in early 2023 and published on the DPE Planning Portal.

We have released the tender for the main works contractor and expect to award this in early 2023. Once awarded the builders will work closely with the school leadership and project team to further develop the design. More information about start and completion dates will be provided when planning approval has been received and the delivery program has been finalised.

Refurbishment of CWPS Buildings A and B has been completed. These buildings will now house the school administration.



*Building A interior*



*Building B interior*

### Next steps

Over the summer holidays works will continue on the link road and sports courts. On Felton Road East bollards and line markings will be installed to make it safer for students, staff and the general public. Work will begin on the remediation and demolition of Building F shortly.

From Day 1 Term 1 2023 the one-way link road between Blenheim Road and Dunmore Avenue will be open. See map overleaf for details on traffic arrangements. Pick up and drop off hours for the school will be 8 am – 9.30 am and 2.30 pm – 4 pm Monday to Friday during school terms. At other times the road will be closed.

We look forward to continuing to share information with you as the project progresses.

If you have any queries or concerns about this project you can contact School Infrastructure NSW during business hours on 1300 482 651 or [schoolinfrastructure@det.nsw.edu.au](mailto:schoolinfrastructure@det.nsw.edu.au).

School Infrastructure NSW will be closed from 5pm Friday 23 December 2022 to 9am Monday 9 January 2023, inclusive. This is in line with the NSW Government shut down period. During this time, if there is an urgent issue, please contact the site manager listed on the construction site entry. In an emergency, please call triple zero (000).





Map of link road, operational from Term 1 2023

