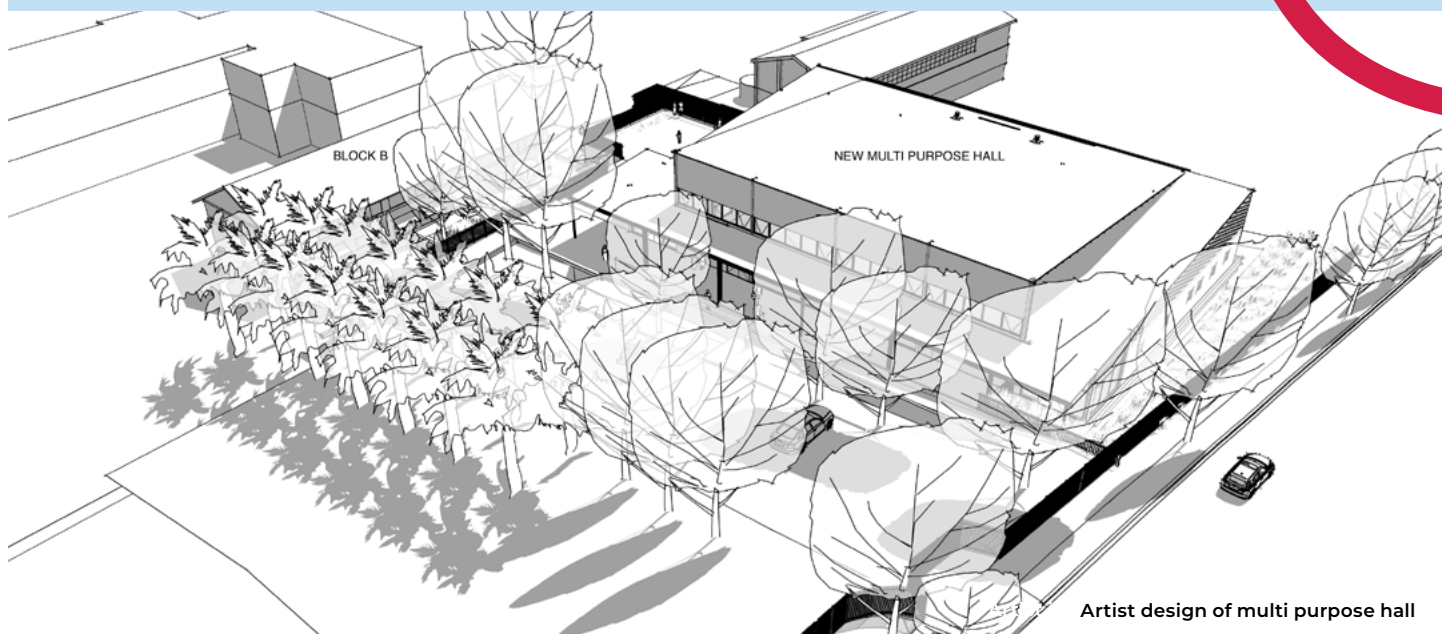


# Canterbury Boys High School New multi-purpose hall

Information pack | June 2022



Artist design of multi purpose hall

The NSW Government is investing \$7.9 billion over the next four years, continuing its program to deliver 215 new and upgraded schools to support communities across NSW. This is the largest investment in public education infrastructure in the history of NSW.

A project is underway to provide a new multi-purpose hall at Canterbury Boys High School. This will include:

## A new multi-purpose hall with:



A stage



Gymnasium



Indoor sports court



Various storage rooms



Male and female toilets, shower and change rooms

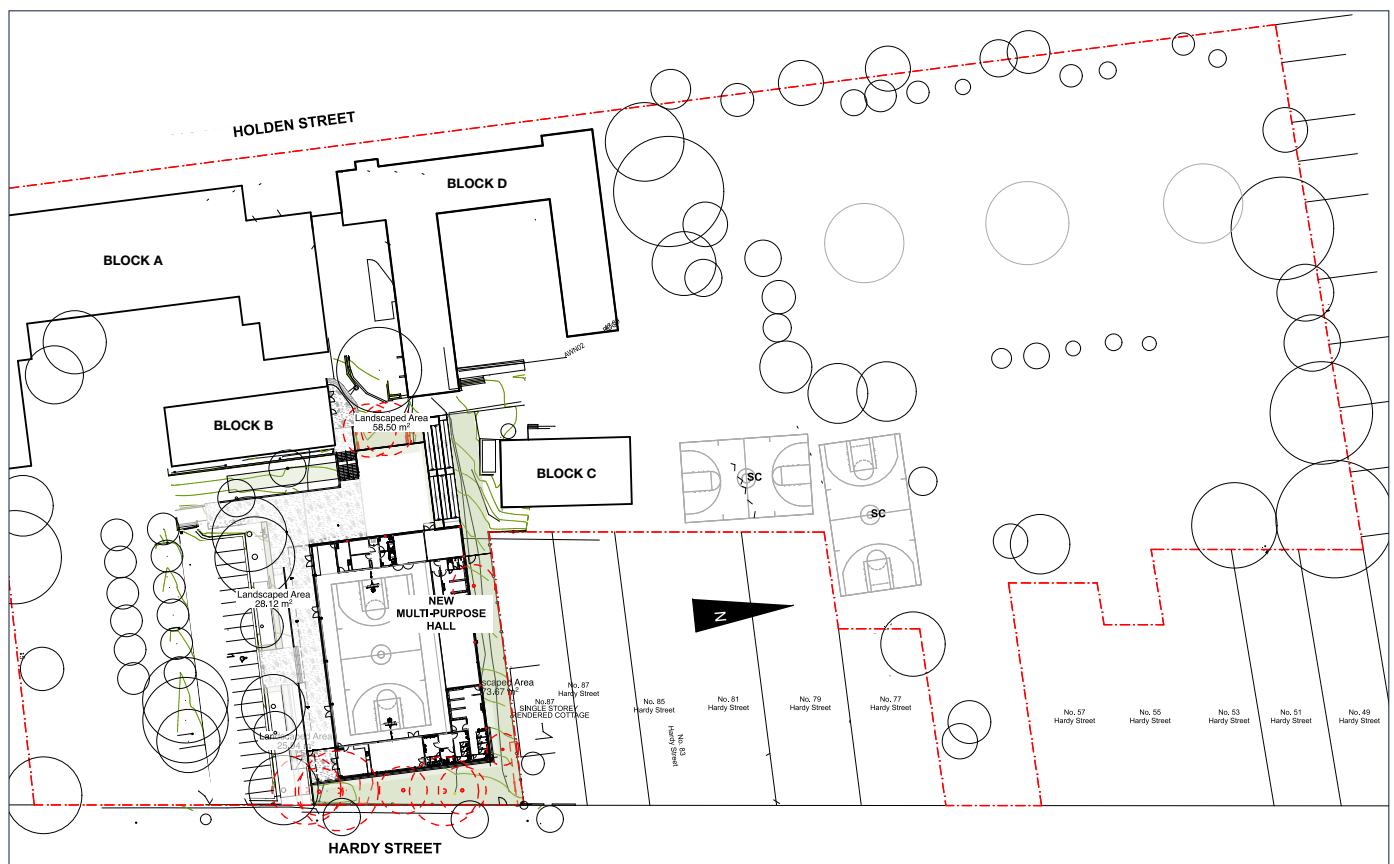


First aid room



Back of house facilities

# Proposed site plan



## Progress summary

The concept design has been completed and a Development Application has been lodged with Inner West Council. The project will be on public exhibition by Council, allowing the community and other stakeholders to comment. All submissions can be made directly to Council by post or online during the exhibition period:

Inner West Council  
PO Box 14  
Petersham NSW 2049  
[www.innerwest.nsw.gov.au](http://www.innerwest.nsw.gov.au)

The new multi-purpose hall will provide new and improved facilities for students, community groups and neighbouring schools. The concept design of the new hall has been carefully positioned within the locally heritage listed site to ensure integration is achieved with minimal impact to existing school buildings.

Cues taken from existing buildings have influenced material selection and strategies for the building, with an articulated masonry base and light sloping roof forms hovering over to contrast. The gentle roof slope design also helps transition the built form towards adjacent residential dwellings.

## Next steps

- Complete schematic design.
- Achieve planning approval.
- Award the design and construction contract.

# Frequently asked questions

## What consultation has been undertaken for the Canterbury Boys High School upgrade?

The concept design for the school upgrade was developed in consultation with the Project Reference Group (PRG), including architects, planners and design professionals in collaboration with Department of Education and Canterbury Boys High School representatives.

## When will construction start?

Pending planning approval, we expect construction will start in early 2023. We will keep you updated on timeframes as approval is given and the project progresses.

## Why are you removing trees as part of the project?

We are proposing to remove some trees on the school site to accommodate the new multi-purpose hall. We recognise the important role that trees play on the school site and we will preserve as many as possible as part of the project. We will also be planting new trees as part of the landscaping phase of the project.

## Will you be preserving heritage features of the school?

We recognise the heritage features of the school that celebrate Canterbury Boys High School's legacy and

history, and the concept design maintains the heritage characteristics of the school.

## How will the project be sustainable?

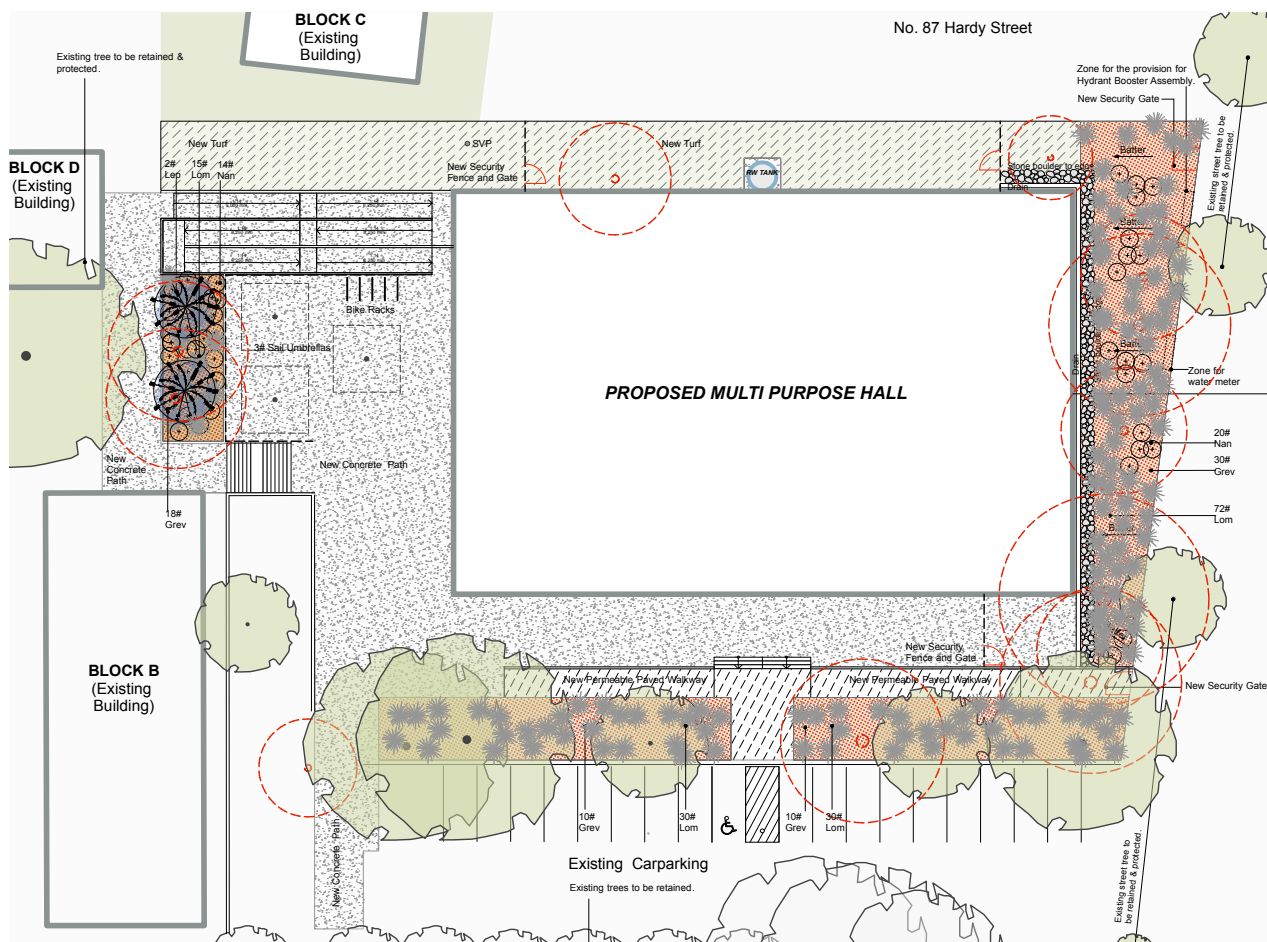
The design is governed by the Educational Facilities Standards and Guidelines (EFSG) which promotes sustainability through all phases of the construction and operating lifecycle.

## How will the school community be kept safe during construction?

The safety of the school's students, staff, visitors and the local community is our highest priority. Construction planning will be designed so there is minimal impact on school operations. Safety measures will be in place to separate the construction site from areas occupied by the school and ensure students are unable to enter construction areas. There will be regular consultation with the school to discuss construction progress.

## How can I get involved?

We are committed to working together with our school communities and other stakeholders to deliver the best possible facilities for students. Your feedback on this project is important to us. For more information, questions or to make a comment please email us at [schoolinfrastructure@det.nsw.edu.au](mailto:schoolinfrastructure@det.nsw.edu.au) or phone 1300 482 651.



Landscape concept plan



Artist impression of new multipurpose hall

## For more information

Your feedback on this project is important to us. For more information, questions or to make a comment please email us at [schoolinfrastructure@det.nsw.edu.au](mailto:schoolinfrastructure@det.nsw.edu.au) or phone 1300 482 651.

## Stay informed



### Website

Stay up to date by visiting the School Infrastructure NSW website  
[schoolinfrastructure.nsw.gov.au](https://schoolinfrastructure.nsw.gov.au)



### Email

Contact the Community Engagement team by emailing  
[schoolinfrastructure@det.nsw.edu.au](mailto:schoolinfrastructure@det.nsw.edu.au)



### Phone

Contact us between 9:00am and 5:00pm, Monday to Friday on **1300 482 651**