

# Cammeray Public School

## Planning update | November 2024

### Investing in our schools

As part of the NSW Government's plan to rebuild public education, the 2024-25 Budget is delivering record education funding, including \$8.9 billion for new and upgraded schools. This targeted investment will ensure growing communities get access to a world class public education.

### Project overview

The upgrade to Cammeray Public School will replace demountables with 4 new permanent classrooms and 2 practical activities areas in a new two-storey building. The new building will include a lift and covered walkways.

### Progress update

We have developed an initial design for the new school building in consultation with school leadership. An artist impression of the early design can be seen on the following page.

The project scope and design will continue to evolve during future design phases as feedback from government agencies, stakeholders and the community is considered. Due diligence studies at the site are continuing which will also inform the final design.

### Progress update on playground equipment and landscaping project

The P&C has funded new playground equipment for the school. Existing play equipment and surrounding landscaping will also be upgraded to create an inviting and fun area for student play. See the site plan on the last page for details.

The construction tender for this work will be released in early to mid November. Once the submissions have been reviewed and the contract awarded, we expect work to start in late 2024 or early 2025, subject to weather conditions and necessary approvals. The goal is to start work as soon as possible.

### Next steps

We will continue to work on the design for the new building. This will include consultation with school representatives to ensure classroom layouts support the specific teaching and learning requirements for Cammeray Public School.

During Term 4, an information session will be held at the school for community members to have the opportunity to learn more about the upgrade project and give feedback. More details will be shared once a date and time is confirmed.

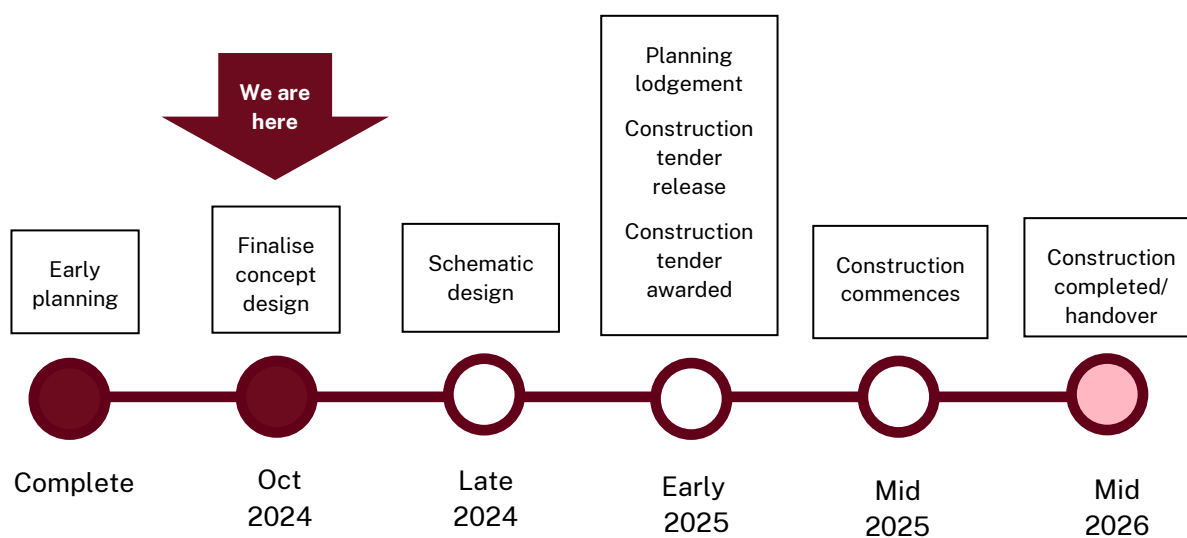


Email: [schoolinfrastructure@det.nsw.edu.au](mailto:schoolinfrastructure@det.nsw.edu.au)  
Phone: 1300 482 651  
[schoolinfrastructure.nsw.gov.au](http://schoolinfrastructure.nsw.gov.au)

## Artist impression of the new building (subject to change)



## Indicative timeline for the upgrade project



## Map of new playground



1. CUBE TOWER



2. CUBBY BUILDING



3. MULTI-SPORTS COURT



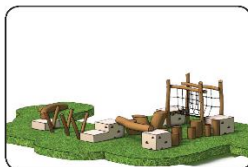
4. TIMBER DECK AROUND TREE



5. EMBANKMENT SLIDE



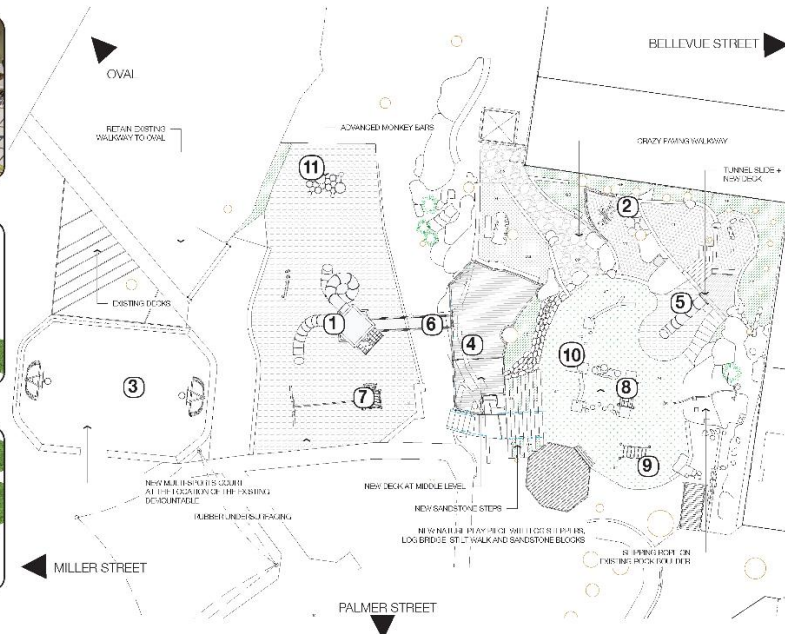
6. OVERHEAD NET TUNNEL



8. NATURE PLAY VIEW 1



10. NATURE PLAY VIEW 2



7. TRACK RIDE



9. MONKEY BARS JUNIOR



11. MONKEY BARS ADVANCED



### CAMMERAY PUBLIC SCHOOL REVISED CONCEPT/IMAGES



Scale: 1:200@A3  
Dwg no: CP04  
Job: 2208  
Date: JUNE 2024

## More information



You can find more information about the project at [edu.nsw.link/CammerayPS](https://edu.nsw.link/CammerayPS) or by scanning the QR code.

If you have any questions about this project, you can contact School Infrastructure NSW during business hours on the contact details below.