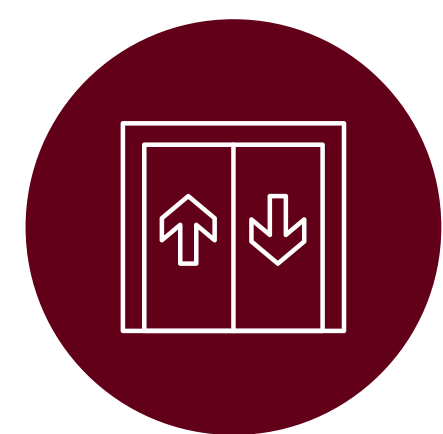


Cammeray Public School

The upgrade to Cammeray Public School will replace demountable classrooms with new permanent classrooms in a two-storey building. The upgrade will deliver:



4 permanent classrooms and 2 practical activities areas



A lift for accessibility



Covered walkways



Artist impression of new building, subject to change

Cammeray Public School

For more information

Phone: 1300 482 651

Email: schoolinfrastructure@det.nsw.edu.au

Website: schoolinfrastructure.nsw.gov.au



Project timeline



More information

You can find more information about the project at edu.nsw.link/CammerayPS or by scanning the QR code.

If you have any questions about the project, you can contact School Infrastructure NSW during business hours on the contact details below.

Cammeray Public School

For more information

Phone: 1300 482 651

Email: schoolinfrastructure@det.nsw.edu.au

Website: schoolinfrastructure.nsw.gov.au



Artist impressions



Cammeray Public School

For more information

Phone: 1300 482 651

Email: schoolinfrastructure@det.nsw.edu.au

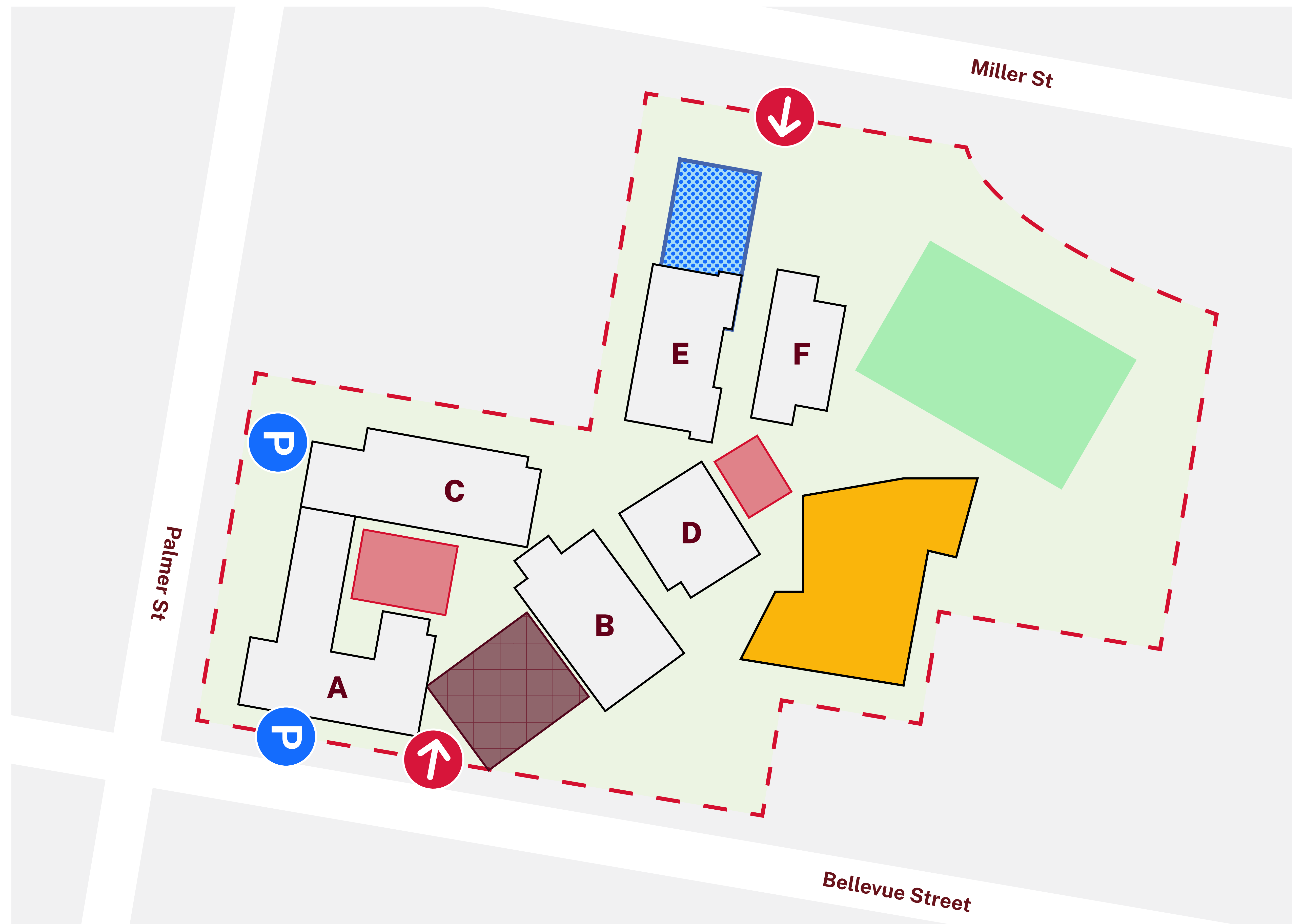
Website: schoolinfrastructure.nsw.gov.au



Location of new building

Legend

- Existing buildings
- New playground
- New building
- Covered outdoor learning area (COLA)
- Shade structure
- Sports court
- Parking
- School boundary
- Entry



Cammeray Public School

For more information
Phone: 1300 482 651
Email: schoolinfrastructure@det.nsw.edu.au
Website: schoolinfrastructure.nsw.gov.au



Examples of classrooms being delivered in NSW



Examples of new modern public school classrooms

Cammeray Public School

For more information
Phone: 1300 482 651
Email: schoolinfrastructure@det.nsw.edu.au
Website: schoolinfrastructure.nsw.gov.au



How we build schools

When designing new schools or school upgrades, we are guided by the NSW Education Facilities Standards and Guidelines (EFSG). The EFSG are based on years of educational research and engineering expertise.

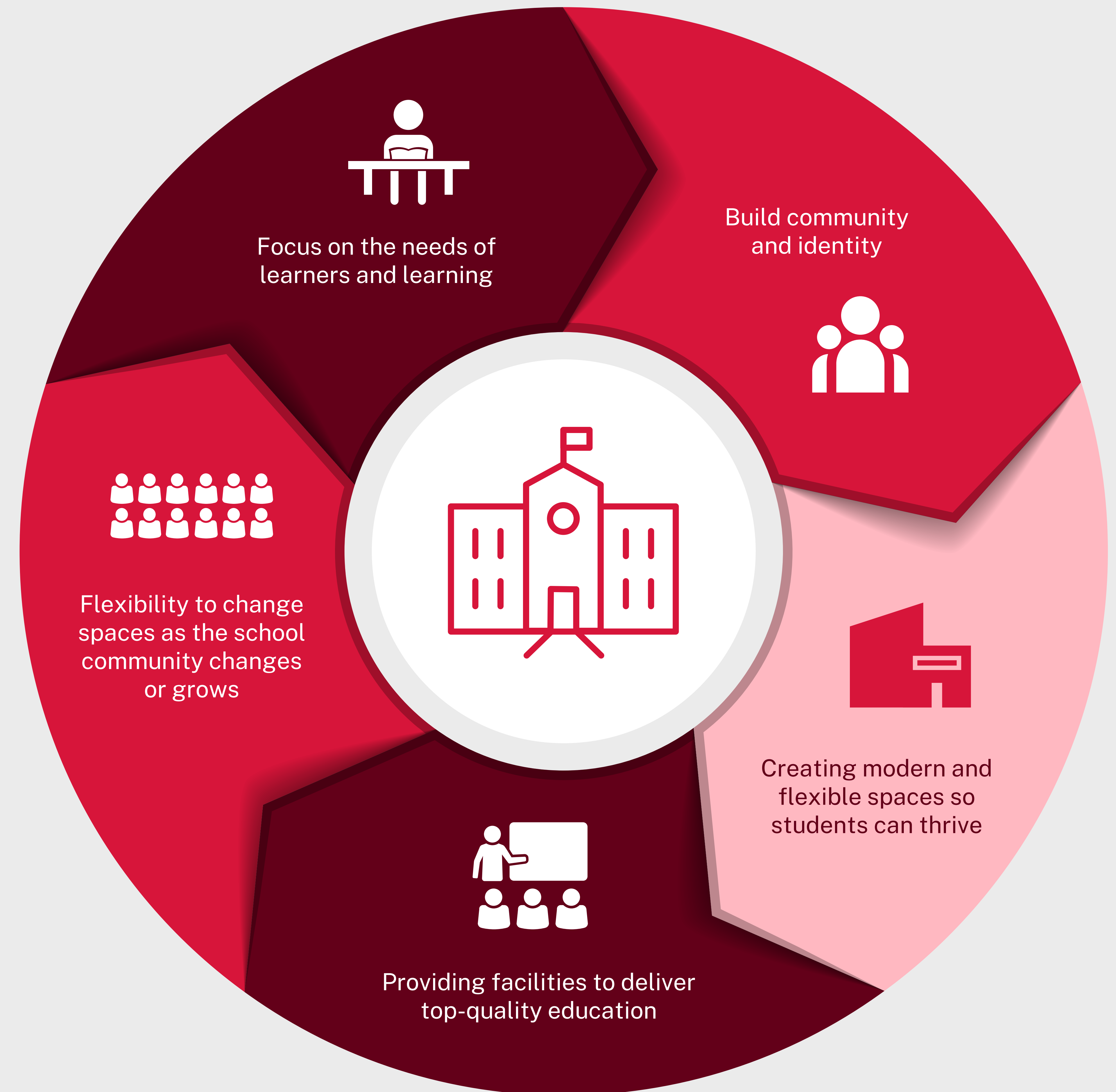
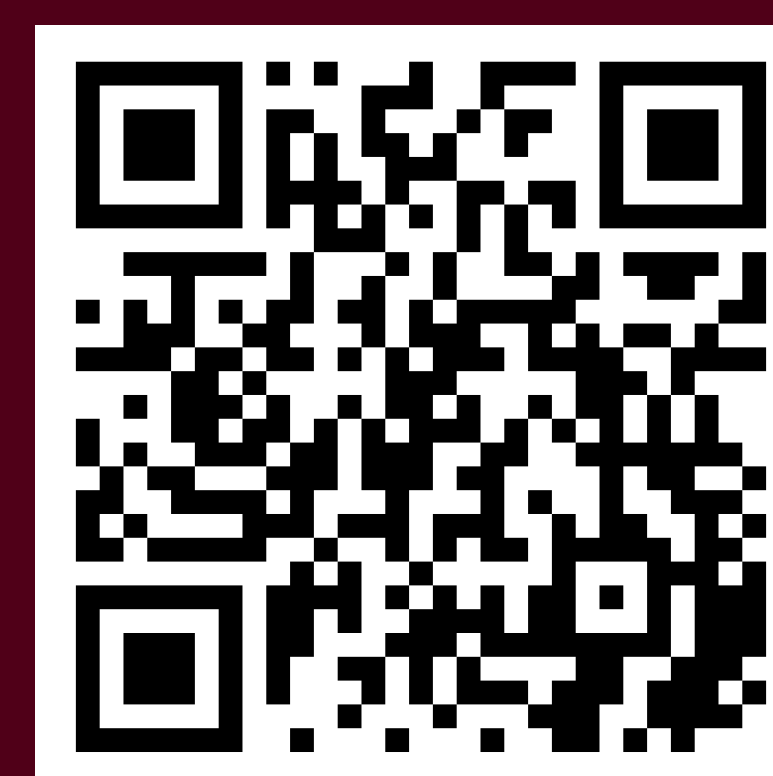
They have been developed to ensure we design and deliver the very best learning environments that support our teachers and meet the learning needs of all our students now and into the future.

These guidelines are essential in delivering more uniform, school designs and quality learning environments that:

- are safe, functional, and adaptable
- meet the learning needs of all our students
- support those with disabilities
- are fit for purpose to deliver the curriculum
- meet and comply with all NSW legal and policy requirements
- use resources sustainably to minimise their impact on the local environment
- deliver value for money and reduce long term maintenance costs.

Learn more

Take a look at some of the upgrades we have delivered and see how these varied spaces support teaching and learning. Visit edu.nsw.link/SchoolShowcase or scan the QR code



Cammeray Public School

For more information
Phone: 1300 482 651
Email: schoolinfrastructure@det.nsw.edu.au
Website: schoolinfrastructure.nsw.gov.au

