

An example of a recently completed learning space at another SSP

Budawang School for Specific Purposes (SSP) Relocation

Planning update

February 2021

Investing in our schools

The NSW Government is investing \$7 billion over the next four years, continuing its program to deliver more than 200 new and upgraded schools to support communities across NSW. This is the largest investment in public education infrastructure in the history of NSW.

The NSW Department of Education is committed to delivering new and upgraded schools for communities across NSW. The delivery of these important projects is essential to the future learning needs of our students and supports growth in the local economy.

Project overview

Planning is continuing on a project to relocate the existing Budawang SSP in Ulladulla NSW to the recently acquired site in Milton NSW.

The project will deliver additional purpose built learning spaces and a hydrotherapy aquatic facility to cater to students with moderate (IO) or severe intellectual disabilities (IS) from years K-12.

There will be seven new learning spaces to accommodate student growth and new core facilities.

Project summary

In December 2020, School Infrastructure NSW (SINSW) engaged with the local community to share feedback on the project.

Participants were asked to answer a series of questions through an online survey that relate to planning a school project.

Thank you to those who completed the survey. We received 77 submissions from the local community.

Please see overleaf for a summary of what you told us.

Next steps

- Submission of the State Signification Development Application.
- Award the construction contract.
- Further consultation with local community groups in parallel with design finalisation.

Keep in touch

The SINSW website will continue to have up-to-date information about this project. You can also continue to contact us via our community information line and email on the details below.

For more information contact:

School Infrastructure NSW
Email: schoolinfrastructure@det.nsw.edu.au
Phone: 1300 482 651
www.schoolinfrastructure.nsw.gov.au

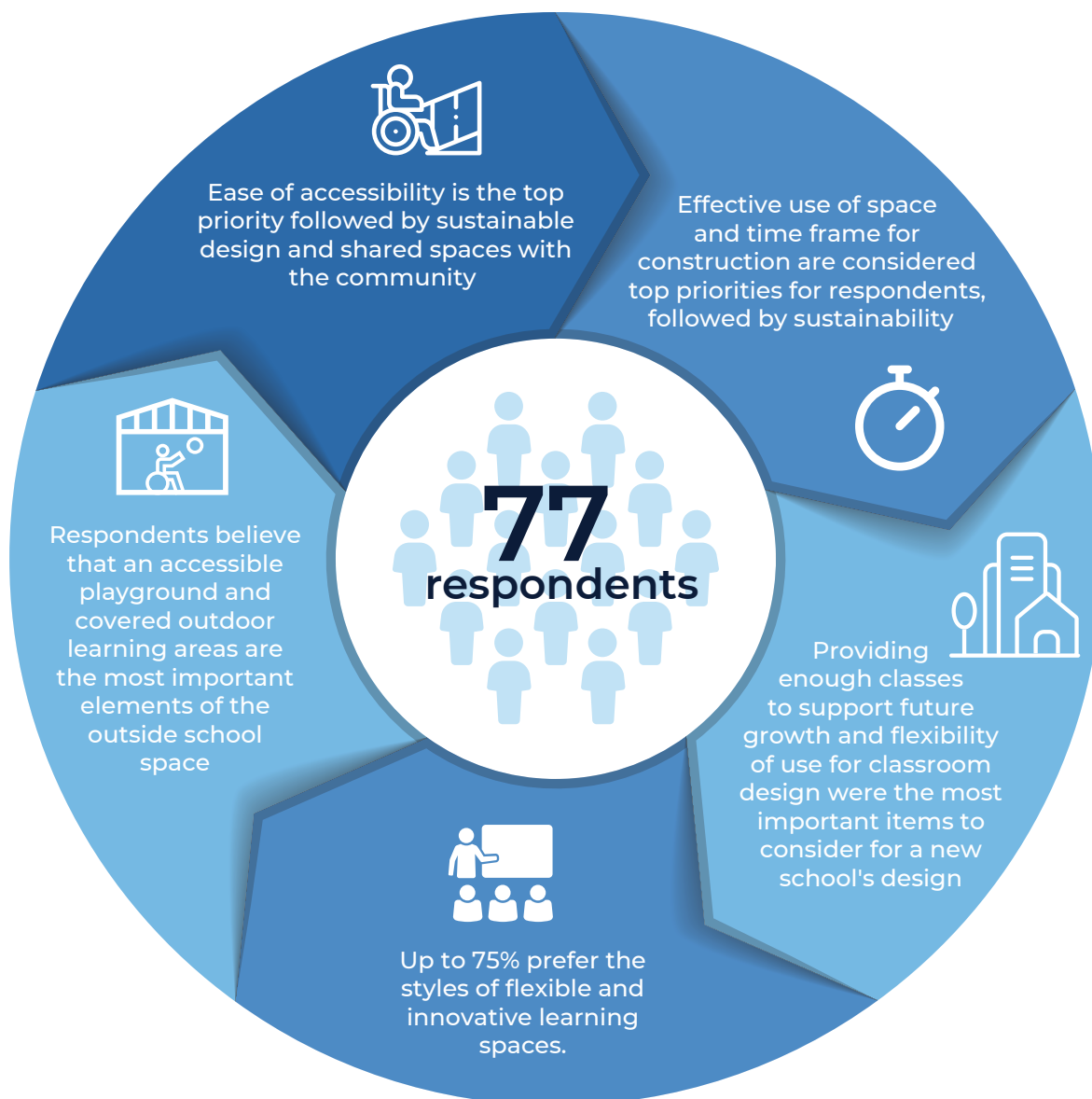
Here is what you told us in January

"It will encourage people with students with moderate and severe disabilities to move to this district."

"The country side location will be beneficial to enrolled children and teachers. The chance for updated equipment, access to hydrotherapy, it's just a better location."

"Currently the Shoalhaven area has a shortage of space in SSP's. This leads to more pressure on our mainstream schools with children having to go to schools that are not suited to their level of need."

"I think the new school is essential for our community and has the potential to demonstrate best practice in terms of supporting young people with a disability."



90% of respondents feel positively about how the school will contribute to the local community.

For more information contact:

School Infrastructure NSW
Email: schoolinfrastructure@det.nsw.edu.au
Phone: 1300 482 651
www.schoolinfrastructure.nsw.gov.au

