



Artist impression of the courtyard at the new Budawang school

Budawang School relocation

Project update

November 2021

Investing in our schools

The NSW Government is investing \$7.9 billion over the next four years, continuing its program to deliver 215 new and upgraded schools to support communities across NSW. This is the largest investment in public education infrastructure in the history of NSW.

The NSW Department of Education is committed to delivering new and upgraded schools for communities across NSW. The delivery of these important projects is essential to the future learning needs of our students and supports growth in the local economy.

Project overview

Planning is continuing on a project to relocate the existing Budawang School for Specific Purposes (SSP) in Ulladulla to a new facility in Milton.

The project will deliver additional purpose-built learning spaces and a hydrotherapy aquatic facility to cater to students with disability from years K-12.

There will be seven new learning spaces to accommodate student growth and new core facilities.

Progress Summary

The State Significant Development (SSD) application has been approved by the NSW Department of Planning, Industry and Environment (DPIE). The construction contract has been awarded to Zauner Construction.

Construction

Site establishment works to prepare the site for construction are likely to start in the coming months. The community will be notified of the planned works in advance. Construction works have been approved to occur between 7:00am and 6:00pm, Monday to Friday and 8:00am to 1:00pm, Saturday. No work will take place on Sundays unless otherwise advised.

For more information contact:

School Infrastructure NSW
Email: schoolinfrastructure@det.nsw.edu.au
Phone: 1300 482 651
www.schoolinfrastructure.nsw.gov.au

Managing construction impacts

Works are anticipated to start in the coming months, starting with site establishment and followed by earthworks and construction of the new learning facilities.

As part of the consent to carry out the work, the main contractor, Zauner Construction, is required to develop a Construction Environmental Management Plan (CEMP) to outline how it will manage construction impacts to nearby residents. These impacts include noise, vibration and vehicle movements.

You can view the consent conditions, including those required for managing construction impacts on the Planning Portal webpage at www.planningportal.nsw.gov.au/major-projects/project/39516.

You can also take a look at the construction impacts consent conditions and proposed action below.

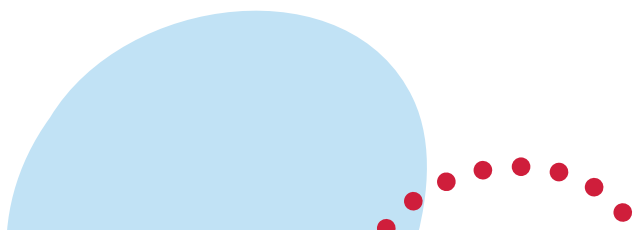
Consent conditions and proposed action

Below are some key consent conditions from DPIE for the Budawang School relocation project. Please let us know if you have any feedback or questions about these consent conditions and the associated management actions listed.

| Activity | Consent conditions and proposed action |
|--------------|--|
| General | <ul style="list-style-type: none"> ▪ Noise levels generated by the operations at site shall not exceed the noise control guidelines outlined in the EPA Environmental Noise Control Manual for construction/demolition works. ▪ The local community will be provided with advance notice of work, particularly outlining any anticipated high-noise works. ▪ Trucks will be maintained with low-noise mufflers and only use approved truck routes to and from the site. ▪ Construction works, including the delivery of materials to and from the site, are proposed to take place between 7:00am and 6:00pm Mondays to Fridays and between 8:00am and 1:00pm on Saturdays. No work is currently proposed for Sundays or Public Holidays. |
| Construction | <p>Consent condition: Construction hours</p> <p>Proposed actions:</p> <ul style="list-style-type: none"> ▪ Overall construction hours will be strictly limited to approved hours: 7:00am to 6:00pm, Monday to Friday; 8:00am to 1:00pm Saturdays. ▪ If rock breaking activities are required, impacts will be managed through equipment selection, and respite periods. Rock breaking hours will be strictly limited to approved hours: 9:00am to 12:00pm, Monday to Friday; 2:00pm to 5:00pm Monday to Friday; 9:00am to 12:00pm, Saturday. |
| Construction | <p>Consent condition: Noise and Vibration</p> <p>Proposed actions</p> <ul style="list-style-type: none"> ▪ A Construction Noise and Vibration Management Sub-Plan (CNVMP) will be prepared by a suitably qualified and experienced noise expert. ▪ The CNVMP will include a vibration assessment for the adjacent heritage listed bakery at 197-201 Princess Highway Milton. ▪ Plant and equipment will be set up/orientated to direct noise away from the closest receivers/residents. ▪ The quietest suitable machinery will be selected to perform works. ▪ In close proximity to sensitive receivers/residents, machines will not be used/run simultaneously. ▪ If rock breaking activities are required, impacts will be managed through equipment selection, and respite periods. |

For more information contact:

School Infrastructure NSW
 Email: schoolinfrastructure@det.nsw.edu.au
 Phone: 1300 482 651
www.schoolinfrastructure.nsw.gov.au



| Activity | Consent conditions and proposed action |
|--------------|--|
| Construction | <p data-bbox="316 230 951 264">Consent condition: Soil and Water Management</p> <p data-bbox="316 277 523 311">Proposed actions</p> <ul data-bbox="316 331 1471 539" style="list-style-type: none"><li data-bbox="316 331 1471 398">▪ A Construction Soil and Water Management Sub-Plan (CSWMSP) will be prepared by a suitably qualified expert, in consultation with Council.<li data-bbox="316 405 1471 472">▪ Sediment and Erosion Management Plans are to be enforced prior to any works commencing on site.<li data-bbox="316 479 1471 539">▪ A Flood Study has been completed and an on-site detention tank is to be installed as part of the works. |
| Construction | <p data-bbox="316 560 1046 593">Consent condition: Traffic and Pedestrian Management</p> <p data-bbox="316 607 523 640">Proposed actions</p> <ul data-bbox="316 651 1471 786" style="list-style-type: none"><li data-bbox="316 651 1471 719">▪ A Construction Traffic and Pedestrian Management Sub-Plan (CTPMSP) will be prepared by a suitably qualified expert to ensure road and pedestrian safety.<li data-bbox="316 725 1471 786">▪ Traffic control personnel will be on-site on an as need basis to ensure minimal interruption to traffic and pedestrians. |

For more information contact:

School Infrastructure NSW
Email: schoolinfrastructure@det.nsw.edu.au
Phone: 1300 482 651
www.schoolinfrastructure.nsw.gov.au

