



An example of a recently upgraded High School learning space

Bomaderry High School

Project update

February 2022

Investing in our schools

The NSW Government is investing \$7.9 billion over the next four years, continuing its program to deliver 215 new and upgraded schools to support communities across NSW. This is the largest investment in public education infrastructure in the history of NSW.

The NSW Department of Education is committed to delivering new and upgraded schools for communities across NSW. The delivery of these important projects is essential to the future learning needs of our students and supports growth in the local economy.

Bomaderry High School upgrade

Early planning has begun to upgrade Bomaderry High School. This upgrade will include fit-for-purpose learning spaces and core facilities. At this stage of the project, site investigations and needs analysis is underway. This phase involves consideration and studies of demographic trends, education requirements, catchment boundaries, heritage requirements, transport links and possible shared area opportunities.

In the next phase of the project, consultants such as architects and Project Managers are appointed and an investigation and review of the site takes place, along with development of the Master Plan options. Doing so means that we consider the needs of the local area now and into the future, and ensure the right school is designed for the community. Once a preferred option is identified, approvals are needed in order to progress to delivery of the project.

Progress summary

Consultants such as the land surveyor, traffic consultant and heritage consultants will soon be on board. As well, key consultants such as Project Manager, Cost Manager and the Architect will be appointed by the end of February 2022.

Site investigations will begin early this year, with Master Planning and Final Business Case submission due to be completed by mid-2022.

For more information contact:

School Infrastructure NSW
Email: schoolinfrastructure@det.nsw.edu.au
Phone: 1300 482 651
www.schoolinfrastructure.nsw.gov.au

How can I get involved?

We are committed to working together with our school communities and stakeholders to deliver the best learning facilities for students. As the project progresses we will share details with the community for feedback.

A dedicated project page has been published on the School Infrastructure NSW website, which is updated as the project progresses. You can also contact us via our community information line and email on the details below.

The information below takes you through the journey of upgrading or building a new school

Early planning

- Consideration and studies of demographic trends, education requirements, the condition of the existing school buildings, catchment boundaries, heritage requirements, transport links and partnership opportunities.
- Doing so means that we:
 - consider the needs of the local area now and into the future.
 - ensure the right school is designed for the community.
- An important step before an architect or other contractors are appointed and official community engagement commences.

Planning

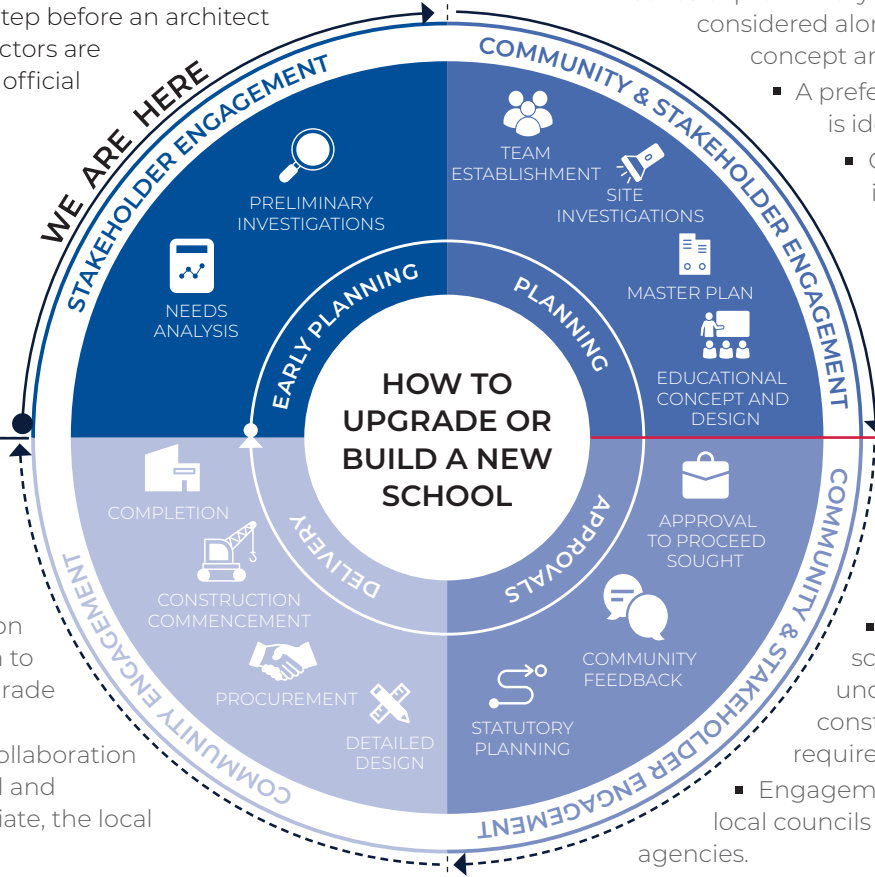
- Consultants such as architects and project managers are appointed.
- Investigation and review of site and development of master plan options.
- Master planning considers options for the general size, shape and form of buildings for a specific school site.
- A Project Reference Group (PRG) is established.
- Operational, educational and service delivery factors are understood and considered by the PRG.
 - A series of preliminary master plan options are considered along with the educational concept and design for the school.
 - A preferred concept design option is identified.
 - Once a preferred option is identified approval is needed in order to progress from planning through to project delivery.

Delivery

- The construction works program to deliver the upgrade to the school is developed in collaboration with the school and where appropriate, the local community.
- Ongoing consultation with Principal, staff and other school users.
- Throughout detailed design and construction updates are provided to the local community.

Approvals

- Workshops continue with school and local community to understand challenges and constraints and identify future requirements.
 - Engagement of technical specialists, local councils and other government agencies.
 - Statutory planning approval process.
 - Opportunity for local community to view and provide feedback upon submission of the Development Application.
 - Scope of work and concept design is further defined.



For more information contact:

School Infrastructure NSW
 Email: schoolinfrastructure@det.nsw.edu.au
 Phone: 1300 482 651
www.schoolinfrastructure.nsw.gov.au

