



Artist impression of the proposed new Bletchington Public School learning hub

Bletchington Public School upgrade

Project update

November 2020

Investing in our schools

The NSW Government is investing \$6.7 billion over four years to deliver more than 190 new and upgraded schools to support communities across NSW. In addition, a record \$1.3 billion is being spent on school maintenance over five years. This is the largest investment in public education infrastructure in the history of NSW.

The NSW Department of Education is committed to delivering new and upgraded schools for communities across NSW. The delivery of these important projects is essential to the future learning needs of our students and supports growth in the local economy.

Overview

A project is underway to upgrade Bletchington Public School to bring students the latest educational facilities and support the local community. The project has been approved to proceed to the delivery phase and subject to development consent will deliver:

- a new two-storey learning hub including 10 new flexible learning spaces (classrooms)
- a hall upgrade
- a new ICT special programs unit
- refurbishment of existing learning spaces including support classes and withdrawal areas
- replacement of the Covered Outdoor Learning Area (COLA) and upgraded connecting walkways
- removal of demountables.

Progress summary

A Project Reference Group (PRG) was established in August 2019 including architects, planners and design professionals, and Department of Education, Bletchington Public School, and P&C leadership representatives.

A preferred design to meet Bletchington Public School's educational and operational requirements has been developed in consultation with the PRG.

The proposed designs can be viewed online at schoolinfrastructure.nsw.gov.au.

Next steps

- Seeking development consent through a Complying Development Certificate (CDC).
- Tendering for the construction contract.
- Developing the detailed design.

What is a Complying Development Certificate (CDC)?

Complying development applications are determined by council or an independent certifier and must satisfy prescribed planning approval conditions and environmental requirements.

Bletchington Public School upgrade

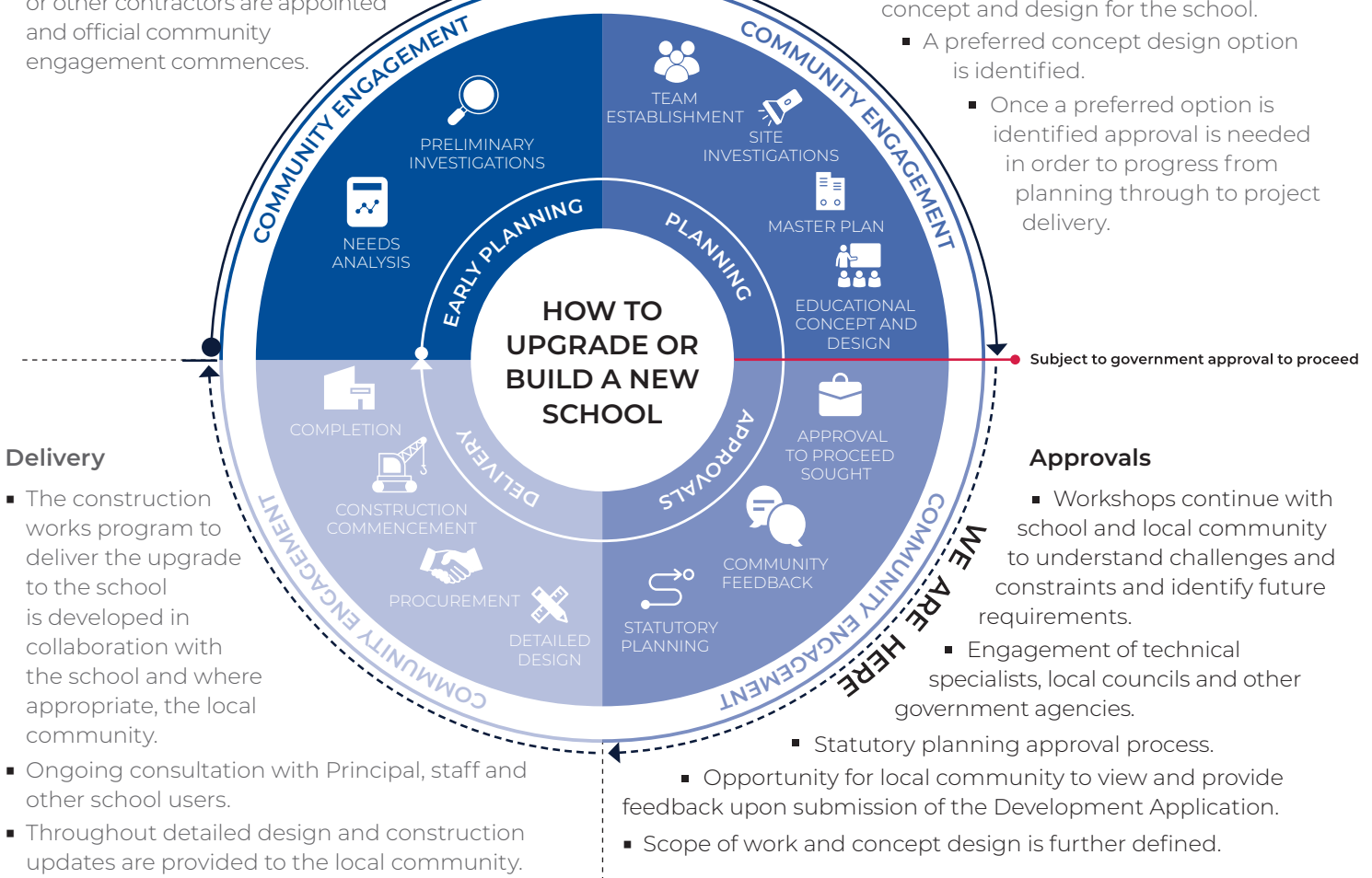
The information below takes you through the journey of upgrading a school.

Early planning

- Consideration and studies of demographic trends, education requirements, the condition of the existing school buildings, catchment boundaries, heritage requirements, transport links and partnership opportunities.
- Doing so means that we:
 - consider the needs of the local area now and into the future.
 - ensure the right school is designed for the community.
- An important step before an architect or other contractors are appointed and official community engagement commences.

Planning

- Consultants such as architects and project managers are appointed.
- Investigation and review of site and development of master plan options.
- Master planning considers options for the general size, shape and form of buildings for a specific school site.
- A Project Reference Group (PRG) is established.
- Operational, educational and service delivery factors are understood and considered by the PRG.
 - A series of preliminary master plan options are considered along with the educational concept and design for the school.
 - A preferred concept design option is identified.
 - Once a preferred option is identified approval is needed in order to progress from planning through to project delivery.



Delivery

- The construction works program to deliver the upgrade to the school is developed in collaboration with the school and where appropriate, the local community.
- Ongoing consultation with Principal, staff and other school users.
- Throughout detailed design and construction updates are provided to the local community.

Approvals

- Workshops continue with school and local community to understand challenges and constraints and identify future requirements.
- Engagement of technical specialists, local councils and other government agencies.
 - Statutory planning approval process.
 - Opportunity for local community to view and provide feedback upon submission of the Development Application.
 - Scope of work and concept design is further defined.

How can I get involved?

We are committed to working together with our school communities and other stakeholders to deliver the best possible learning facilities for students.

Your feedback on this project is important to us. For more information, questions or to make a comment please contact:

School Infrastructure NSW

Email: schoolinfrastructure@det.nsw.edu.au

Phone: 1300 482 651

www.schoolinfrastructure.nsw.gov.au