

Project overview

Blakebrook Public School suffered extensive damage during the 2022 flood events with flood water entering the school and damaging classrooms, the administration area, library, playgrounds, gardens and toilets.

The Department of Education has committed to rebuild the school and deliver core facilities including classrooms, new administration facilities, library, underneath play areas and toilets on the first and ground levels.



New permanent classrooms



New library



New play space



New administration area



New school entry



New canteen



Artist impression of the new Blakebrook Public School (subject to change)

Blakebrook Public School

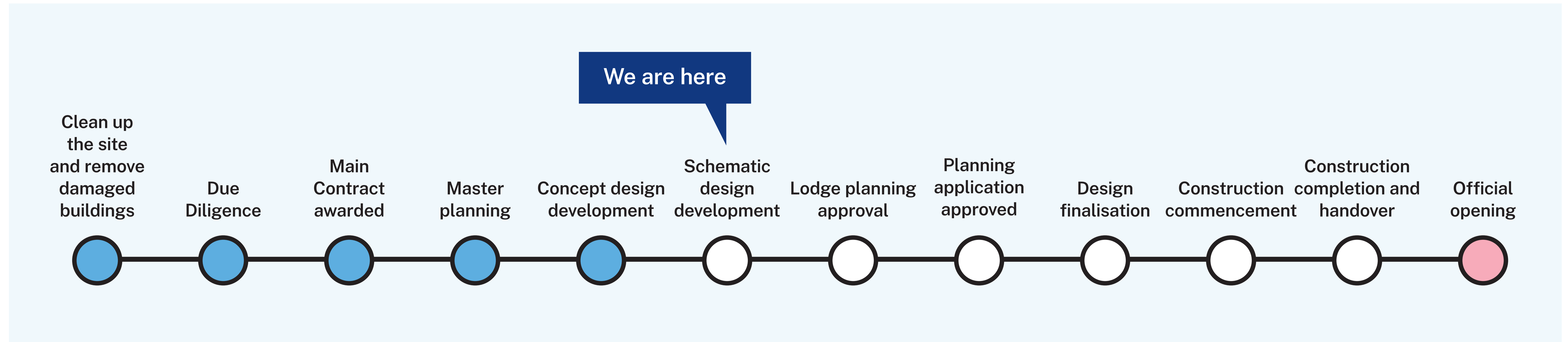
For more information phone: 1300 482 651
Email: schoolinfrastructure@det.nsw.edu.au
schoolinfrastructure.nsw.gov.au



We would like to acknowledge the Bundjalung people as the traditional custodians of this land and also pay our respects to elders both past and present.



Project timeline



What's next?

Concept, schematic plans and colour schemes will be finalised in October. Then a planning application for the build will be lodged with Lismore Council.

The building contractor will work with School Infrastructure NSW to determine a timeline for the demolition, building and any staging requirements.

We look forward to sharing more information with you as the project progresses. You can stay informed by regularly visiting the project web page and you can contact us via email or phone if you have any questions or feedback about the Blakebrook Public School Flood Recovery Project.

Blakebrook Public School

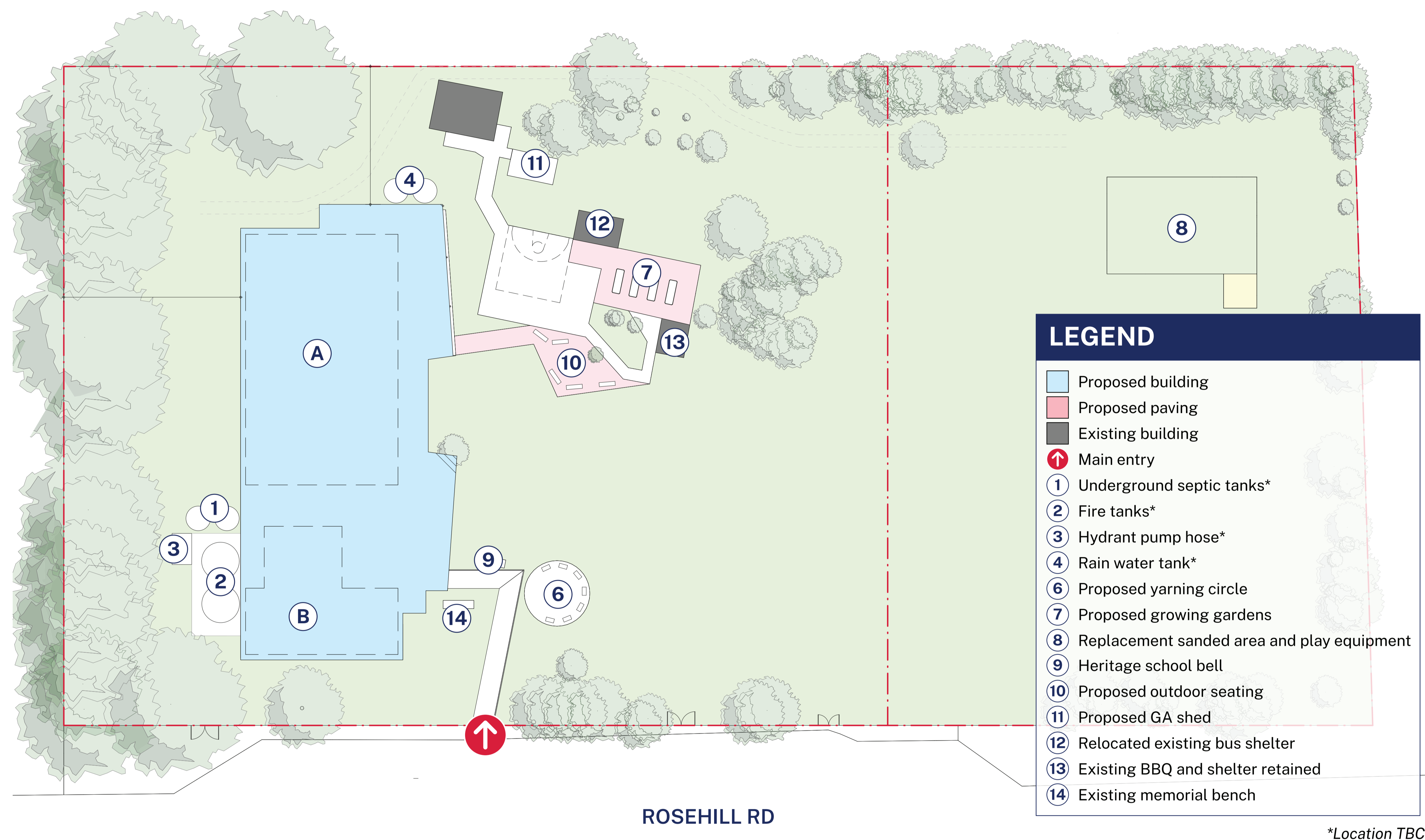
For more information phone: 1300 482 651
Email: schoolinfrastructure@det.nsw.edu.au
schoolinfrastructure.nsw.gov.au

We would like to acknowledge the Bundjalung people as the traditional custodians of this land and also pay our respects to elders both past and present.

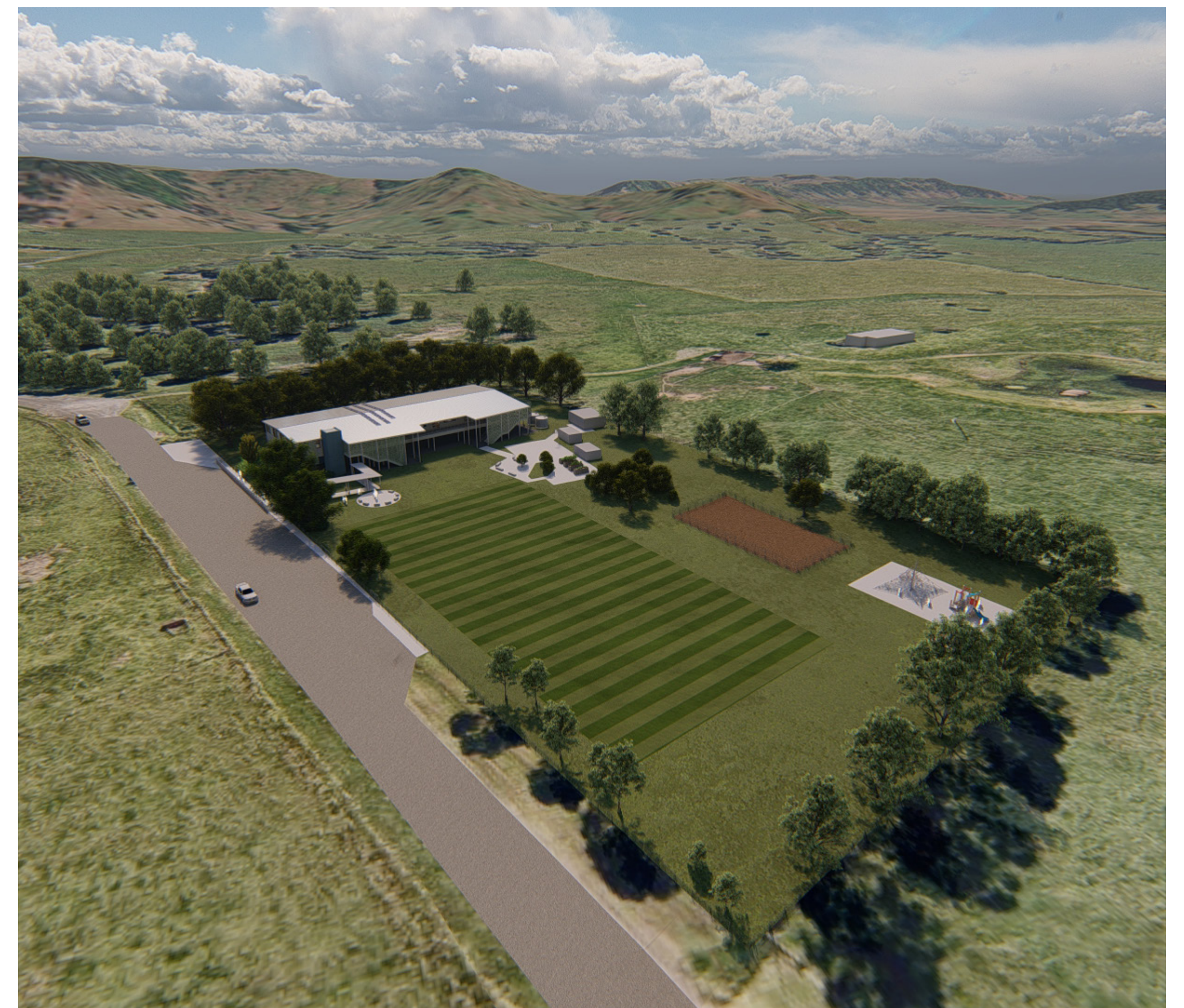


Blakebrook masterplan and aerial view

The layout of the new school maximises the play space and sits carefully amongst the trees and landscape capturing beautiful views and taking advantage of the solar aspect and the breeze.



Master plan of the new Blakebrook Public School (subject to change)



Aerial artist impression of the new Blakebrook Public School (subject to change)

Blakebrook Public School

For more information phone: 1300 482 651
Email: schoolinfrastructure@det.nsw.edu.au
schoolinfrastructure.nsw.gov.au

We would like to acknowledge the Bundjalung people as the traditional custodians of this land and also pay our respects to elders both past and present.

Blakebrook Public School Flood Resilient Design

The façade of the new Blakebrook Public School has been designed to be respectful of the local environment, visually appealing while embedding the colours of country and community into the materials and finishes.

The school is being built above the flood requirements to minimise the impact from any future floods.

The area under the building (undercroft) will be used as an outdoor play area and classroom.

The images here are artist's impressions only. Final colour and landscaping is subject to change through final design stages and landscaping.

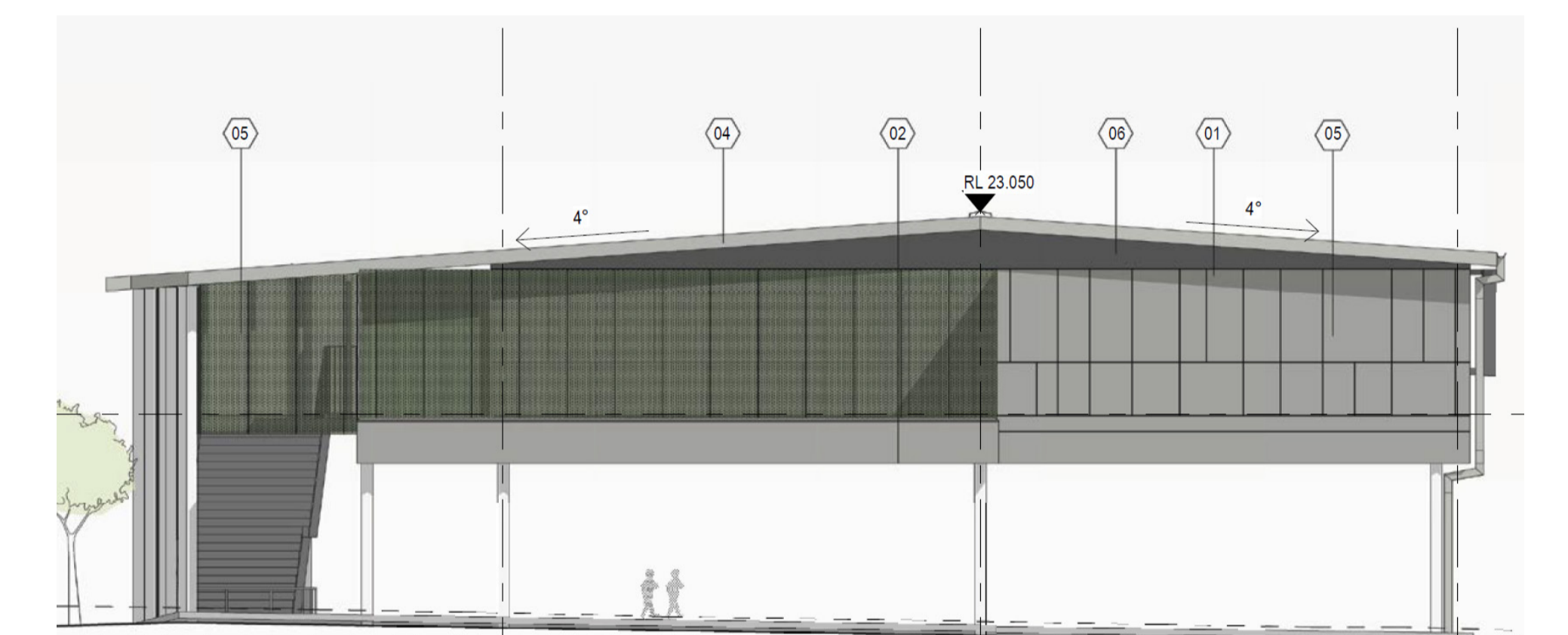


Artist impression entry perspective (subject to change)

EAST ELEVATION



WEST ELEVATION



Artist impression of the undercroft (subject to change)

Blakebrook Public School

For more information phone: 1300 482 651
Email: schoolinfrastructure@det.nsw.edu.au
schoolinfrastructure.nsw.gov.au



We would like to acknowledge the Bundjalung people as the traditional custodians of this land and also pay our respects to elders both past and present.



Blakebrook Public School undercroft floor plan

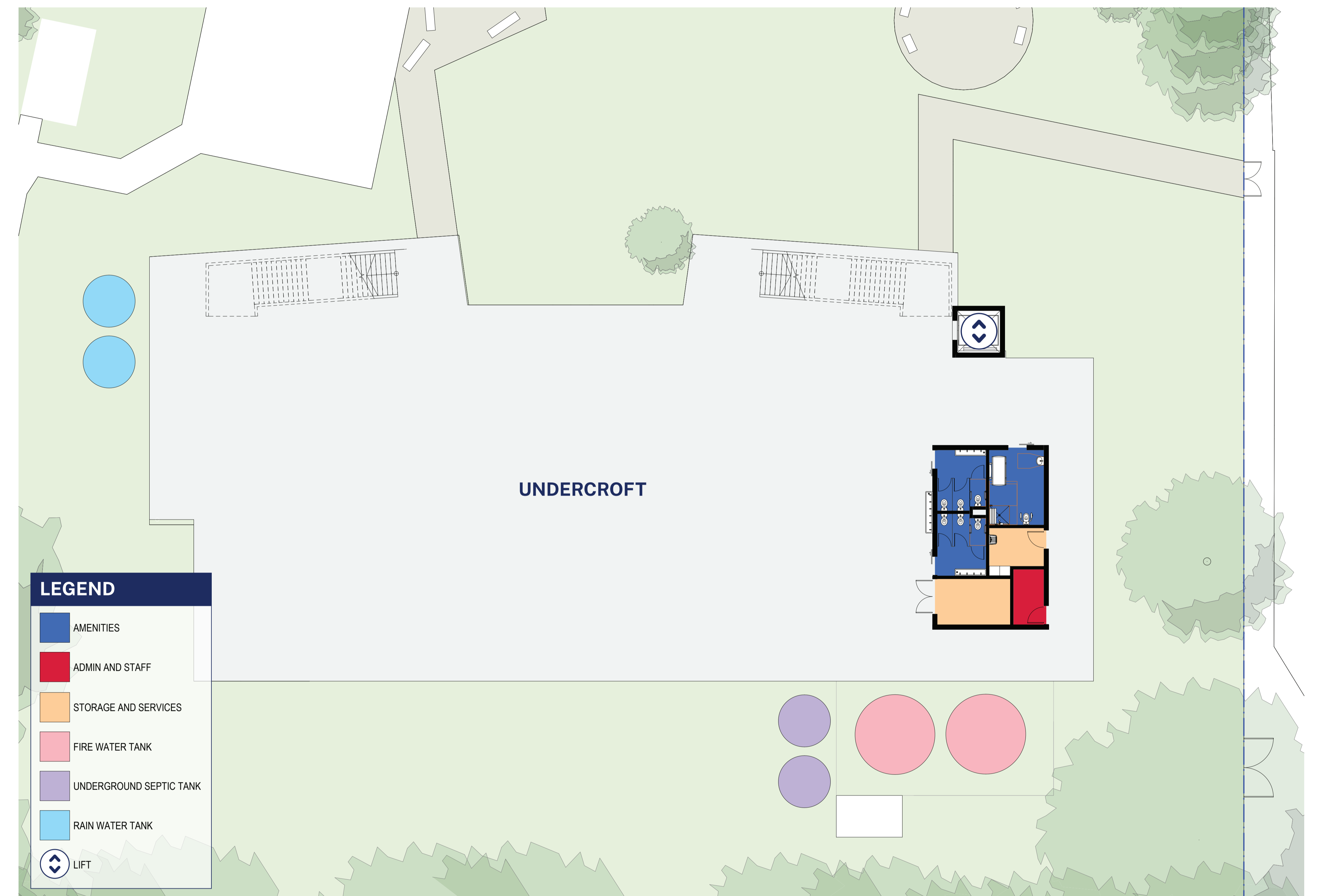
The layout of the multipurpose undercroft (the space under the first floor) is designed to maximise the use of space for the school and wider community.

The undercroft will be the ideal location for waiting for buses, games out of the sun and rain, and assemblies.

The undercroft will have adequate capacity for school and community meetings.

Male, female and accessible toilets are located in the undercroft.

Uniform storage, cleaner and storage facilities are also located here.



Undercroft floor plan (subject to change)

Blakebrook Public School

For more information phone: 1300 482 651
Email: schoolinfrastructure@det.nsw.edu.au
schoolinfrastructure.nsw.gov.au

We would like to acknowledge the Bundjalung people as the traditional custodians of this land and also pay our respects to elders both past and present.

Blakebrook Public School

Classrooms, library, administration and upstairs facilities



Raised level floor plan (subject to change)

Blakebrook Public School

For more information phone: 1300 482 651
Email: schoolinfrastructure@det.nsw.edu.au
schoolinfrastructure.nsw.gov.au

We would like to acknowledge the Bundjalung people as the traditional custodians of this land and also pay our respects to elders both past and present.

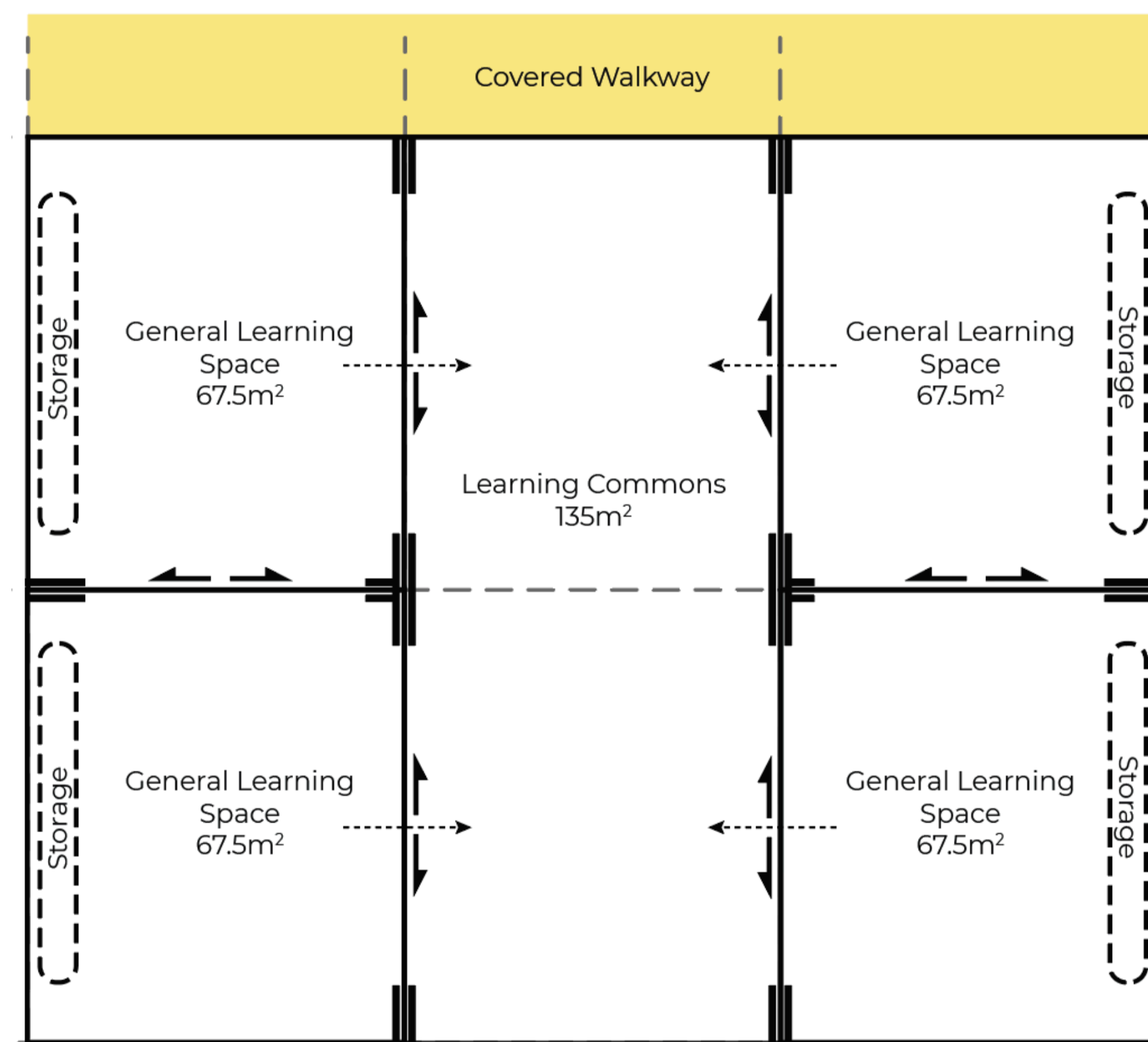


How standardised classroom layouts work in practice

STEP 1



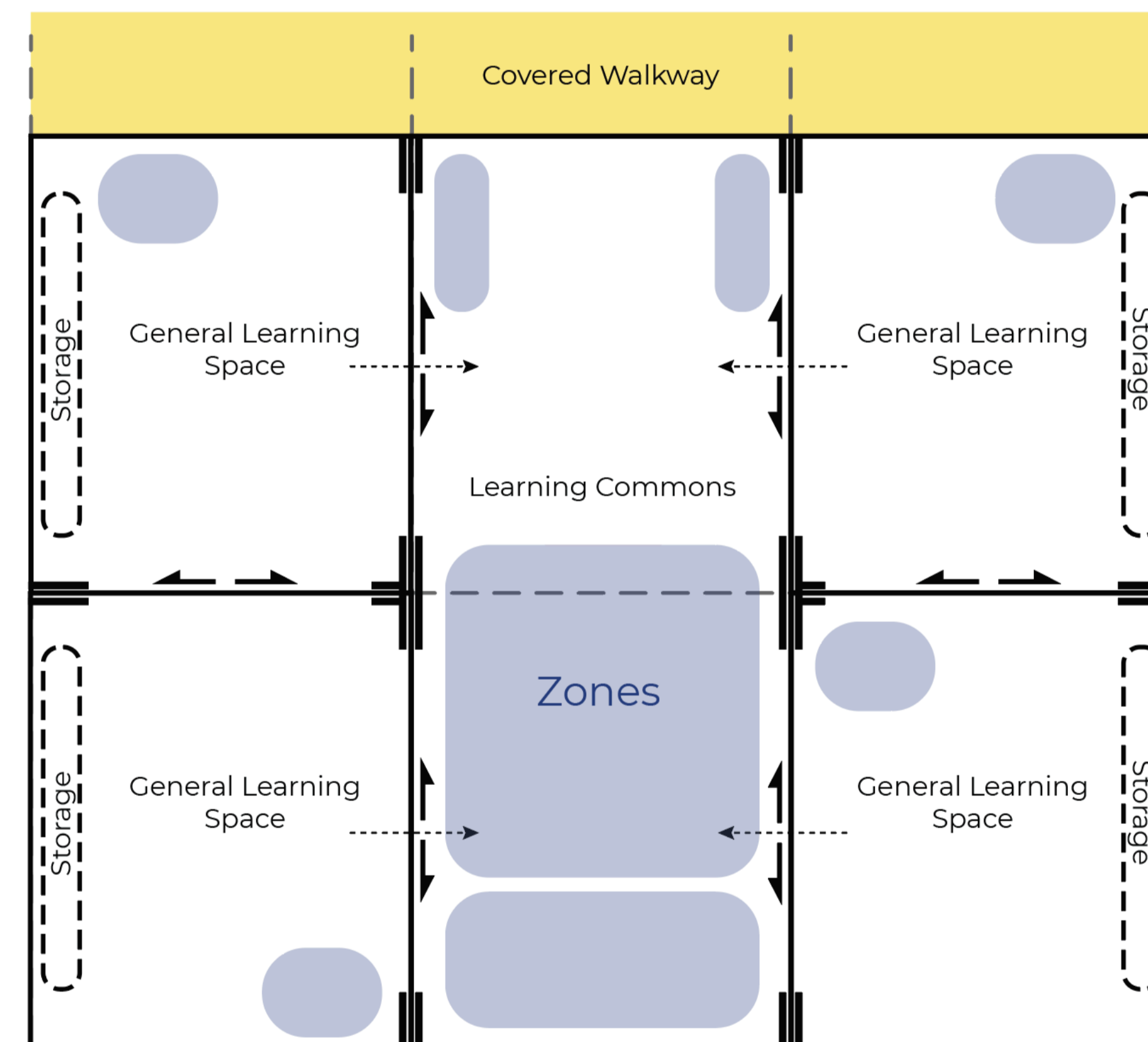
Standardised design for a school learning hub, featuring 4 learning spaces and a learning commons.



STEP 2



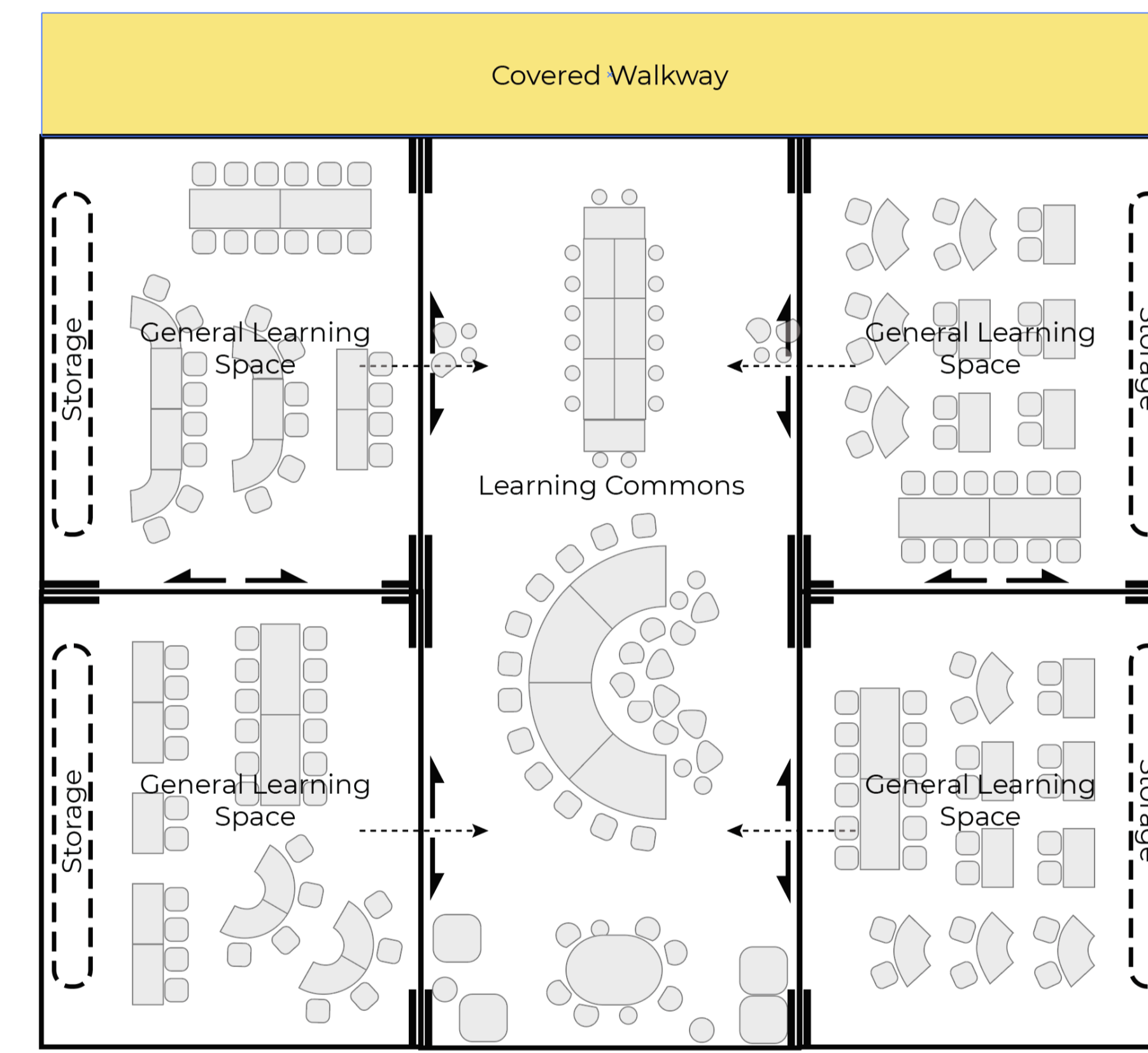
The design is modified to suit the school context outlined in the education rationale. Schools can include practical activity areas (PAAs), STEM spaces or other multi-purpose spaces (MPSs) that support collaboration, preparation or sensory needs.



STEP 3



Furniture settings are selected to align to local teaching and learning requirements. Furniture selection is supported by professional learning and other resources.



STEP 4



From a 2D plan to a flexible learning space, ready for students to engage in their learning activities.



Blakebrook Public School

For more information phone: 1300 482 651
Email: schoolinfrastructure@det.nsw.edu.au
schoolinfrastructure.nsw.gov.au

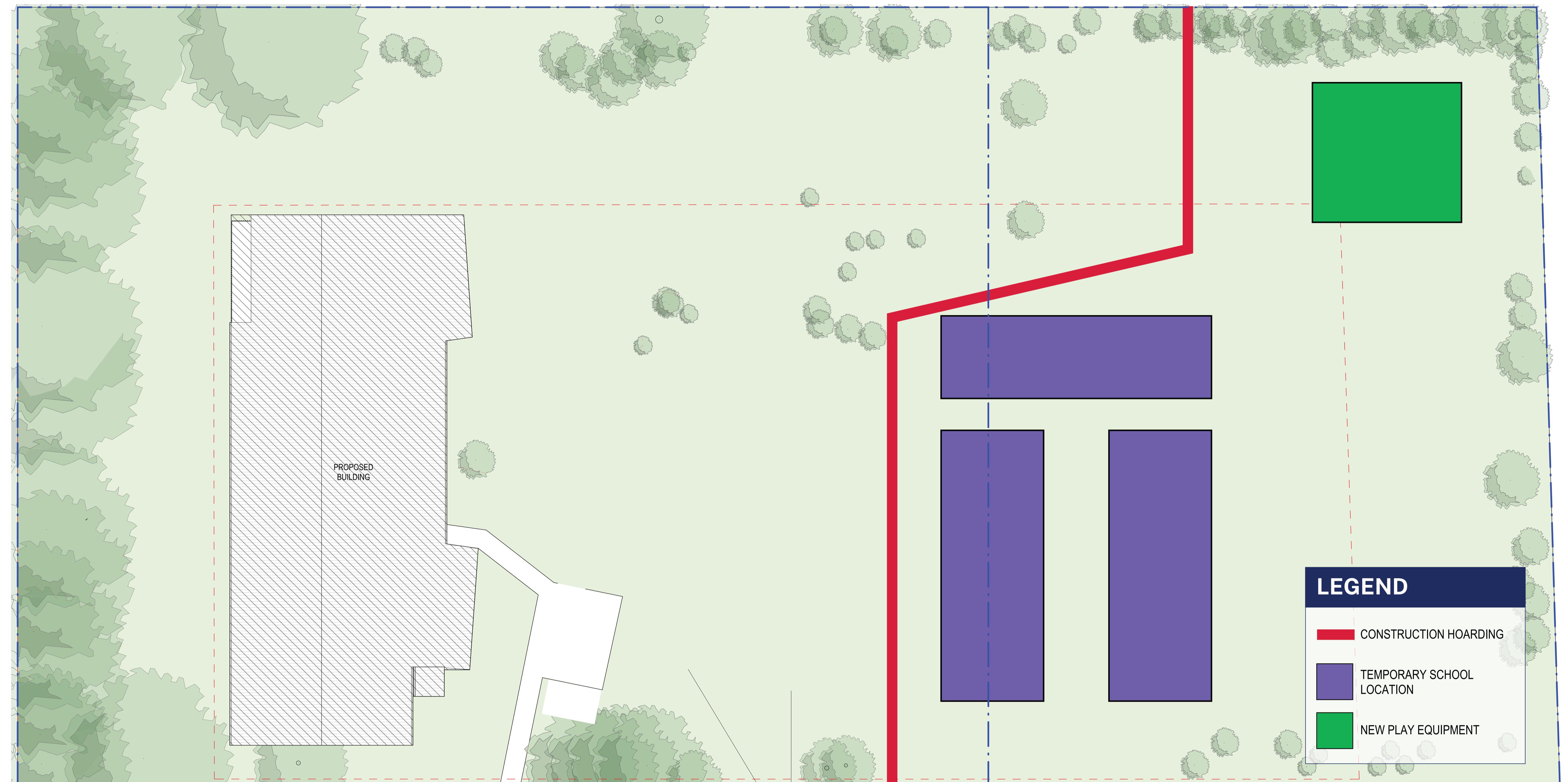
We would like to acknowledge the Bundjalung people as the traditional custodians of this land and also pay our respects to elders both past and present.



Temporary school plan

During the construction of the new buildings, the temporary school will be relocated within the school site.

We will ensure that the school and community are kept informed about the details and arrangements for the move throughout Term 4.



New temporary school location

Blakebrook Public School

For more information phone: 1300 482 651
Email: schoolinfrastructure@det.nsw.edu.au
schoolinfrastructure.nsw.gov.au

We would like to acknowledge the Bundjalung people as the traditional custodians of this land and also pay our respects to elders both past and present.

Consultation and keeping your school community informed

School Infrastructure NSW adopts a consistent and strategic approach to general community communications and engagement across all of our projects.

We are committed to engaging with all stakeholders, including the local community, through the entire project lifecycle; from planning, design and delivery to operations and maintenance.

Examples of when we will consult, communicate and engage with the school community while the project is underway may include:



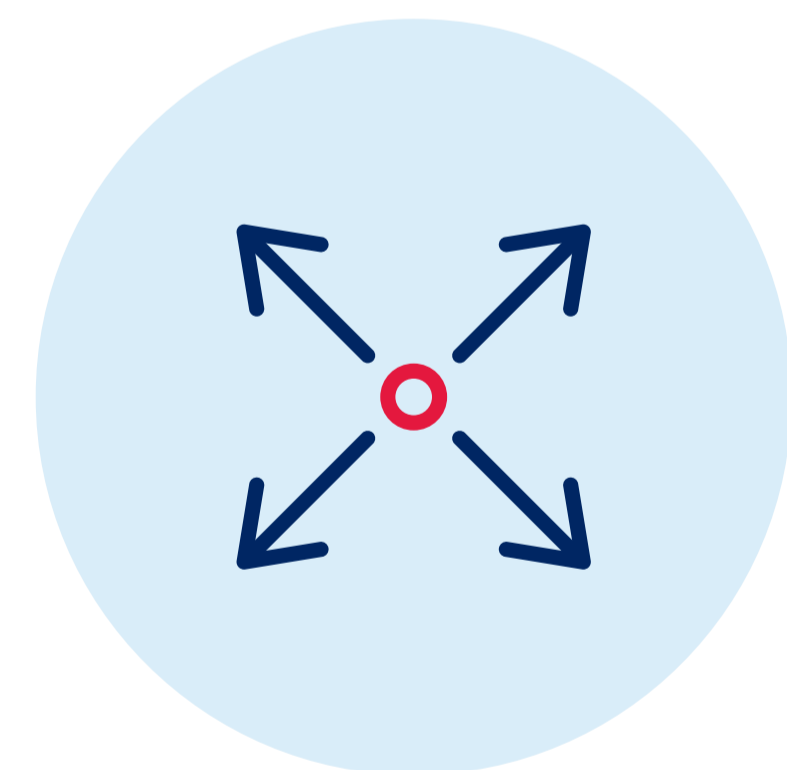
Engagement of consultants and contractors



Construction milestones



School design



Potential school or local community impacts

School Infrastructure NSW will continue to share information with the school community as work progresses, by posting project updates on the website.

We thank you for all your patience during this important program of work.

Stay informed



Website

Stay up to date by visiting the School Infrastructure NSW website schoolinfrastructure.nsw.gov.au



Email

Contact the Community Engagement team by emailing schoolinfrastructure@det.nsw.edu.au



Phone

Contact us between 9 am and 5 pm, Monday to Friday on **1300 482 651**

Blakebrook Public School

For more information phone: 1300 482 651
Email: schoolinfrastructure@det.nsw.edu.au
schoolinfrastructure.nsw.gov.au

We would like to acknowledge the Bundjalung people as the traditional custodians of this land and also pay our respects to elders both past and present.

