

Bexhill Public School

Information pack | June 2021



Artist impression of the Bexhill Public School upgrade

The NSW Government is investing \$7 billion over the next four years, continuing its program to deliver more than 200 new and upgraded schools to support communities across NSW. This is the largest investment in public education infrastructure in the history of NSW.

The NSW Department of Education is committed to delivering new and upgraded schools for communities across NSW. The delivery of these important projects is essential to the future learning needs of our students and supports growth in the local economy.

We are upgrading Bexhill Public School to provide new permanent learning spaces and bring students the latest education facilities.



New teaching and
learning spaces



Upgraded
administration
building



Upgraded OSHC
and staff spaces



Upgraded community hall for
shared use by the school



Landscaping and
upgraded sports court

Progress summary

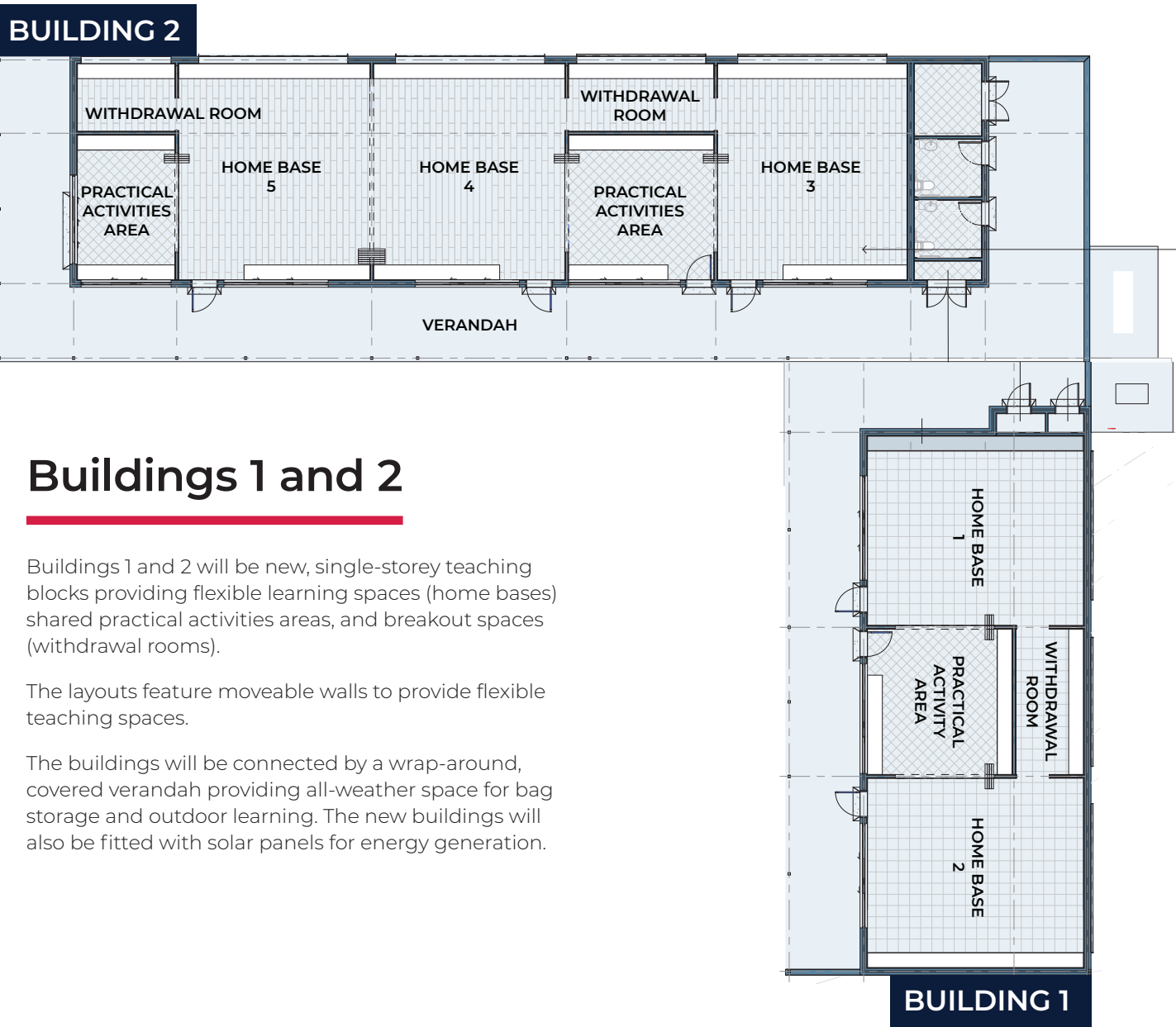
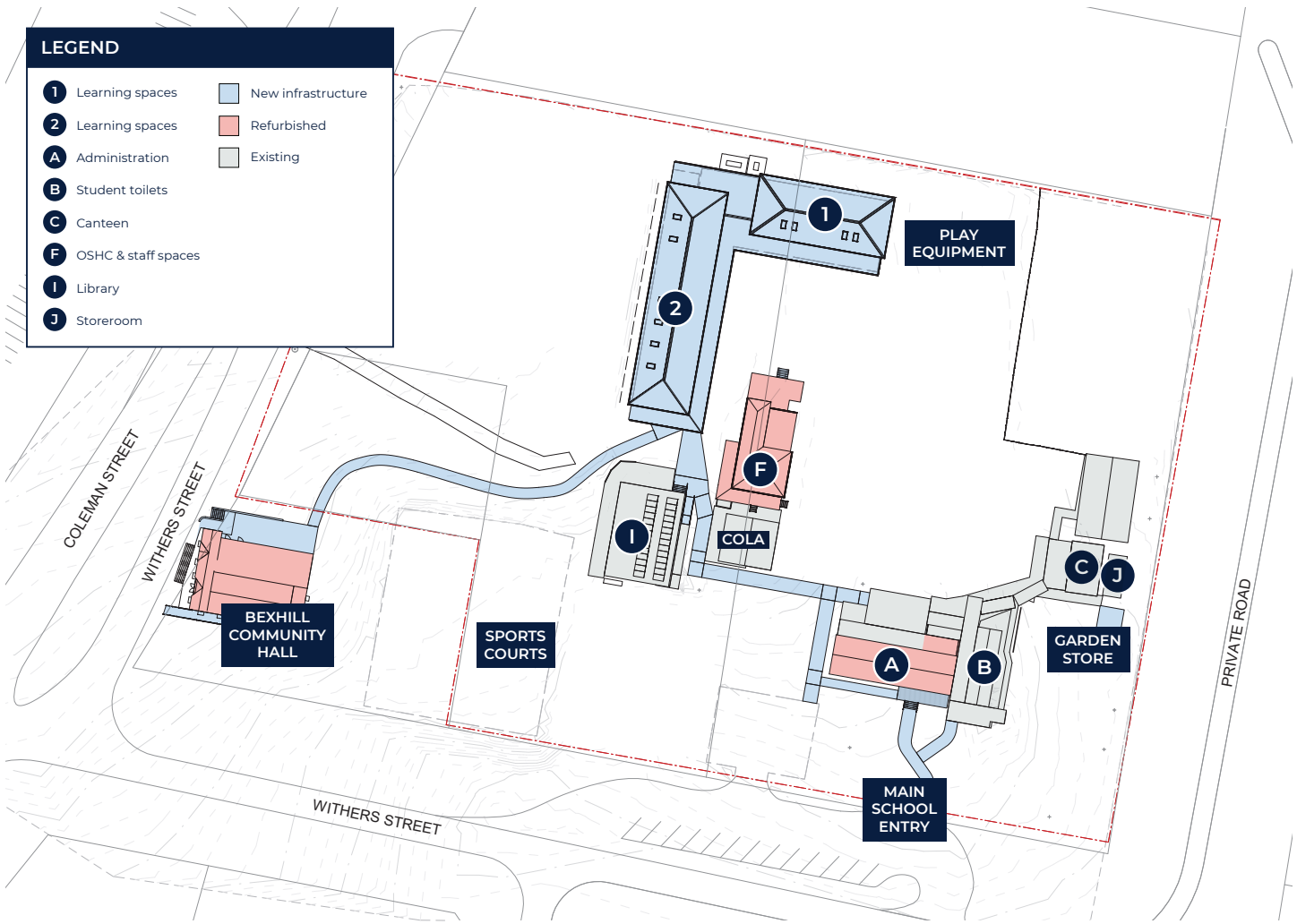
A development application (DA) for the construction of new permanent teaching spaces will soon be lodged with Lismore City Council. Following this, the DA will be placed on public exhibition on the council website (tracker. lismore.nsw.gov.au) for the community to view and provide comments.

To ensure the school benefits from new facilities as soon as possible, we are conducting a Review of Environmental Factors (REF) which will allow us to progress minor development works, including refurbishment of the administration building (Block A) and the former principal's residence (Block F), while the DA is being assessed.

We are also preparing to lodge a separate DA for the refurbishment of the locally heritage-listed Bexhill Community Hall, which is proposed to be used by the school as part of a joint-use agreement.

Proposed site plan

The upgraded school will feature two new teaching and learning buildings (Buildings 1 and 2) located around the central green heart of the school. Other indoor and outdoor spaces will be refurbished, including the Bexhill Community Hall and existing sports courts. The upgrade to the Bexhill Community Hall will be submitted as a separate planning application to Council.



Buildings 1 and 2

Buildings 1 and 2 will be new, single-storey teaching blocks providing flexible learning spaces (home bases) shared practical activities areas, and breakout spaces (withdrawal rooms).

The layouts feature moveable walls to provide flexible teaching spaces.

The buildings will be connected by a wrap-around, covered verandah providing all-weather space for bag storage and outdoor learning. The new buildings will also be fitted with solar panels for energy generation.

Project schedule



Work is expected to commence in late 2021, subject to necessary approvals. The first work to take place on site is expected to be the refurbishment of Block A to provide improved administration spaces including the principal's office, staff room, school office, sick bay and interview room. A temporary administration building will be installed on site to allow Block A to be vacated and refurbished.

Once the DA for the main scope of work has been assessed, sheds to the west of Block F will be demolished to enable ground works to start for the construction of Buildings 1 and 2. Further information on other stages, including refurbishment of the shared community and school hall, will be provided as the project progresses.

Frequently asked questions

Why are two development applications required for the project?

The majority of the scope of work for the project, which will take place within the school site which is owned by the NSW Department of Education, is covered by one development application (DA). A second DA is required for the work to the Bexhill Community Hall which is proposed to be refurbished for shared school and community use. The hall is locally heritage-listed and located on Crown land which means additional planning is required prior to lodgement of the DA.

What is a Review of Environmental Factors?

In 2017 the NSW Government introduced a new education-based State Environmental Planning Policy (SEPP) to make it easier to provide new and upgraded education facilities for communities. Under the SEPP minor development works can be carried out without development consent from council.

For the Bexhill Public School upgrade, the allowable works include refurbishment of the administration building (Block A) and the former principal's residence (Block F). To ensure the school benefits from new facilities as soon as possible, we are planning to progress these works while the DA is being assessed.

Before commencing the works we need to undertake a Review of Environmental Factors (REF) to determine whether there will be any potential impacts on the environment. As part of the REF process, we will issue a letter to neighbouring residents and stakeholders, providing them with details of the proposed work and contact details for feedback or further information.

What impact will the project have on existing vegetation?

The design of the upgrade retains the school's bush garden and large areas of green, vegetated space. We have worked with a professional ecologist to determine the impact of the proposed development on trees across the site and the majority of trees will be retained. The small number of trees recommended for removal includes weed species, native and non-native trees, and trees in poor to fair health and condition. New trees will be planted as part of the landscaping plan. The ecologist's report and landscaping plan will be available to view as part of the public exhibition of the DA.

Stay informed

We are committed to working together with our school communities and other stakeholders to deliver the best possible learning facilities for students.

To stay up to date with opportunities for school communities to get involved in the project, visit the Bexhill Public School project page on the School Infrastructure NSW website.

Your feedback is important to us. For more information, questions or to make a comment, please contact us.

Contact us



Website

Stay up to date by visiting the School Infrastructure NSW website
schoolinfrastructure.nsw.gov.au



Email

Contact the Community Engagement team by emailing
schoolinfrastructure@det.nsw.edu.au



Phone

Contact us between 9:00am and 5:00pm, Monday to Friday on **1300 482 651**