

Bexhill Public School

Works notification

5 August 2022

A project is underway to upgrade Bexhill Public School. The project will deliver: five new permanent learning spaces, an upgraded administration building, an upgraded OSCH and staff spaces in the former principal's residence, refurbishment of the community hall for shared use by the school, and an upgraded sports court and landscaping.

Tree removal - Monday 8 August 2022

On Monday 8 August 2022, works will begin to remove 21 trees within the construction zone to make way for the new facilities. The identified trees were approved for removal in the Development Application (DA) determination by Lismore City Council.

The location of these trees is identified in a map overleaf.

All tree work will be carried out by a suitably qualified arborist and in accordance with SafeWork NSW regulations. All work will be completed in strict accordance with all applicable legislation, regulations, policies and guidelines.

Replacement planting and landscaping will be delivered as part of the school upgrade project. This will include the planting of 26 new trees throughout the site.

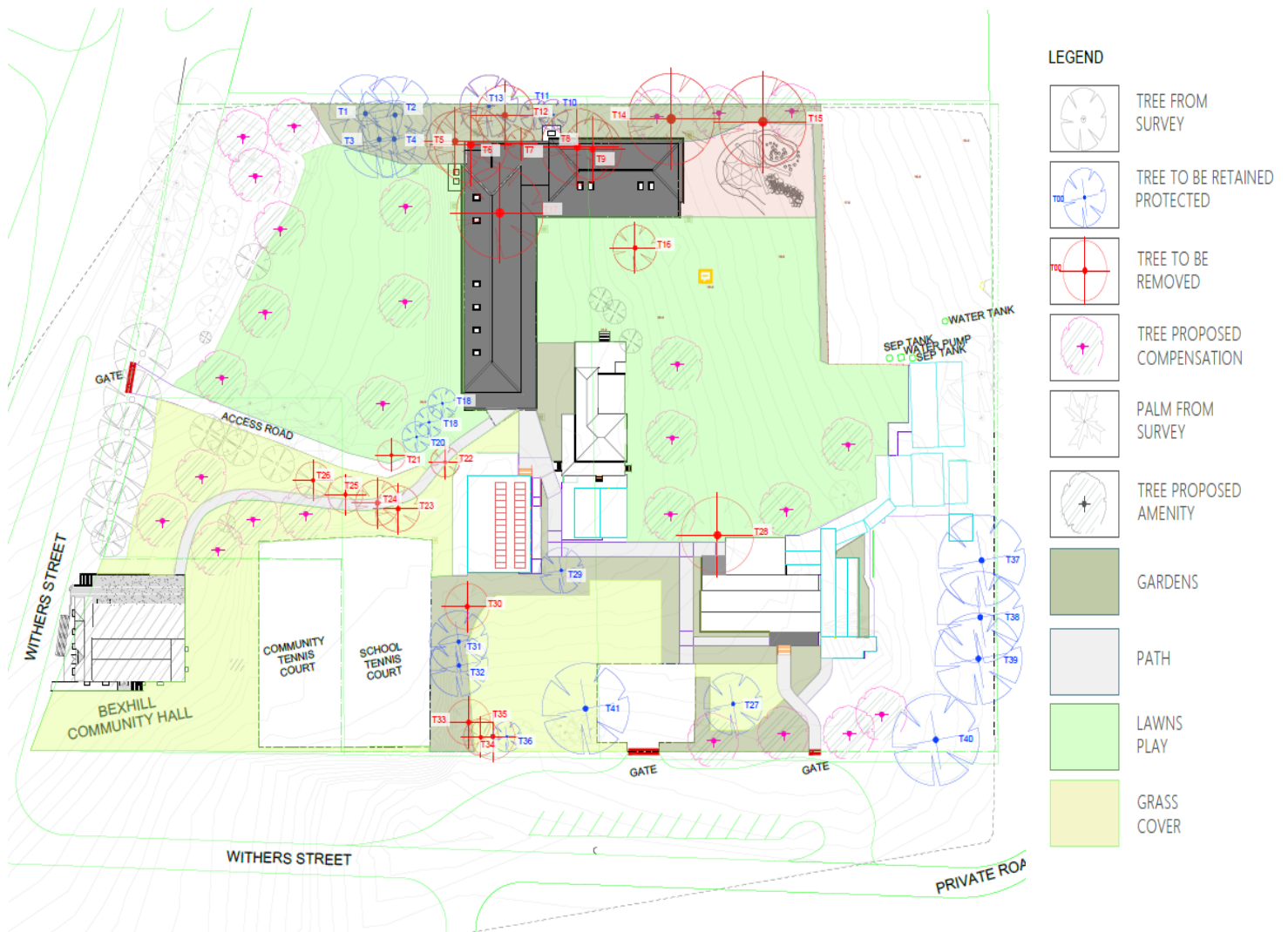
Working hours

Standard construction working hours will be 7:00am to 6:00pm Monday to Friday, and 8:00am to 1:00pm on Saturdays. No work will take place on Sundays or public holidays unless otherwise notified.

For more information contact:

School Infrastructure NSW
Email: schoolinfrastructure@det.nsw.edu.au
Phone: 1300 482 651
www.schoolinfrastructure.nsw.gov.au

Site Map



For more information contact:

School Infrastructure NSW
 Email: schoolinfrastructure@det.nsw.edu.au
 Phone: 1300 482 651
www.schoolinfrastructure.nsw.gov.au