



New Bexhill Public School classroom building with solar panels

Bexhill Public School Upgrade

Welcome Pack | April 2024

Welcome to your new classrooms

We are excited that your new classrooms are now complete and ready for you to use. To date your school upgrade has delivered:



5 new
flexible
classrooms



Refurbished staff
and administration
space



Refurbished
outside of school
hours care
(OOSHC) facilities

The next stage of upgrade work to your school will include:



Landscaping



Refurbishment of Bexhill
Community Hall for shared
use with the school

Thank you for your patience during construction. We are delighted to deliver this project for the Bexhill community and hope that you enjoy your new spaces.

Message from your Principal

Our staff and students are incredibly excited to be finally moving into our fabulous new inclusive and purpose built classrooms which will offer state of the art classrooms for all aspects of the curriculum.

We also look forward to the completion of our school grounds and shared space in the Bexhill Community Hall.

I acknowledge and thank staff and the Bexhill Public School community for their ongoing support and patience throughout the process. We look forward to celebrating the completion of these wonderful new facilities in the near future.

Helen Craigie

School Principal
Bexhill Public School



Internal view of Building K classrooms



Building K practical activities area



Bag storage and verandah



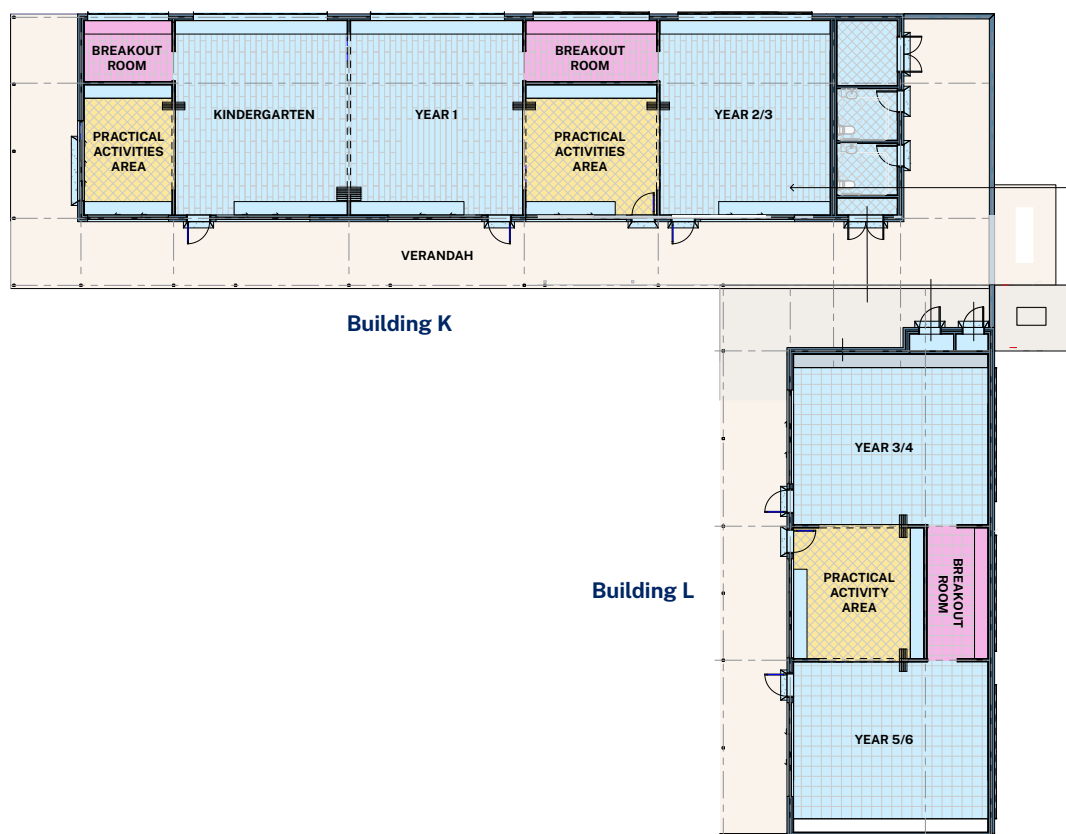
Building L classroom

Modern classrooms

Bexhill Public School's two new single-storey teaching blocks provide modern flexible classrooms with movable walls, shared practical activities areas, and multipurpose rooms and accessible toilets. The flexible classrooms allow teachers to bring two classes together or teach in smaller groups.

The buildings are connected by a wrap-around, covered verandah, which can also be used for storing school bags and outdoor learning. The new buildings are also fitted with roof top solar panels.

The new classroom building follows the refurbishment of the 1882 school building, which the school is now using as administration spaces, and the former Principal's residence, which is being used for Out of School Hours Care (OOSHC).





Building L Year 3-4 and 5-6 classrooms

Frequently asked questions

What work is next in the upgrade?

Upcoming work includes:

- removing demountable classroom buildings from the school
- refurbishing the heritage listed Bexhill Community Hall for shared use with the school which will include a new accessible toilet, air conditioning and chair store, replacing the kitchenette and installing a new bifold door to open the hall to the outdoors
- landscaping in consultation with the school, including pathways, garden beds and trees
- installing a new and versatile multi purpose games court where the old clay tennis court is now located.

When will the upgrade be completed?

We are aiming to complete the landscaping and hall refurbishment in Term 2 2024. This is dependent on the weather.

Will there still be construction fencing in the school grounds?

Yes, construction fencing will be moved to the front of the school to allow the landscaping to be done.

All construction fencing and contractor offices will be removed from the school when the upgrade is completed.

Contact us

For information about school activities and operations, contact the school directly:

Principal: Helen Craigie

Website: bexhill-p.schools.nsw.gov.au

Email: bexhill-p.school@det.nsw.edu.au

Phone: 02 6628 4223

For more information about this project, contact School Infrastructure NSW:

Website: schoolinfrastructure.nsw.gov.au

Email: schoolinfrastructure@det.nsw.edu.au

Phone: 1300 482 651