

Bangalow Public School

Information pack | June 2021



Artist impression of the Bangalow Public School upgrade

The NSW Government is investing \$7 billion over the next four years, continuing its program to deliver more than 200 new and upgraded schools to support communities across NSW. This is the largest investment in public education infrastructure in the history of NSW.

The NSW Department of Education is committed to delivering new and upgraded schools for communities across NSW. The delivery of these important projects is essential to the future learning needs of our students and supports growth in the local economy.

We are upgrading Bangalow Public School to provide new permanent learning spaces and bring students the latest education facilities.



New and refurbished teaching
and learning spaces



Reburbished
administration space



New library



Landscaping

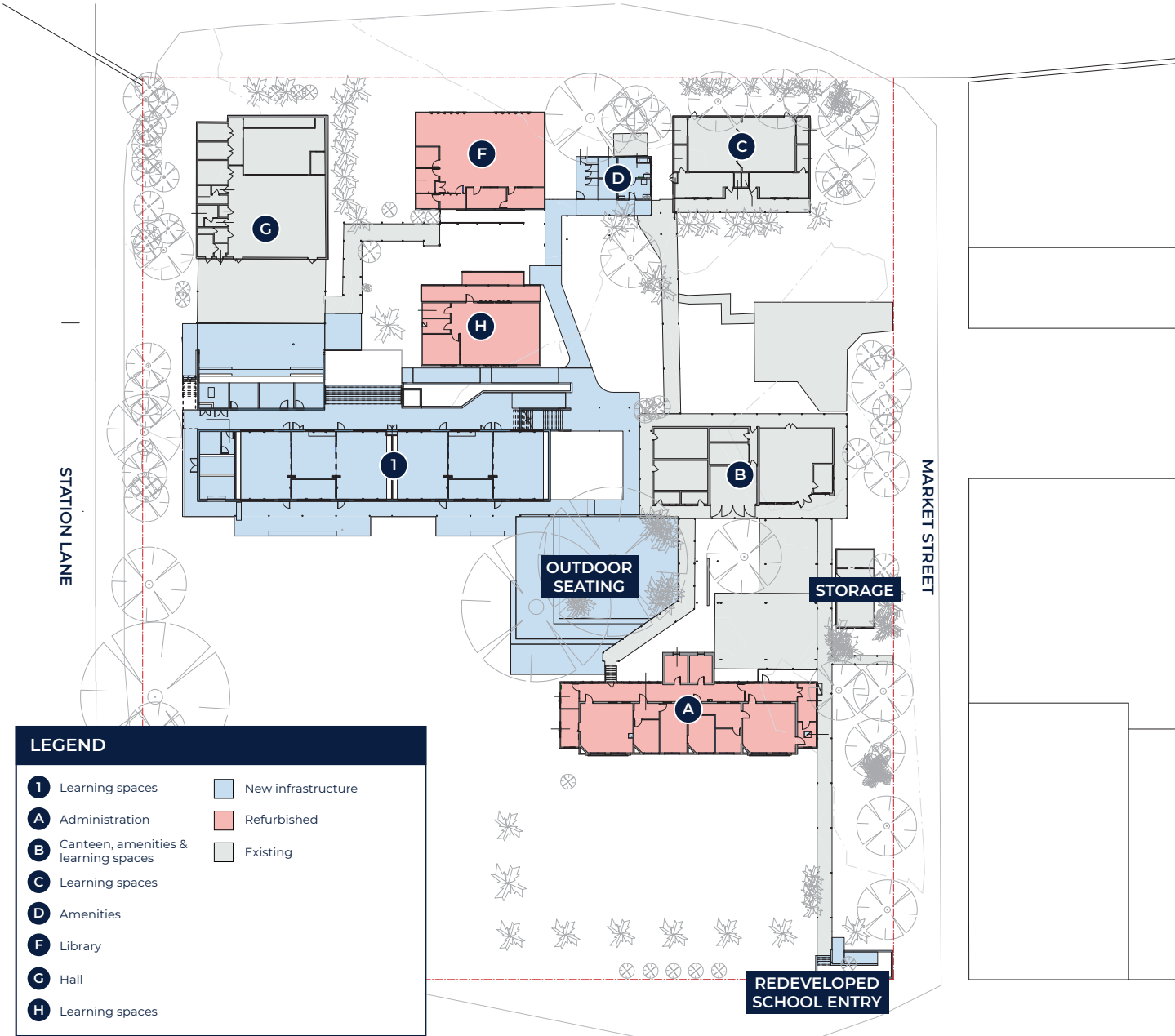
Progress summary

A development application (DA) for construction of the new teaching block (Building 1) and refurbishment of the heritage building (Block A) will soon be lodged with Byron Shire Council. Following this, the DA will be placed on public exhibition on the council website (datracker.byron.nsw.gov.au) for the community to view and provide comments.

To ensure the school gains the benefits of new facilities as soon as possible, we are also conducting a Review of Environmental Factors (REF) which will allow us to progress some aspects of the upgrade, including refurbishment of Block F and Block H, while the DA is being assessed.

Proposed site plan

The upgrade will deliver eight new, permanent teaching and learning spaces within an architecturally designed building (Building 1). The refurbishment of the heritage Block A into an upgraded administration space will also provide a new public entry for the school. Outdoor areas and wayfinding will be improved across the site and an accessible ramp will be provided on the main entry from Byron Street.

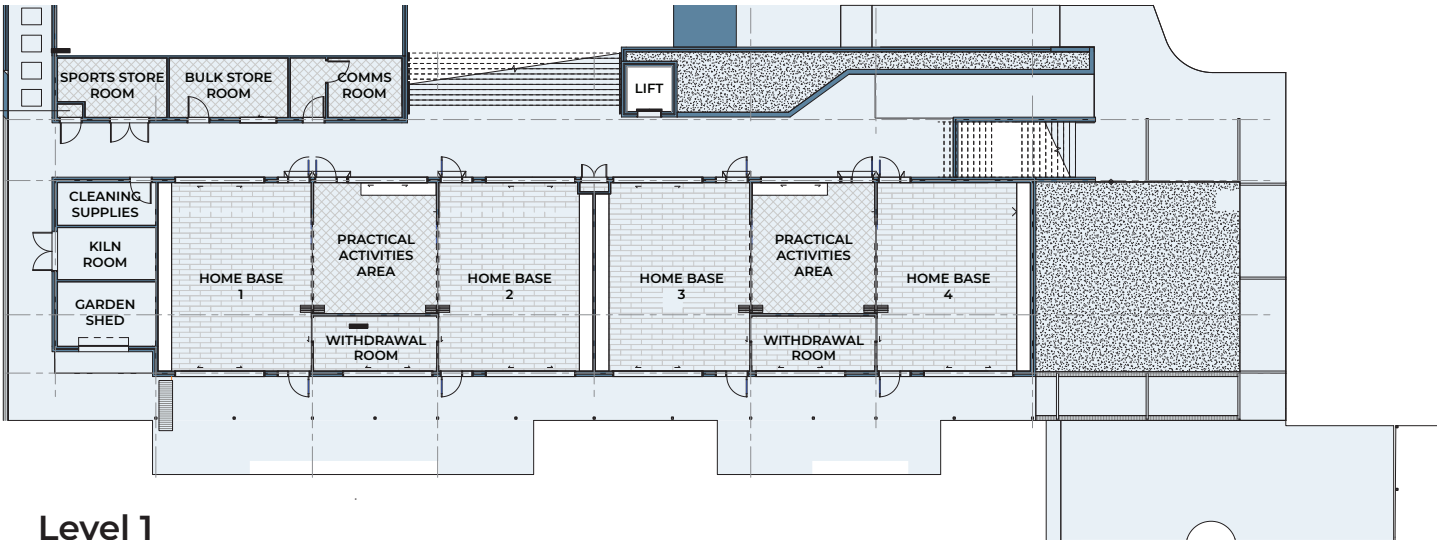


Building 1

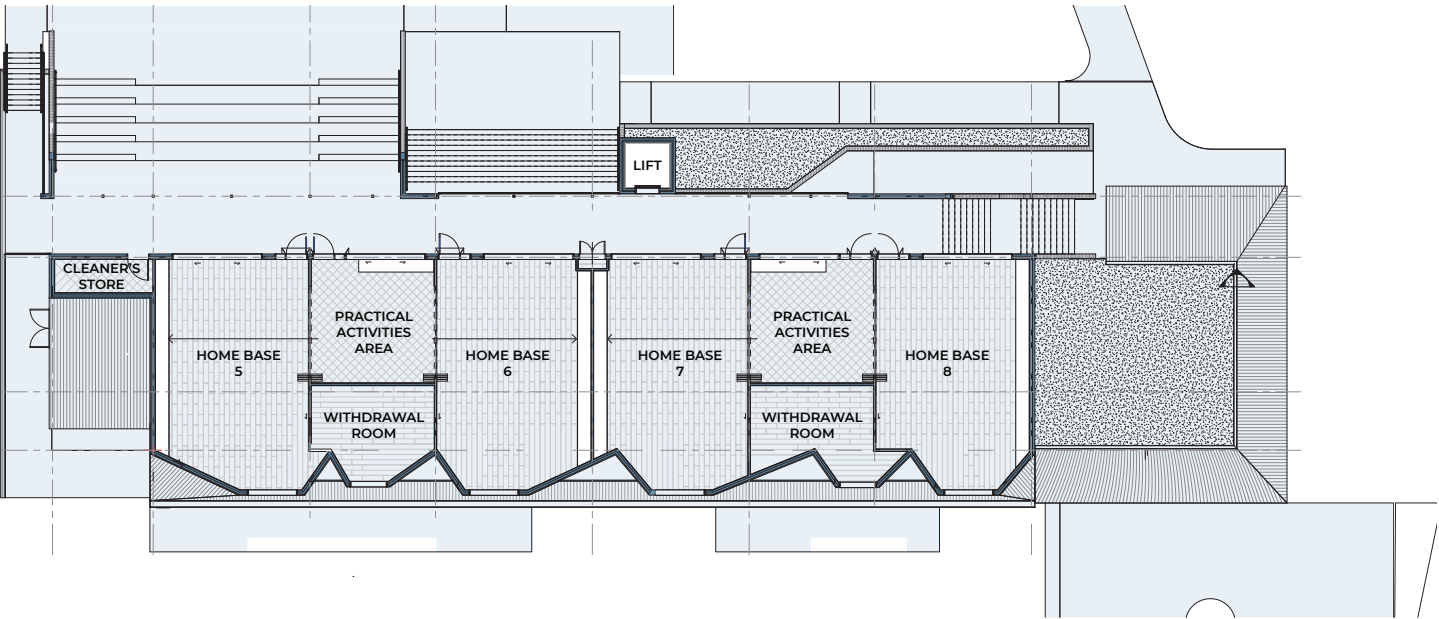
Building 1 will be a new, two-storey teaching block with eight flexible learning spaces (home bases), shared practical activities areas, and breakout spaces (withdrawal rooms). The external finish, roof profile, height and set-back of the new building will complement the existing heritage building.

The design of the building features moveable walls so the area will be flexible for use as individual classrooms, co-teaching classrooms, or a connected, larger space. A new outdoor seating area under the nearby mature trees offers opportunities for outdoor learning.

Ground floor



Level 1



Construction approach

Work is expected to commence in late 2021, subject to necessary approvals. The first work to take place on site is expected to be the refurbishment of Block F which will be redeveloped to provide a new library including flexible learning space, a library office and storage.

Once the new library is finished, the current library will be vacated, allowing Block H to be refurbished for use as a learning space. As the project progresses, we will keep you informed regarding construction timing and any associated changes to school operations.

Project schedule



Frequently asked questions

What is a Review of Environmental Factors?

In 2017 the NSW Government introduced a new education-based State Environmental Planning Policy (SEPP) to make it easier to provide new and upgraded education facilities for communities. Under the SEPP minor development works can be carried out without development consent from council.

For the Bangalow Public School upgrade, the allowable works include refurbishment of Blocks F and H. To ensure the school benefits from new facilities as soon as possible, we are planning to progress these works while the DA is being assessed.

Before commencing the works we need to undertake a Review of Environmental Factors (REF) to determine whether there will be any potential impacts on the environment. As part of the REF process, we issue a letter to neighbouring residents and stakeholders, providing them with details of the proposed work and contact details for feedback or further information.

What sustainability features have been integrated into the design?

Solar panels will be installed on the new building (Building 1) for energy generation. Rainwater will be collected for irrigation and toilet use. A waste assessment will be undertaken to determine what materials can be recycled or reused in the project build. The landscaping design will feature drought tolerant plants and a student learning garden is proposed.

Stay informed

We are committed to working together with our school communities and other stakeholders to deliver the best possible learning facilities for students.

To stay up to date with opportunities for school communities to get involved in the project, visit the Bangalow Public School project page on the School Infrastructure NSW website.

Your feedback is important to us. For more information, questions or to make a comment, please contact us.

Contact us



Website

Stay up to date by visiting the School Infrastructure NSW website
schoolinfrastructure.nsw.gov.au



Email

Contact the Community Engagement team by emailing
schoolinfrastructure@det.nsw.edu.au



Phone

Contact us between 9:00am and 5:00pm, Monday to Friday on **1300 482 651**