

# Bangalow Public School

Information Pack – July 2024



New classroom building

The upgrade to Bangalow Public School is now finished and all areas are open for use.

The completed project has delivered:



A new two storey building with 8 modern classrooms



A new amenities block with girls toilets and accessible facilities



A newly refurbished heritage building for administration



A refurbished library and updates to existing classrooms



Brand new flexible furniture throughout the school



Landscaping and seating areas



A sports court and passive play area including sand pit



A nature-based playground

Thank you for your patience during construction. We are thrilled to have delivered this project for the school community.

## For more information

Phone: 1300 482 651

Email: [schoolinfrastructure@det.nsw.edu.au](mailto:schoolinfrastructure@det.nsw.edu.au)

Website: [schoolinfrastructure.nsw.gov.au](https://schoolinfrastructure.nsw.gov.au)





## Message from your Principal



It's wonderful to see the final scaffolding come down at Bangalow Public School after such a huge transformation. Our students, staff and community are loving our new modern classrooms, exciting play areas, lighter, brighter, more open school grounds and beautifully refurbished heritage building. I know I am.

I would like to thank the community for your patience during the upgrade work. Bangalow Public School has such a long history in our local community. Our contemporary new school facilities ensure that our students are in the best environment to thrive, whilst continuing to receive a high quality education.

Carol Antoun  
Principal, Bangalow Public School

## New modern classrooms

We have removed 5 demountable buildings and replaced them with 8 modern permanent classrooms and shared activities areas in a two-storey building that overlooks the leafy school grounds.

The new classrooms are accessible and inclusive, with ramps, lift access, braille signage and hearing loops.

As part of the NSW Government's commitment to sustainability in schools, rooftop solar panels have been installed on the new building.



Fun learning for environments students



Modern classrooms and flexible furniture

## A new chapter for a heritage building

The heritage building (Building A) has been carefully refurbished as modern school administration and staff facilities that retain the heritage fabric of the original school rooms. As part of the department's ongoing maintenance programs, the roof of the building has also been replaced with materials that match the original school building.



Newly refurbished heritage building



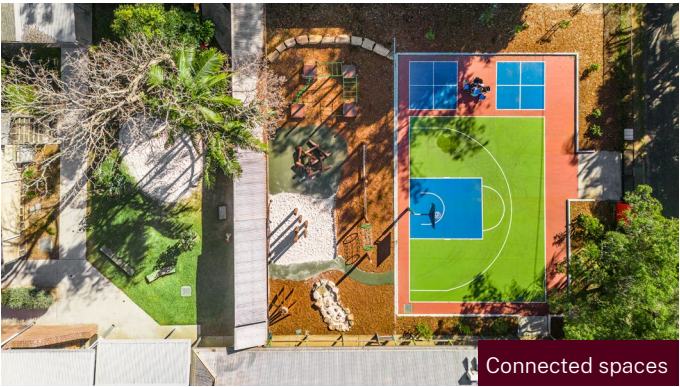
New roof

## Landscaping

Landscaping includes new native trees, shaded curved seating areas and pathways to better open and connect Bangalow Public School's space. The new classroom building includes a tiered seating area connected to the school hall.



New outdoor seating areas



Connected spaces

## A great place to learn and play

The upgrade includes a new multi-purpose sports court for student games, returfed school ovals, and a nature-based playground that was jointly funded by Bangalow Public School, and the Bangalow Public School P&C.



Nature based playground and sports court



Aerial of Bangalow Public School





Solar panels on the new classroom building

## Thank you

We would like to thank you for your patience while we delivered this upgrade to the school. Your support and cooperation has been invaluable and made it possible for us to deliver these new facilities for the students and staff of Bangalow Public School.

**For more information about this project, contact School Infrastructure NSW:**

**Website:** [schoolinfrastructure.nsw.gov.au](https://schoolinfrastructure.nsw.gov.au)

**Email:** [schoolinfrastructure@det.nsw.edu.au](mailto:schoolinfrastructure@det.nsw.edu.au)

**Phone:** 1300 482 651

**For information about school activities and operations, contact the school directly:**

**Principal:** Carol Antoun

**Website:** [bangalow-p.schools.nsw.gov.au](https://bangalow-p.schools.nsw.gov.au)

**Phone:** [bangalow-p.school@det.nsw.edu.au](mailto:bangalow-p.school@det.nsw.edu.au)

**Phone:** 02 6687 1434



New accessible amenities