

Austral Public School upgrade

Information Pack – February 2025



Artist impression of upgrade

Investing in our schools

As part of the NSW Government's plan to rebuild public education, the 2024-25 Budget is delivering record education funding, including \$3.6 billion for new and upgraded schools in Western Sydney. This targeted investment will ensure growing communities get access to a world-class public education.

Project overview

The upgrade for Austral Public School is in progress and will include fit-for-purpose learning spaces and improved core facilities to support the growing student population in the area.

The upgrades will be delivered in 2 stages. Stage 1 is forecast to be finished by late 2026 and will include:



20 new classrooms



3 new support learning classrooms



Upgrade and refurbishment of administration facilities and library



A new staff car park

In addition to Stage 1, the 2024-25 Budget has committed funding to progress with Stage 2 of the project which will provide additional school capacity for this growing community. Further detail on the scope and timing of Stage 2 will be shared as the project progresses.

For more information

Phone: 1300 482 651

Email: schoolinfrastructure@det.nsw.edu.au

Website: schoolinfrastructure.nsw.gov.au





Planning application

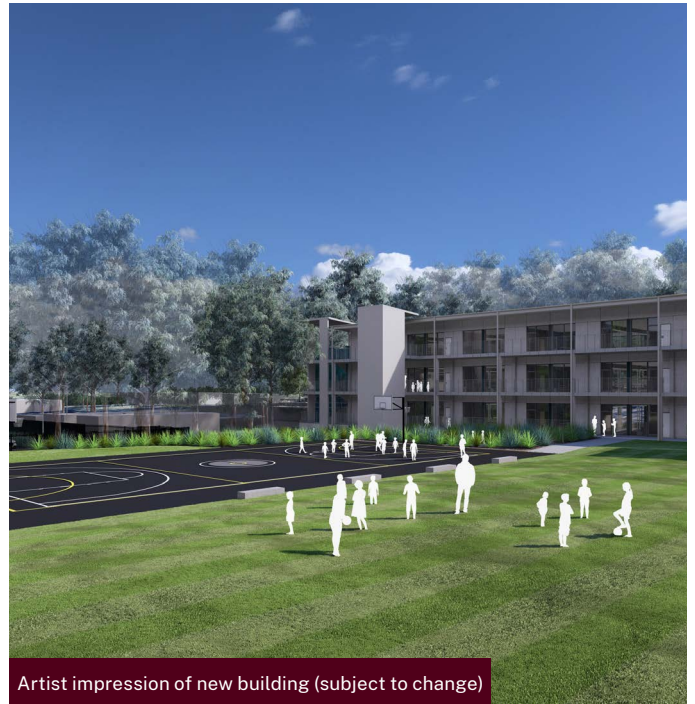
We are now finalising the planning application for the upgrade to Austral Public School. The project will be assessed by the Department of Education as a Review of Environmental Factors (REF) under the *Environmental Planning Assessment Act 1979* (EP&A Act). All documentation for the REF will be on exhibition in the near future on our project webpage at edu.nsw.link/AustralPS.

The proposed activity under the REF includes:

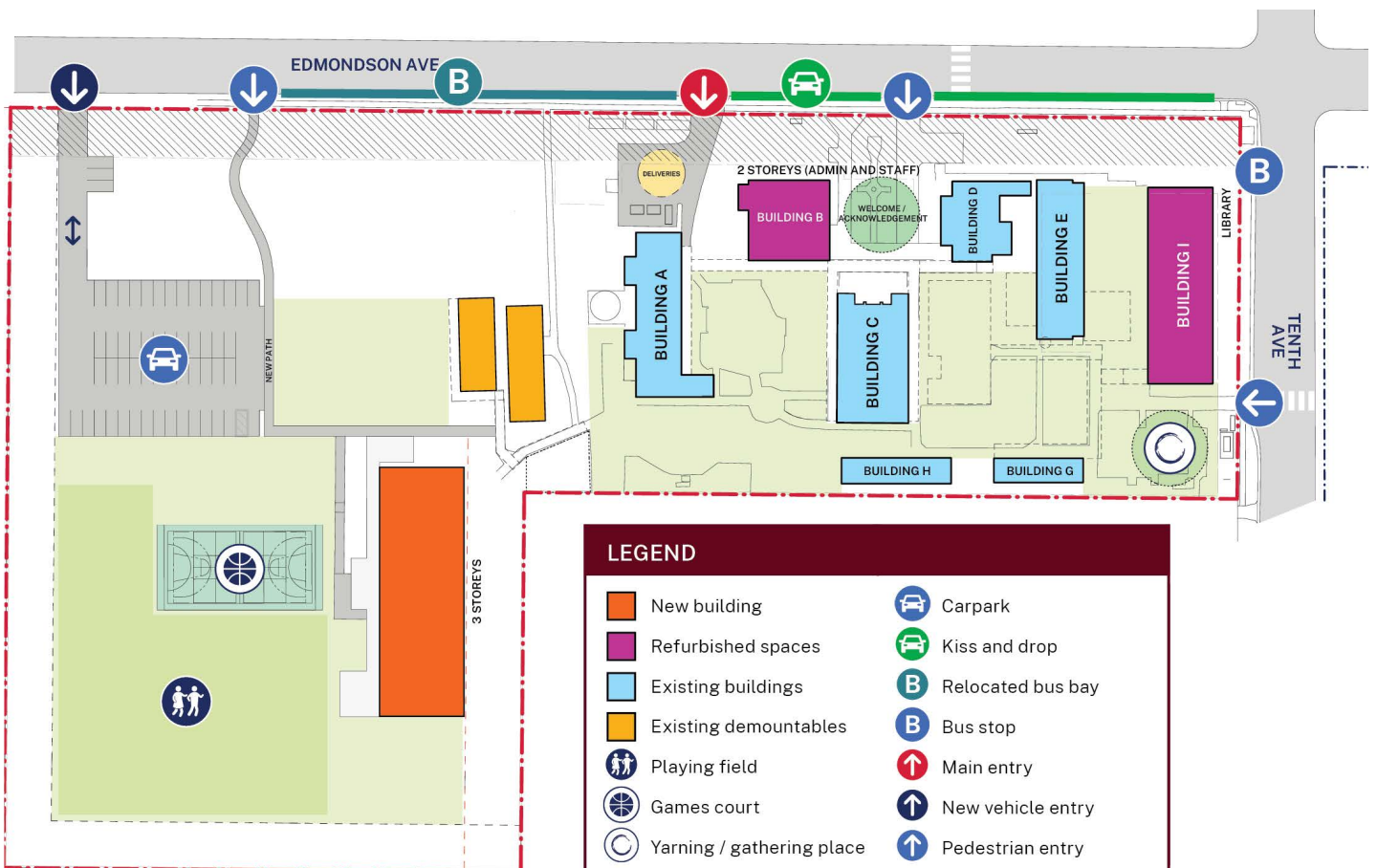
- Demolition of existing structures and removal of trees, as well as other site preparation works.
- Building a new 3-storey building that includes 20 permanent teaching spaces and 3 support teaching spaces.
- Conversion of the first floor of Building B from a library to a staff room, and minor modifications on the ground floor.
- Refurbishment and change of function of Building I from classrooms to a library.
- Car parking with 57 new spaces including 1 accessible space.
- New driveway and access gate from Edmondson Avenue.
- Upgrade of the sports field.
- Internal pathways, fencing, utility upgrades and associated works.
- Off-site public domain improvements including retention and upgrading of the Kiss and Drop area and a proposed pedestrian crossing on Tenth Avenue (these works are subject to discussions with the Council and Transport for NSW).

Project timeline





Proposed site plan



Connection to Country

The outdoor space design at the school acknowledges Aboriginal cultural heritage through several key features:

- **Welcome/Acknowledgement Area:** At the entrance of the school, there is a designated space for welcoming and acknowledging Aboriginal culture, which reflects respect for the traditional owners of the land.
- **Native plant and tree species:** The design includes the use of native plants and trees that are indigenous to the region, which helps to create a connection to the local environment and promotes biodiversity.
- **Indigenous narrative in signage:** There is an opportunity to incorporate Indigenous stories and cultural narratives into the school signage, allowing for the celebration of Aboriginal heritage and education for students and visitors.

Together, these elements create an outdoor space that honours and reflects Aboriginal cultural heritage, fostering a sense of community and respect.

Next steps

- The REF will be on public exhibition once it has been finalised and lodged.
- At the end of the exhibition period any submissions from neighbouring residents and key stakeholders will be assessed and the application will be reviewed for final determination by the Department of Education.
- Award the construction contract.
- When the contractor has been appointed, we will establish the timeline for delivery of the upgrades and share this with school community.

More information

We are committed to working together with our school communities and stakeholders to deliver the best learning facilities for students. We will continue to distribute regular project updates to keep the community up to date with our progress. You can stay updated by visiting the project webpage at edu.nsw.link/AustralPS. You can also access the project's webpage using the QR code.



Contact us

If you have any queries or concerns about this project, please contact School Infrastructure:

Website: schoolinfrastructure.nsw.gov.au

Email: schoolinfrastructure@det.nsw.edu.au

Phone: 1300 482 651 (during business hours)



For a Translation and Interpreting Service call 131 450 and ask them to call the Department of Education – School Infrastructure on 1300 482 651.