

Ashtonfield Public School

Welcome pack



Welcome to your new learning spaces

The Ashtonfield Public School upgrade is now open and ready to use, delivering:



12 new permanent learning spaces



Upgrade to the library



Upgrade to the canteen



Upgrades to covered outdoor learning area (COLA)



Upgrade to staff and administration amenities

Thank you for your patience during construction. We are delighted to deliver this project for the Ashtonfield Public School community and hope you enjoy your new spaces.

Message from your Principal

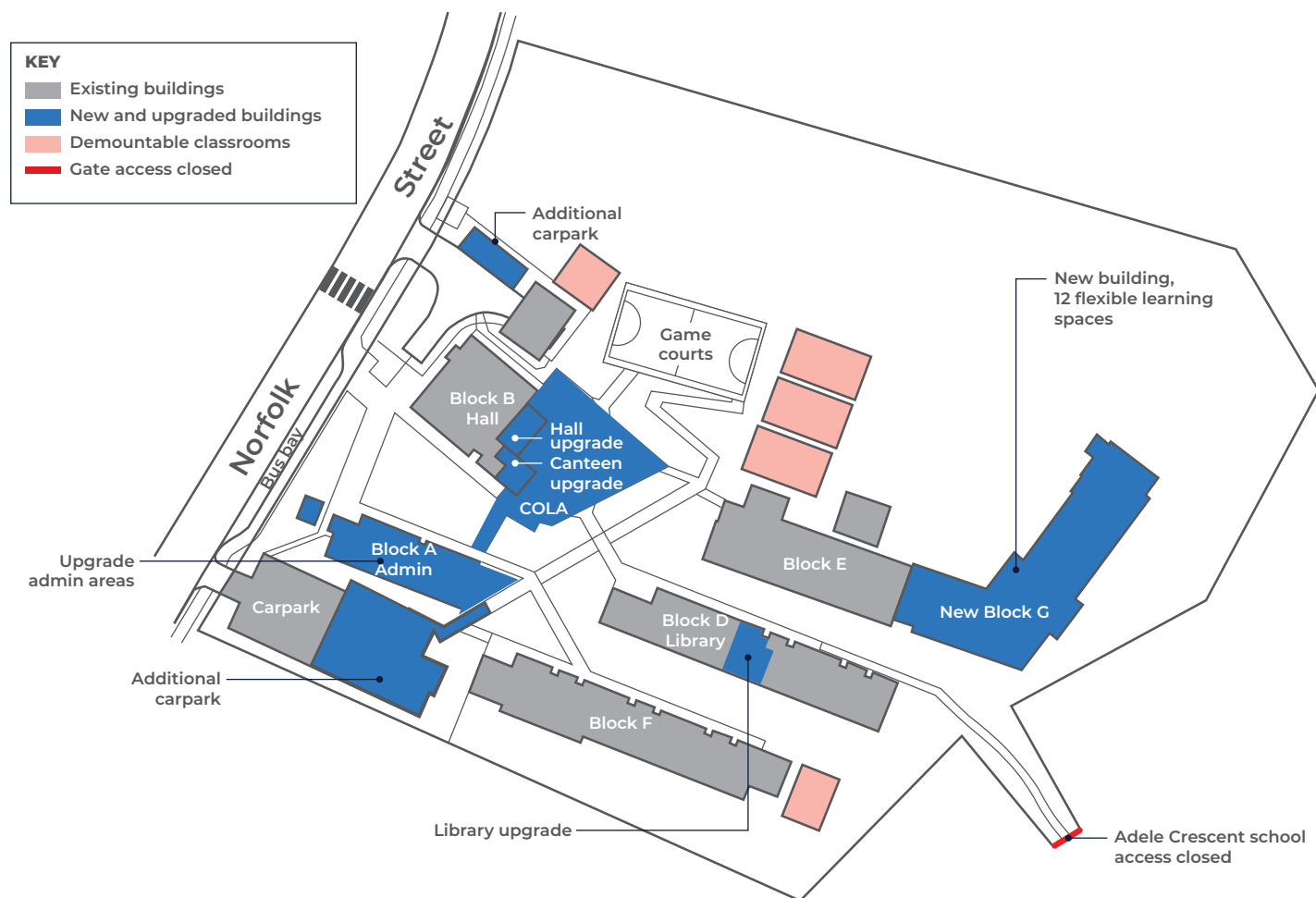
As Principal of Ashtonfield Public School, I am excited to welcome you to our school's stunning new upgrades to the administration building, library, school hall, canteen, and COLA. We are proud of our 12 new classrooms and the space they provide for flexible learning, and extremely excited to embrace new green areas for our students to run and play.

Our new learning spaces have been purposefully designed to enhance the teaching strategies and practices staff already employ on a regular basis. Flexible learning spaces, enabling the delivery of an integrated curriculum approach will safeguard students for future challenges including deep, authentic learning experiences. Within classrooms, effective collaborative teaching practices are centred on developing students' capacity to become successful learners.

We will utilise the new spaces to continue our commitment in developing highly literate and numerate students and the provision of high-quality educational opportunities for every child, every moment. We are well placed to ensure our students are future focused innovators, embracing technology with creative and critical thinking approaches.

I would like to thank students, staff, parents, and local community members for their patience during construction. I am sure you will be as pleased as we are with the outcome.

Melissa Scully
Principal



The Ashtonfield Story

One day there was a huge flood across the land. The Eagle swooped down over Wonnarua country to make sure everyone was ok. He saw Bluey pushing all the children through the river and helping them get to land. On the land was where the learning took place.

The students from Ashtonfield Public School were pulled from the river to learn, meet, and grow with each other. The adults and the children worked in harmony together so that no one was left behind, and the learning continued. Bluey continued to push students to do their best and thrive.

The Ashtonfield Story above was written by the students of Ashtonfield Public School Junior Aboriginal Education Consultative Group (JAECG), supported by our Aboriginal Education Teacher in 2021 as depicted on the lift shaft of the new building.

The JAECG students identified culturally significant aspects to the local area and collaboratively designed the artwork to illustrate the Ashtonfield Story. In the artwork the Eagle is overseeing the land and looking out for the little fish in the river, the children from Ashtonfield Public School.

The school's Positive Behaviour for Learning mascot 'Bluey' is the blue-tongue Lizard and on each side of the river are the learning spaces of Ashtonfield Public School. The lift shaft artwork is visible throughout the playground and is a culturally significant addition to Ashtonfield Public School.



Flexible learning environments

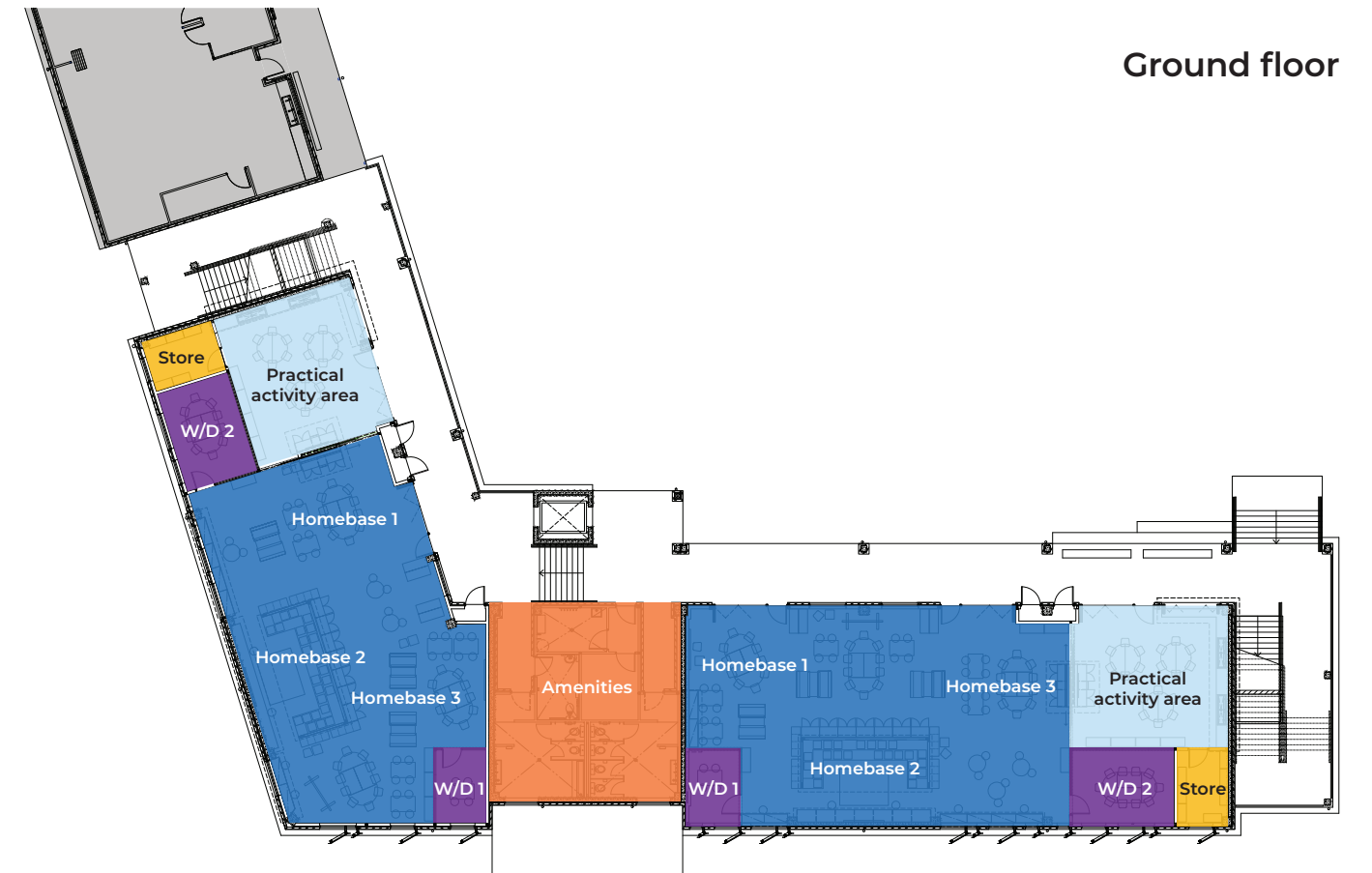
This exciting project has delivered new flexible learning spaces for the next generation of young minds at Ashtonfield Public School. The new learning environments offer flexibility where teachers can provide a variety of opportunities for student engagement.

These learning spaces:

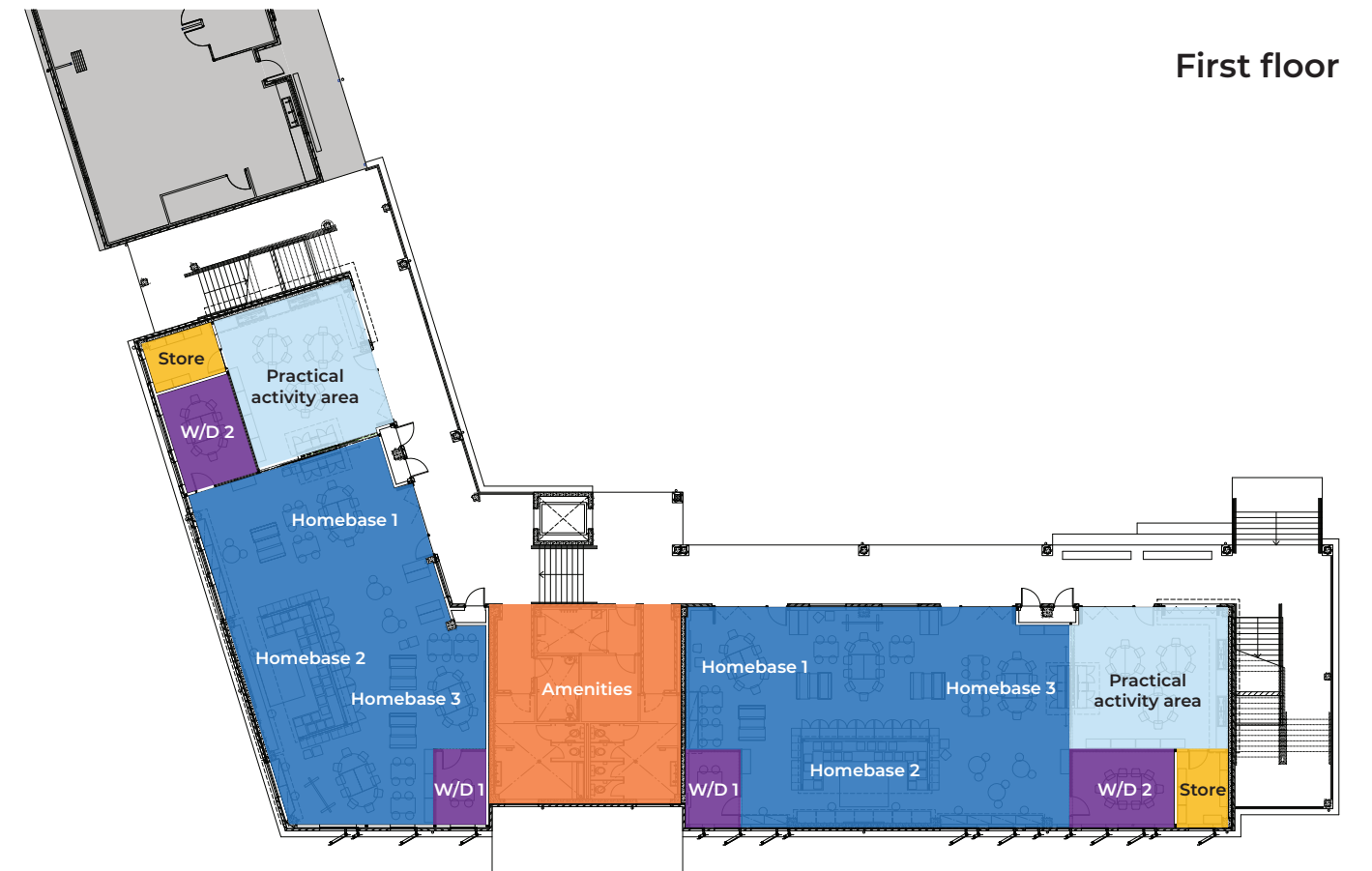
- are adaptable and will accommodate up to three class groups in each space.
- feature inclusive learning zones with flexible spaces, enabling students to engage in explicit teaching and embed technology in learning.
- provide opportunities to enhance skills in collaboration, communication, critical thinking, problem solving and creativity.



Floor plan



Ground floor



First floor

WD : Withdrawal room

Frequently asked questions

What has been delivered as part of the school upgrade?

The Ashtonfield Public School upgrade has delivered:

- a new permanent two storey building providing flexible learning spaces for 12 classes
- a new building including toilet amenities that allows for the temporary demountable buildings to be removed
- an upgrade to the staff and administration area
- an upgrade to the canteen with works on the covered outdoor learning area (COLA)
- an upgrade to the hall and library
- increase in staff parking with 14 additional spaces
- landscaping and walkways.

Have the school entrance locations changed?

The school entrances are currently under review as part of a Drop Off and Pick Up Management Plan (DOPUMP). Once completed, the plan will be submitted to Maitland City Council for consideration in accordance with the Development Application approval. This plan has been developed in consultation with the school, parents and a qualified traffic engineer.

Where do I drop off and pick up my child whilst the DOPUMP is being reviewed?

There are three drop off and pick up locations at the school including, the main entrance on Norfolk Street, the temporary gate also located on Norfolk Street and the gate by the school oval.

Will the Adele Crescent gate be reopened?

The Adele Crescent gate has been reviewed as part of the DOPUMP to be submitted to council. We will update the school and local community once the review is complete.

Will demountable classrooms be removed?

Yes, all current demountable classrooms will be removed from the school once the new school buildings are occupied.

What works are still to be completed?

The following works will be completed in late 2021:

- a new stair link between the new building and Block D
- removal of demountable classrooms
- landscaping
- completion of COLA concrete artworks.

Contact us

For more information about this project contact School Infrastructure NSW:

Website: schoolinfrastructure.nsw.gov.au

Email: schoolinfrastructure@det.nsw.edu.au

Phone: 1300 482 651

For information about school activities and operations, contact the school directly:

Principal: Melissa Scully

Website: ashtonfiel-p.schools.nsw.gov.au

Email: ashtonfiel-p.school@det.nsw.edu.au

Phone: 02 4934 3584