

Armidale Secondary College

Day 1 Term 1 2021



Welcome to your school

We're excited your new campus is ready for you to use.
The Armidale Secondary College includes:



79 new
classrooms



New
buildings



Specialist facilities to support
science, industrial arts,
hospitality, home economics
and agricultural studies



Hard and soft
landscaping and improved
sporting courts



Connections between indoor and
outdoor learning



Learning neighbourhoods with
flexible and adaptable spaces



Refurbished heritage
building

Thank you for your patience during construction. We are thrilled to deliver this project for your school community and hope you enjoy your new spaces.



Message from your Principal

It is a great pleasure to welcome students and parents to the new Armidale Secondary College campus. We are extremely proud of the new, purpose-built facilities that enable flexible, technology-enhanced, future-focused and collaborative teaching and learning for Armidale Secondary College students and staff.

We are a dynamic and inclusive school community who are committed to delivering quality learning experiences in an engaging and supportive environment where all students, as well as teachers, can realise their potential.

Our teaching and support staff are enthusiastic about the exciting possibilities the new innovative learning spaces offer in inspiring collaboration, creativity, communication and critical reflection.

I'd like to thank our community – students, staff, parents and local residents – for their patience during construction.

Carolyn Lasker
Principal



New learning neighbourhoods with innovative spaces

Armidale Secondary College focuses on the wellbeing of all students by the creation of learning neighbourhoods. These are grouped by year and curriculum and each have varied configurations.

The innovative learning environments at Armidale Secondary College offer flexibility where teachers can provide opportunities for student engagement. The learning spaces:

- are adaptable to accommodate small or large groups for demonstration or independent learning
- include learning centres with flexible spaces that allow students to use technology in a variety of settings
- provide opportunities to enhance skills in collaboration, communication, critical thinking, problem solving and creativity.

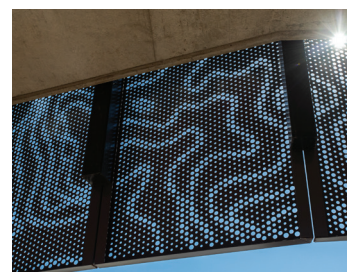
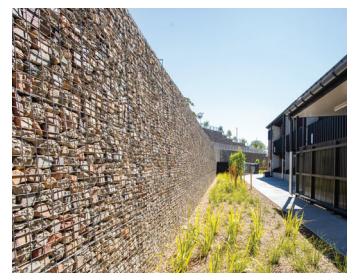


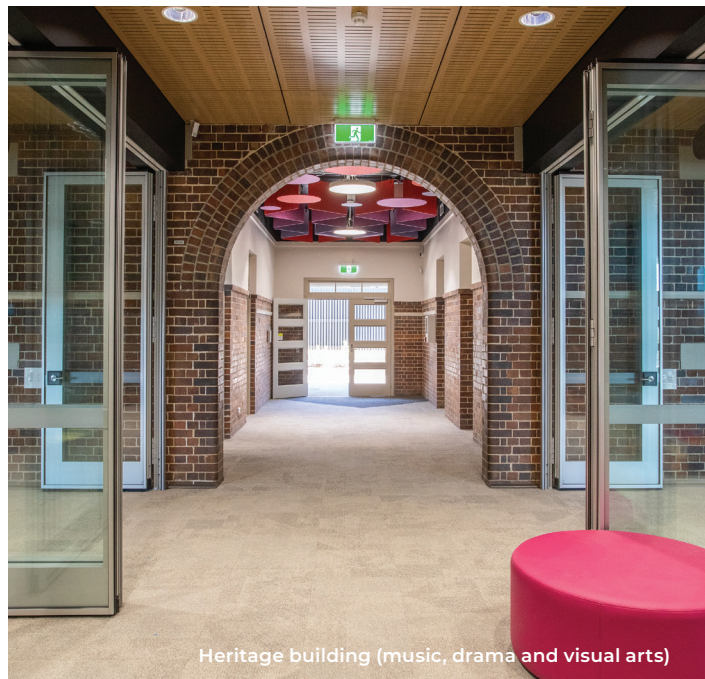
Specialist facilities

Armidale Secondary College has specialist facilities to support science, industrial arts, hospitality and agricultural studies. There are also learning spaces for visual and performing arts.

Local design features

The design of the new school incorporates the history of the two schools by repurposing materials and acknowledging place. Timber features in reclaimed wood tiered seating and rubble from the old school has been used for the large gabion retaining wall.





Frequently asked questions

What are the parking, staff parking and bus arrangements?

There are multiple entrances into Armidale Secondary College (refer to map overleaf for more details).

Gate 1 (vehicle access) on Butler Street will be accessible throughout the school day for visitors and students, with limited visitor and disabled parking. Staff can follow this road along to the staff carpark on the Kentucky Street side of the school.

There is a new bus stop on the corner of Butler and Mossman Streets, with pedestrian access via Gate 3. Gates 2, 4 and 5 also offer pedestrian access to the school.

When will the multi-purpose hall be ready?

Once the detailed design has been completed construction is expected to start in mid-2021, pending planning approvals. The standalone multi-purpose hall for Armidale will be available for use in 2022.

When will the community be able to view the new facilities?

The school will share information about opportunities for the community to view the new school facilities.

Contact us

For more information about this project contact School Infrastructure NSW:

Website: schoolinfrastructure.nsw.gov.au

Email: schoolinfrastructure@det.nsw.edu.au

Phone: 1300 482 651

For information about school activities and operations, contact the school directly:

Principal: Carolyn Lasker

Website: armidale-s.schools.nsw.gov.au

Email: armidale-s.school@det.nsw.edu.au

Phone: 02 6776 7400