

# Armidale Secondary College


A new high school is being delivered on the Armidale High School site. The new school will deliver:

 **79** new classrooms |  New buildings

 New innovative learning spaces  
for up to **1,500** students

 Specialist facilities to support science, industrial arts, hospitality and agricultural studies

 Attractive landscaping and design features that connect indoor and outdoor learning

 Learning neighbourhoods with flexible and adaptable spaces

 Improved sports facilities |  A new Multi-Purpose Hall



Artist's impression of the new Armidale Secondary College

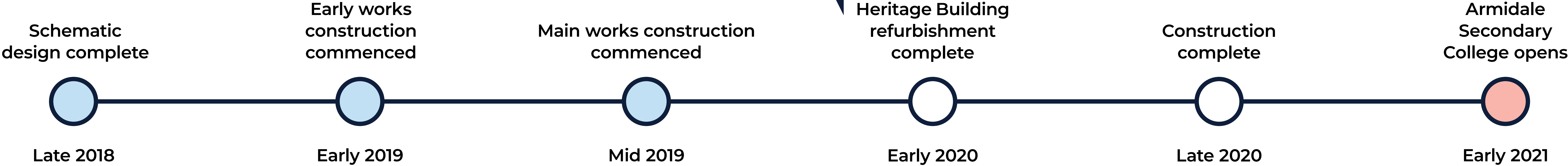
## Armidale Secondary College

For more information phone: 1300 482 651  
Email: [schoolinfrastructure@det.nsw.edu.au](mailto:schoolinfrastructure@det.nsw.edu.au)



# Timeline

We are here



Example of facilities we are building for students across NSW



Aerial view of Armidale Secondary College redevelopment January 2020



# Construction update

## Construction progress works currently underway

- Services fit-off to main build
- Installation of floor finishes
- External cladding to commence
- Commencement of internal and external glazing.



Aerial views of Armidale Secondary College redevelopment January 2020

## Upcoming construction progress works

- Commence soft landscaping works
- Installation of fixed joinery
- Connect permanent power to the buildings
- Completion of the external façade
- Completion of internal finishes to the main build.



## Armidale Secondary College

For more information phone: 1300 482 651  
Email: [schoolinfrastructure@det.nsw.edu.au](mailto:schoolinfrastructure@det.nsw.edu.au)



# A new Multi-Purpose Hall is being delivered

A new standalone Multi-Purpose Hall will be delivered as part of the redevelopment of Armidale Secondary College.

The Multi-Purpose Hall will replace the hall and performing arts space lost through the demolition of the original school, and will also house a new movement and fitness area.

## Location within the school

The siting of the new building will be close to the new car park at the south of the site.

## Benefits of the new facility

- An optimised, future-focused layout is provided with increased connectivity to the broader school.
- Additional learning facilities which will be complemented by the existing gymnasium.
- A separate Multi-Purpose Hall ensures the use of the existing DEN not impacted and provides greater versatility for the school community.

## Multi-Purpose Hall inclusions

- A generous hall space together with stage and retractable tiered seating for performances / school functions
- Storage rooms and areas to support performing capability
- Kitchen and servery
- Change rooms and amenities
- General learning areas and movement studio
- Two additional basketball courts

Forecast completion of the new Multi-Purpose Hall will be communicated to you once finalised.

## Armidale Secondary College

For more information phone: 1300 482 651  
Email: [schoolinfrastructure@det.nsw.edu.au](mailto:schoolinfrastructure@det.nsw.edu.au)



# Innovative learning spaces at Armidale Secondary College

Innovative learning prepares students across all curriculum areas and learning stages with skills and capabilities to thrive in a rapidly changing and interconnected world. It engages students based on their ability, interests and learning preferences and provides flexible, technology-rich teaching spaces for one-to-one, small groups and whole of class activities. Innovative learning spaces encourage collaborative learning between students and teachers.



## Space

- There are zones for different activities, with varied furniture and resources – such as booths, standing tables, studios and bean bags.
- Spaces can be connected by glass or sliding doors to extend the learning space.
- No front of classroom.
- Spaces are designed to be shared by multiple classes.



## Students

- Students have the ability to move around the learning space to encourage collaborative learning.
- Students working across a range of projects simultaneously.
- Students engaged in hands on learning, building and testing.



## Teachers

- Movement around the learning space rather than the teacher being at the front of the room.
- Teachers plan learning together, for example in stage or faculty teams.
- Teachers teaching together to better meet the needs of students.



## Learning

- Personalised learning, so each student is learning at their own level and pace.
- Students learning in large groups, small groups or individually.
- Students are working towards the same project in different subject areas, encourages cross disciplinary learning.



## Technology

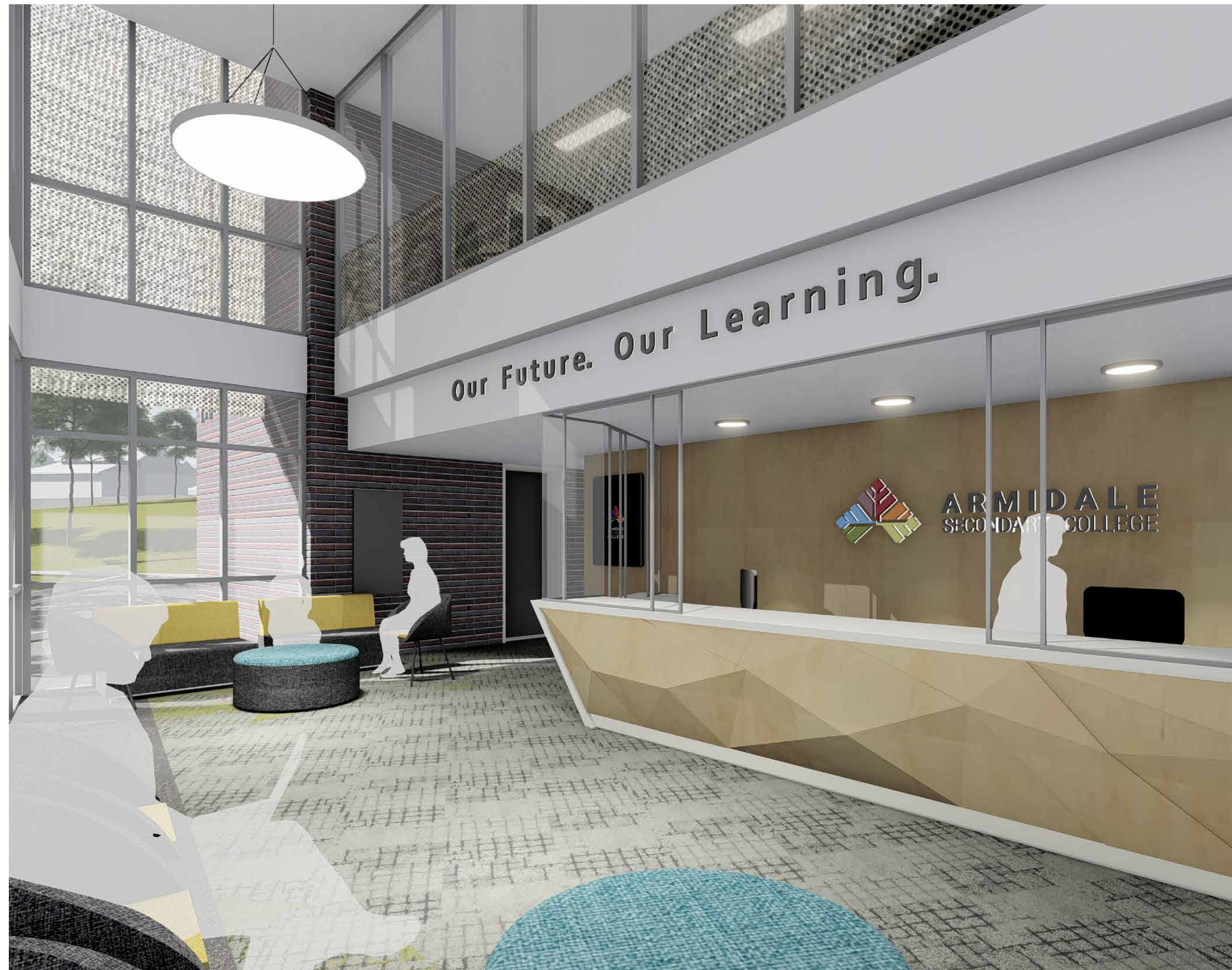
- Technology integrated into the space to extend learning.
- Accessibility of technology to suit different activities at point of need, for example filming and recording equipment.
- WiFi accessible across all learning areas.

## Armidale Secondary College

For more information phone: 1300 482 651  
Email: [schoolinfrastructure@det.nsw.edu.au](mailto:schoolinfrastructure@det.nsw.edu.au)



# Artist impressions



Artist impression of the new reception area



Artist impression of the new library

## Armidale Secondary College

For more information phone: 1300 482 651  
Email: [schoolinfrastructure@det.nsw.edu.au](mailto:schoolinfrastructure@det.nsw.edu.au)





Artist impression of tiered seating



Artist impression of science lab



Artist impression of kitchen area



Artist impression of staff study space

## Armidale Secondary College

For more information phone: 1300 482 651  
Email: [schoolinfrastructure@det.nsw.edu.au](mailto:schoolinfrastructure@det.nsw.edu.au)