

# Project overview

The Forest High School is part of the re-zoning and planning framework for Frenchs Forest to create a new town centre for the community. The Forest High School will be relocated to a portion of 187 Allambie Road, Allambie Heights. This is located within the current intake area for The Forest High School.

Student learning will continue at the current school site until the new facilities are built.

The project is finalising the State Significant Development (SSD) application and will lodge this with the Department of Planning and Environment (DPE) in the coming weeks.



Modern flexible learning spaces  
for up to **1500** students



New library, canteen and  
administration spaces



Multipurpose sports  
and performance hall



New outdoor sports courts,  
landscaped recreation and outdoor  
learning spaces



Artist impression of the aerial view of the school from Allambie Road

## The Forest High School relocation

For more information phone: 1300 482 651  
Email: [schoolinfrastructure@det.nsw.edu.au](mailto:schoolinfrastructure@det.nsw.edu.au)



# The high school features



Visual arts, wood and metalwork workshops



Innovative design principles and focus on accessibility and sustainability (5 Star Green Star accreditation)



Library with senior study spaces and meeting areas



Technology-rich teaching and learning spaces



Performance spaces, fitness and movement studios



Green open spaces, gardens and landscaping across the school



Hospitality and kitchen spaces



Outdoor learning areas



Learning spaces for specialist support classes



Sports courts, playing field

## The Forest High School relocation

For more information phone: 1300 482 651  
Email: schoolinfrastructure@det.nsw.edu.au

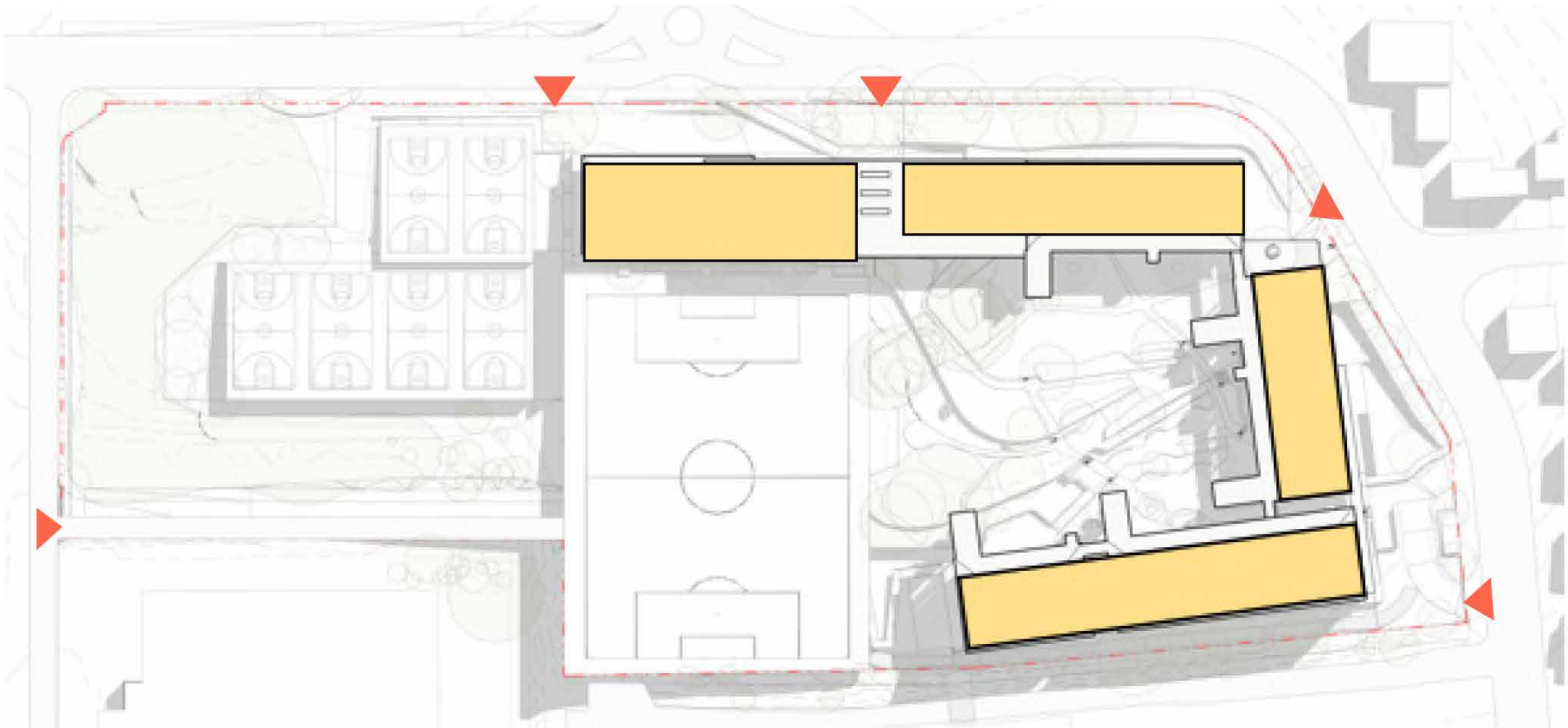


# Design developments

The Department of Education continually reviews the development of design for schools at every stage of a project to identify opportunities for change that can provide better outcomes for students and school communities.

The revised design for The Forest High School has taken into consideration community and school feedback with a view to improve student movement around the site and connection with outdoor space.

A Department of Education initiative to develop The Forest High School as a centre of excellence in line with broader inclusive education policies has further contributed to the revised design.



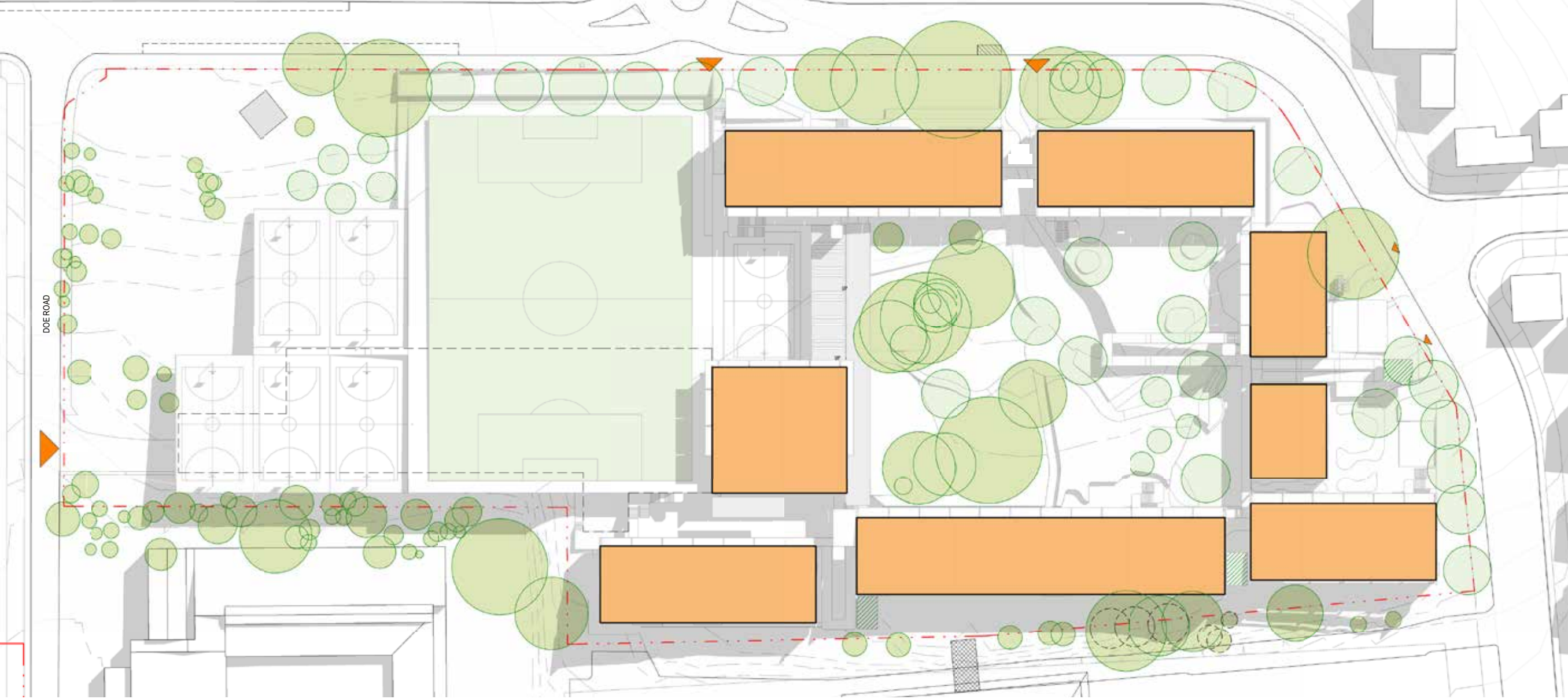
## Previous design

- 4-storey buildings
- U-shaped design around central courtyard
- Central courtyard open to the sports courts and bushland to the west
- Loading dock off Allambie Road on the east side of the site

The revised low-rise design with buildings lowered from 4 to 2 storeys reduces the visual impact of the school along Allambie Road. Architectural studies show the reduction in building height also significantly improves travel time around the site.

A mix of ramps, stairs and lifts throughout the school allows students and staff to choose different modes of travel and the looped design enhances travel between furthest points of the site.

Multiple undercover and cross courtyard routes to different parts of the school further improves movement around the site and maintains maximum connection to outdoor space.



## Revised design

- Maximum 2-storey buildings
- Buildings configured around the central courtyard to improve accessibility
- Central courtyard maintains connection with sports courts and bushland
- Gymnasium relocated to overlook the sports field
- Configuration of sports courts changed and shifted west
- Additional sports court added to central courtyard
- Loading dock moved to staff carpark

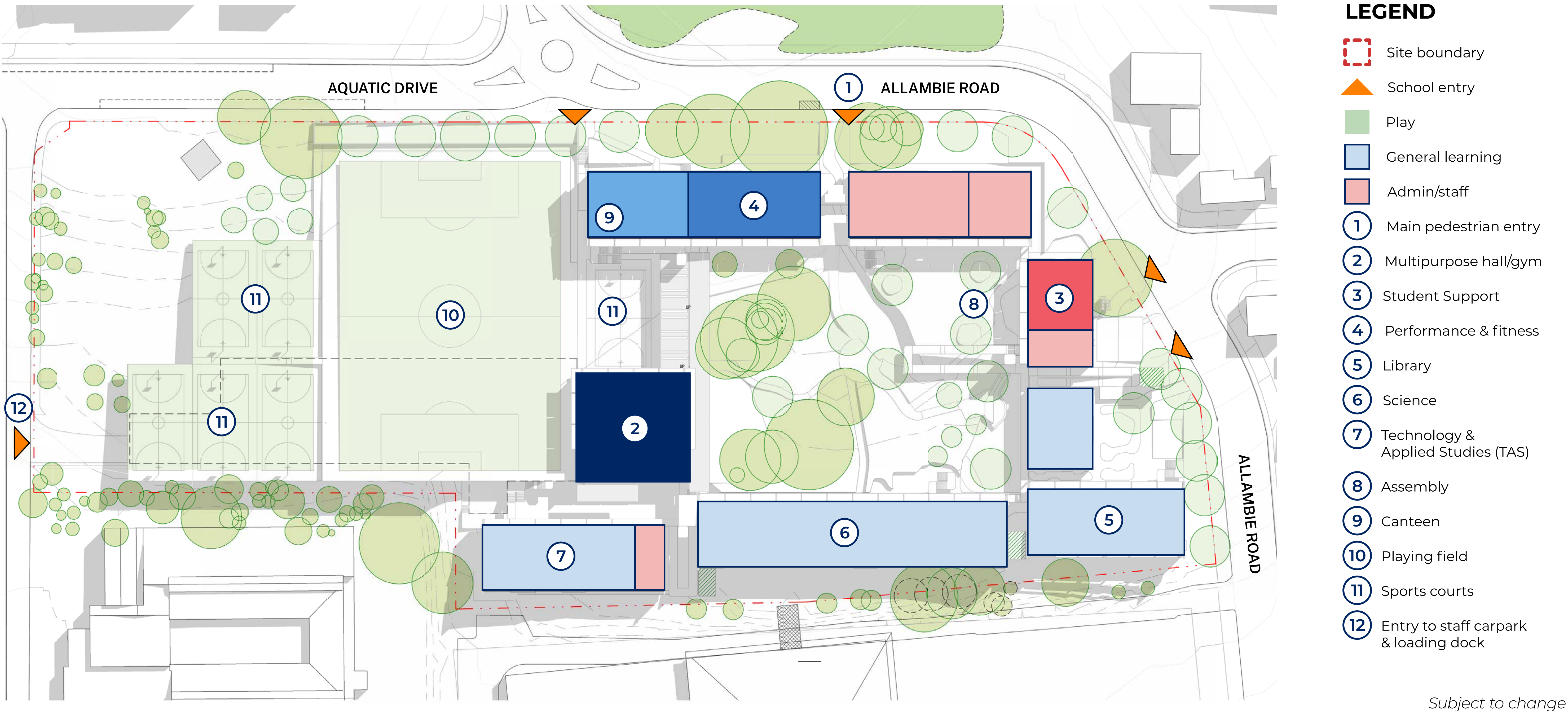
*Subject to change*

## The Forest High School relocation

For more information phone: 1300 482 651  
Email: [schoolinfrastructure@det.nsw.edu.au](mailto:schoolinfrastructure@det.nsw.edu.au)



# Revised site layout



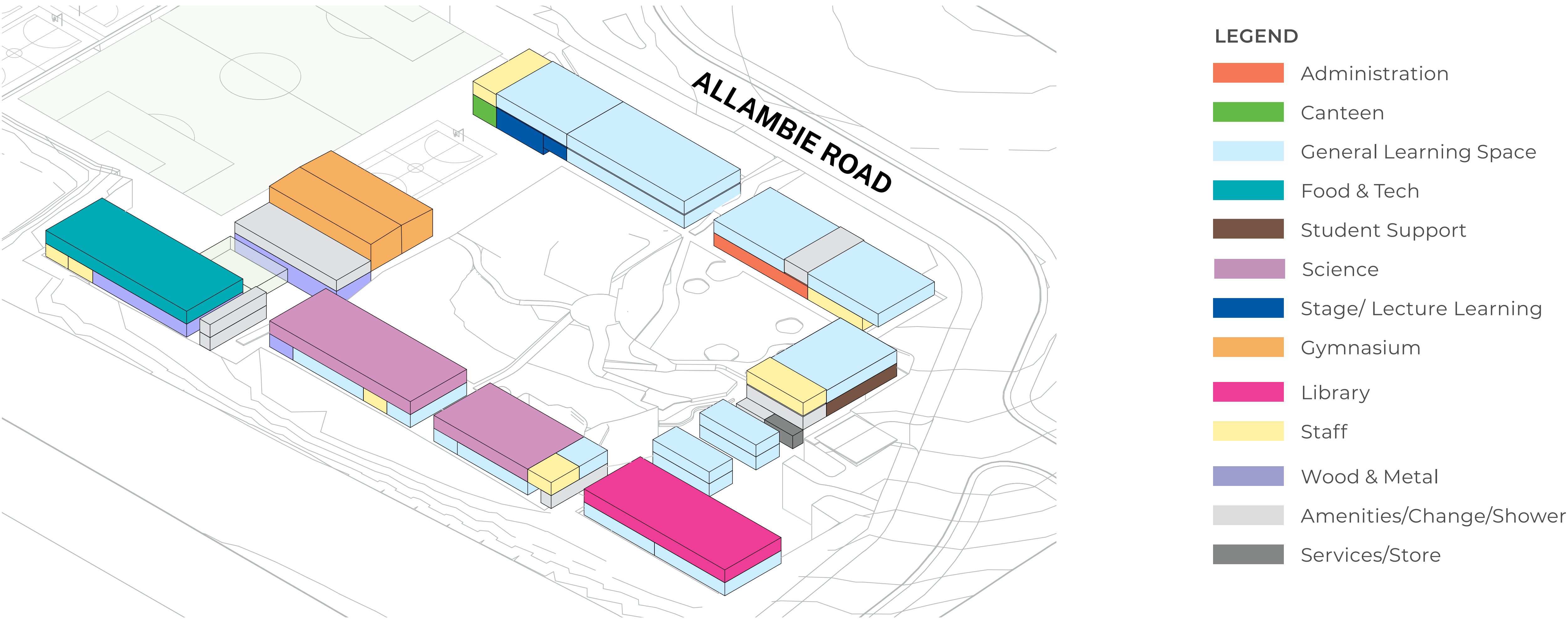
## The Forest High School relocation



# Layout of facilities

The arrangement of the school is a series of buildings that wrap the four sides of a central courtyard. The COLA and a sports court lead from this central courtyard to the main playing field and sports courts to the west of the site.

The layout of learning spaces and facilities have been determined in line with the department’s Educational Facilities Standards and Guidelines and with consideration of spatial requirements, site constraints, access and operational needs of the high school. Learning spaces throughout the school are grouped by subject area and the main ground floor looped walkway connects core subject zones.



*Subject to change*

## The Forest High School relocation



# Proposed School Transport Infrastructure Plan

We understand that transport is a key concern for the community. Our aim is to deliver a cutting edge educational facility while working to mitigate any potential traffic impacts of this project on the surrounding area and support active modes of travel.

Proposed mitigations and infrastructure are outlined in the diagram and include:

- New traffic lights at the Aquatic Drive/ Allambie Road intersection
- New pedestrian crossing at the Rodborough Road/ Allambie Road intersection
- Shared path for pedestrian and cyclists along Aquatic Drive and Allambie Road
- Pedestrian refuge on the eastern side of the school on Allambie Road
- More than 120 weather protected bicycle spaces and 60 scooter spaces to support active transport to school
- Loading dock entry via Arranounbai School driveway
- Staff parking under the playing field with one space per teacher
- Kiss 'n drop zones including covered off-street and on-street support unit drop-off zones.



## The Forest High School relocation

For more information phone: 1300 482 651  
Email: schoolinfrastructure@det.nsw.edu.au



# Artist impressions



Artist impression of the main pedestrian entry on Allambie Road to the north of the site



Artist impression of the side pedestrian entry on Allambie Road

## The Forest High School relocation

For more information phone: 1300 482 651  
Email: [schoolinfrastructure@det.nsw.edu.au](mailto:schoolinfrastructure@det.nsw.edu.au)



# Connection with outdoor spaces

The new school site owes its unique character to its surroundings and connections to nature and offers distant views over Allambie Heights, the Garigal National Park, the Pacific Ocean, and the Sydney CBD.

The school has been designed to enhance views to the bush, giving students, teachers and visitors an opportunity to glance over the treetops to connect with nature. It seeks to retain as many mature trees and bushland areas as possible while also providing all the needs of a modern high school.

The revised design of the school has considered maximising connection with outdoor spaces. The heart of the campus is imagined within the central open courtyard, next to the large existing trees. The sports field, sporting courts and the outdoor learning spaces throughout the site establish a strong connection to nature.



Artist impression of the aerial view of the school. Subject to change.



Artist impression of the COLA and sports field. Subject to change.

## The Forest High School relocation

For more information phone: 1300 482 651  
Email: [schoolinfrastructure@det.nsw.edu.au](mailto:schoolinfrastructure@det.nsw.edu.au)



# Next steps

As part of the State Significant Development (SSD) application, an Environmental Impact Statement (EIS) is being prepared for lodgement with the Department of Planning and Environment (DPE). The EIS contains technical studies to consider matters such as traffic, noise, operations, ecology, bushfire and construction management. The technical studies involve research, site investigations, surveys, assessments, data analysis and community consultation.

Some of the technical studies undertaken for the EIS include:

- Design Analysis
- Traffic and Transport
- Social Impact Analysis
- Noise and Vibration
- Aboriginal Assessment
- Ecological Sustainable Development
- Construction Management
- Hydraulic
- Contamination
- Waste Management
- Stormwater Management
- Accessibility Assessment

If you would like to provide feedback or ask questions about the project prior to SSD submission, please contact us via email at [schoolinfrastructure@det.nsw.edu.au](mailto:schoolinfrastructure@det.nsw.edu.au) or phone 1300 482 651.

Following the lodgement of the SSD application, the project will be placed on public exhibition by the Department of Planning and Environment (DPE). During this time, you can provide a formal submission by using the 'Make a Submission' link on the project page of the DPE website. More information about this process: [pp.planningportal.nsw.gov.au/major-projects](https://pp.planningportal.nsw.gov.au/major-projects).

## Timeline

