



20m

Crack damage to the concrete edging of the footpath.



<p>20m</p>	<p>General view of the footpath and Council strip.</p> 
<p>23m</p>	<p>Crack damage to the footpath.</p> 



25m

Crack damage to the layback and driveway crossover.





25m

Crack damage to the layback and driveway crossover.





30m	<p>General view of the footpath and Council strip.</p>  A wide-angle photograph showing a concrete footpath running alongside a road. To the left of the footpath is a grassy area with a metal fence. To the right is a paved road with a white line. The scene is outdoors with trees and a clear sky in the background.
32m	<p>Crack damage to the footpath.</p>  A close-up photograph of the concrete footpath, showing a significant crack running across the surface. The crack is deep and runs diagonally across the frame. The surrounding area is grassy and there are some shadows cast on the path.

32m

Views of the telegraph pole.



40m	<p>General view of the footpath and Council strip.</p> 
42m	<p>Crack damage to the footpath.</p> 

45m	<p>View of the inspection lid to the footpath.</p> 
50m	<p>General view of the footpath and Council strip.</p> 

55m

Views of the cracked section of the footpath.





55m	<p>Views of the cracked section of the footpath.</p> 
60m	<p>View of the inspection lids.</p> 

60m

General view of the footpath and Council strip.



65m

Views of the streetlight and bus stop sign.



65m	<p>Views of the streetlight and bus stop sign.</p> 
70m	<p>General view of the footpath and Council strip.</p> 

80m

General view of the footpath and Council strip.



85m

Views of the telegraph pole and sign.



90m	<p>General view of the footpath and Council strip.</p> 
100m	<p>General view of the footpath and Council strip.</p> 

105m

Views of the telegraph pole and streetlight.



109m	<p>Crack damage to the footpath.</p> 
110m	<p>General view of the footpath and Council strip.</p> 



113m	<p>Crack damage to the footpath.</p> 
115m	<p>Crack damage to the driveway crossover and inspection lid.</p> 



120m

Views of the driveway crossover showing various cracks to the layback.





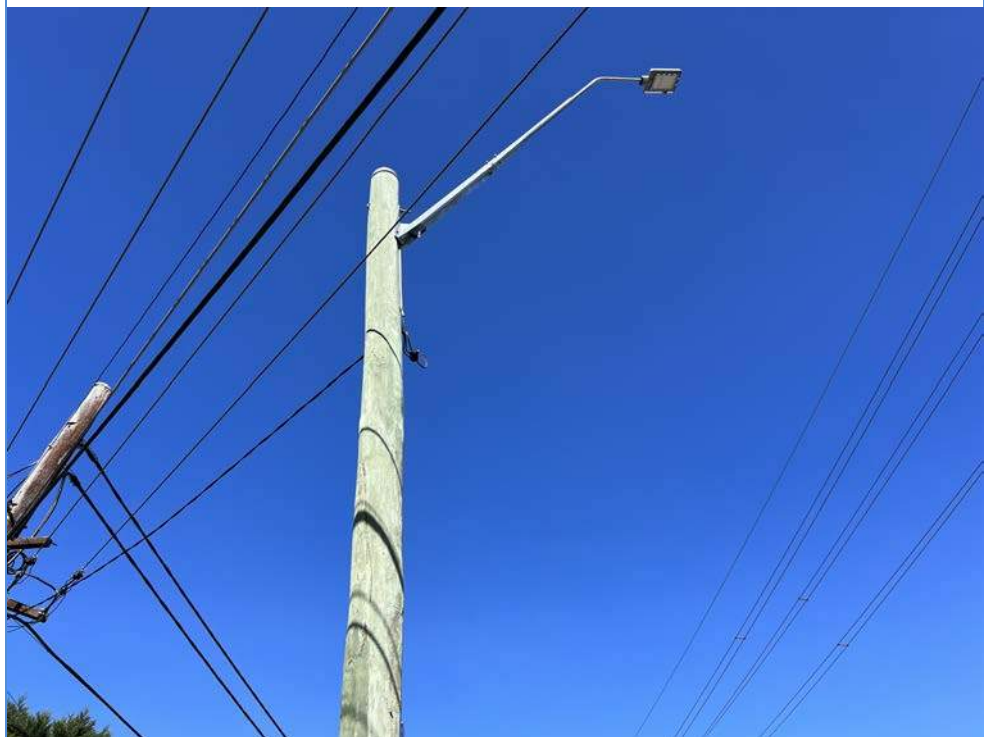
120m

Views of the driveway crossover showing various cracks to the layback.



125m

Views of the streetlight.

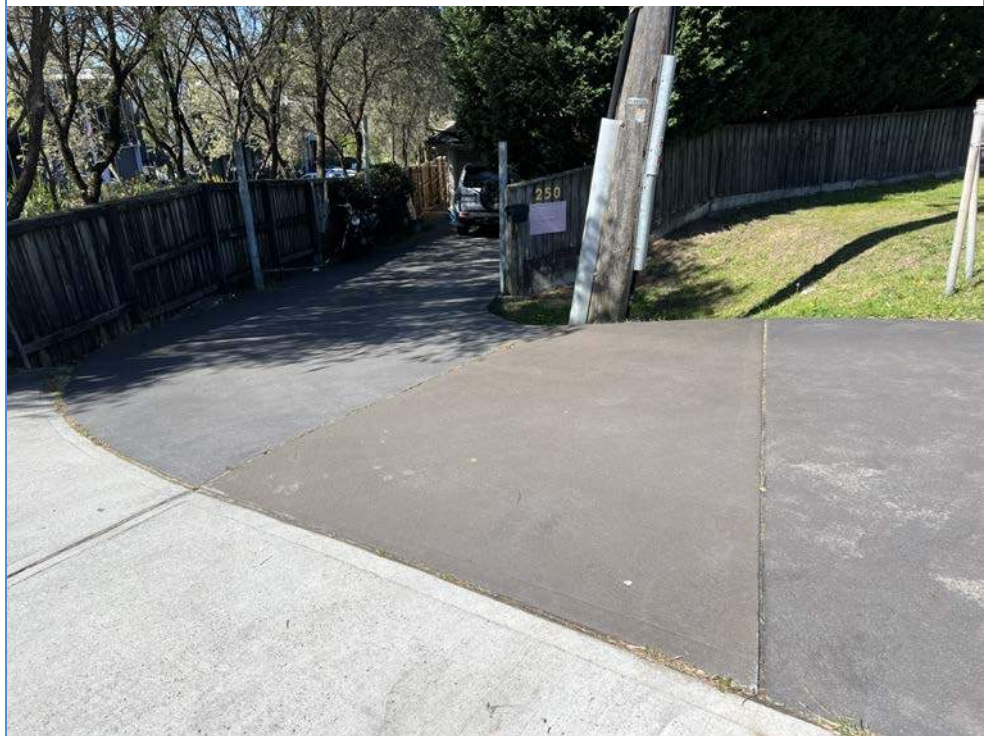


126m

View of the inspection lids and driveway crossover.



Views of the driveway crossover servicing number 250 Allambie Road, Allambie Heights.



Telegraph pole fronting 250 Allambie Road is leaning.



Telegraph pole fronting 250 Allambie Road is leaning.



<p>135m</p>	<p>Leaning street signs.</p> 
<p>130m</p>	<p>General view of the footpath and Council strip.</p> 



138m

Views of the inspection pit.



137m	<p>Crack damage to the footpath.</p> 
140m	<p>General view of the footpath and Council strip.</p> 

150m	<p>General view of the footpath and Council strip.</p> 
158m	<p>Crack damage to the footpath.</p> 



Crack damage to the layback servicing number 248 Allambie Road, Allambie Heights.





Crack damage to the layback servicing number 248 Allambie Road, Allambie Heights.



View of the driveway crossover servicing number 248 Allambie Road, Allambie Heights.



160m

General view of the footpath and Council strip.



Views of the guardrail fronting number 248 Allambie Road, Allambie Heights.



170m	<p>General view of the footpath and Council strip.</p> 
175m	<p>View of the street sign.</p> 

180m

General view of the footpath and Council strip at the end point.



The following inspection is of the road surface, kerb and gutter to the eastern side of Allambie Road starting at Arnhem Road, heading north, and finishing at the intersection of Aquatic Drive.





0m

General views of the road surface, kerb and gutter at the start point.





0m	<p>Crack damage noted to the road surface at the start point.</p>  A photograph showing a road surface with a green-painted section. A white line marking is visible on the green surface, and a crack is running along the edge of the green section. The surrounding asphalt is dark grey.
0m	<p>Crack damage to the kerb and gutter at the start point.</p>  A photograph showing a concrete kerb and gutter. The kerb is cracked and crumbling. The gutter is filled with grass and debris. The road surface is dark grey asphalt.