



90m

General views of the road surface, kerb and gutter.





90m

General views of the road surface, kerb and gutter.





90m

Crack damage to the kerb and gutter.





100m

General views of the road surface, kerb and gutter.





100m

General views of the road surface, kerb and gutter.





110m

General views of the road surface, kerb and gutter.







110m

General views of the road surface, kerb and gutter.





120m

General views of the road surface, kerb and gutter.





120m

General views of the road surface, kerb and gutter.





120m

General views of the road surface, kerb and gutter.







130m

General views of the road surface, kerb and gutter.





130m

General views of the road surface, kerb and gutter.





130m

Crack damage to the kerb and gutter.





130m

Crack damage to the kerb and gutter.





140m

General views of the road surface, kerb and gutter.







140m

General views of the road surface, kerb and gutter.







140m

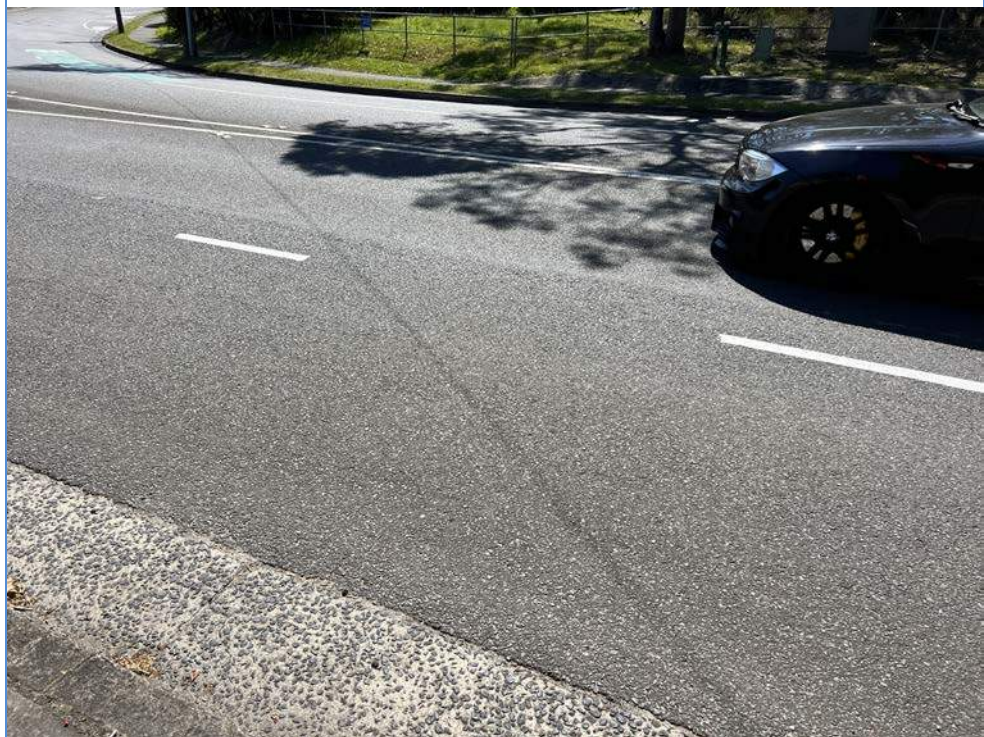
General views of the road surface, kerb and gutter.





150m

General views of the road surface, kerb and gutter.







150m

General views of the road surface, kerb and gutter.





160m

General views of the road surface, kerb and gutter.





160m

General views of the road surface, kerb and gutter.







160m

Crack damage to the kerb and gutter.





170m

General views of the road surface, kerb and gutter.





170m

General views of the road surface, kerb and gutter.





170m

General views of the road surface, kerb and gutter.







170m

Crack damage noted to the road surface.





170m

Crack damage noted to the kerb and gutter.





180m

General views of the road surface, kerb and gutter.





180m

General views of the road surface, kerb and gutter.







180m

Crack damage to the kerb and gutter.





190m

General views of the road surface, kerb and gutter.





190m

General views of the road surface, kerb and gutter.





190m

General views of the road surface, kerb and gutter at the end point.





190m

Crack damage to the kerb and gutter.





190m

Crack damage to the kerb and gutter.





The following inspection is of the footpath and Council strip to the eastern side of Allambie Road starting at the intersection of Aquatic Drive and Allambie Road and heading in a southerly direction towards the end point at Arnhem Road, Allambie Heights.



0m

General view of the footpath and Council strip looking from the starting point at the intersection of Allambie Road and Aquatic Drive, Allambie heights.





3m	<p>View of the inspection lid to the Council strip.</p> 
10m	<p>General view of the footpath and Council strip.</p> 



15m

Views of the services and inspection lids adjoining the footpath.







15m

Views of the services and inspection lids adjoining the footpath.





15m

Views of the services and inspection lids adjoining the footpath.

