

General views of the telegraph pole at the end point.





The following inspection is of the road surface, kerb and gutter to the western side of Allambie Road starting at the intersection of Arnhem Road and heading towards the intersection of Aquatic Drive at the end point.





0m

General views of the road surface, kerb and gutter at the start point.





0m

Various cracks to the kerb and gutter at the start point.







0m

Various cracks to the kerb and gutter at the start point.







10m

General views of the road surface, kerb and gutter.







10m

General views of the road surface, kerb and gutter.







10m

Crack damage to the kerb and gutter.







10m

Crack damage to the kerb and gutter.





20m

General views of the road surface, kerb and gutter.



20m

General views of the road surface, kerb and gutter.







20m

Various cracks to the kerb and gutter.







20m

Various cracks to the kerb and gutter.





30m

General views of the road surface, kerb and gutter.



30m

General views of the road surface, kerb and gutter.







30m

Various cracks to the road surface.







30m

Various cracks to the kerb and gutter.





30m

Various cracks to the kerb and gutter.





40m

General views of the road surface, kerb and gutter.





40m

General views of the road surface, kerb and gutter.







40m

Various cracks to the road surface.







40m

Various cracks to the road surface.



50m

General views of the road surface, kerb and gutter.





50m

General views of the road surface, kerb and gutter.







50m

Various cracks throughout the road surface.







50m

Various cracks throughout the road surface.





50m

Various cracks to the kerb and gutter.





60m

General views of the road surface, kerb and gutter.





60m

General views of the road surface, kerb and gutter.







60m

Various cracks to the road surface.







60m

Various cracks to the road surface.





70m

General views of the road surface, kerb and gutter.





70m

General views of the road surface, kerb and gutter.





70m

Various cracks to the road surface.







70m

Various cracks to the road surface.





70m

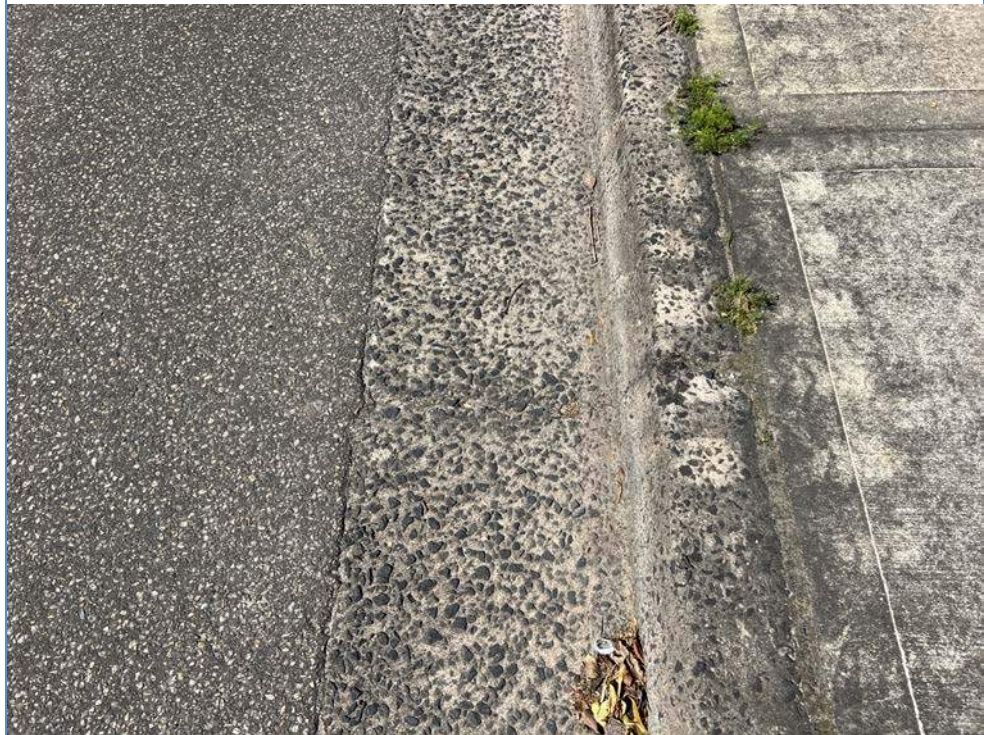
Cracks to the kerb and gutter.





70m

Cracks to the kerb and gutter.







80m

General views of the road surface, kerb and gutter.





80m

General views of the road surface, kerb and gutter.





80m

Crack damage to the road surface.

