

Views to the road surface of Allambie Road at Sunlea Place,  
Allambie Heights.





Views to the road surface and median strip of Allambie Road to the south of Sunlea Place, Allambie Heights.





Views to the road surface and median strip of Allambie Road to the south of Sunlea Place, Allambie Heights.





Views to the road surface and median strip of Allambie Road to the south of Sunlea Place, Allambie Heights.





Views of the footpath to the south of Sunlea Place, Allambie Heights.





Views of the footpath to the south of Sunlea Place, Allambie Heights.





Views of the bus stop to the eastern side of Allambie Road, opposite number 187 Allambie Road, Allambie Heights.





Views of the bus stop to the eastern side of Allambie Road, opposite number 187 Allambie Road, Allambie Heights.





Views of the bus stop to the eastern side of Allambie Road, opposite number 187 Allambie Road, Allambie Heights.



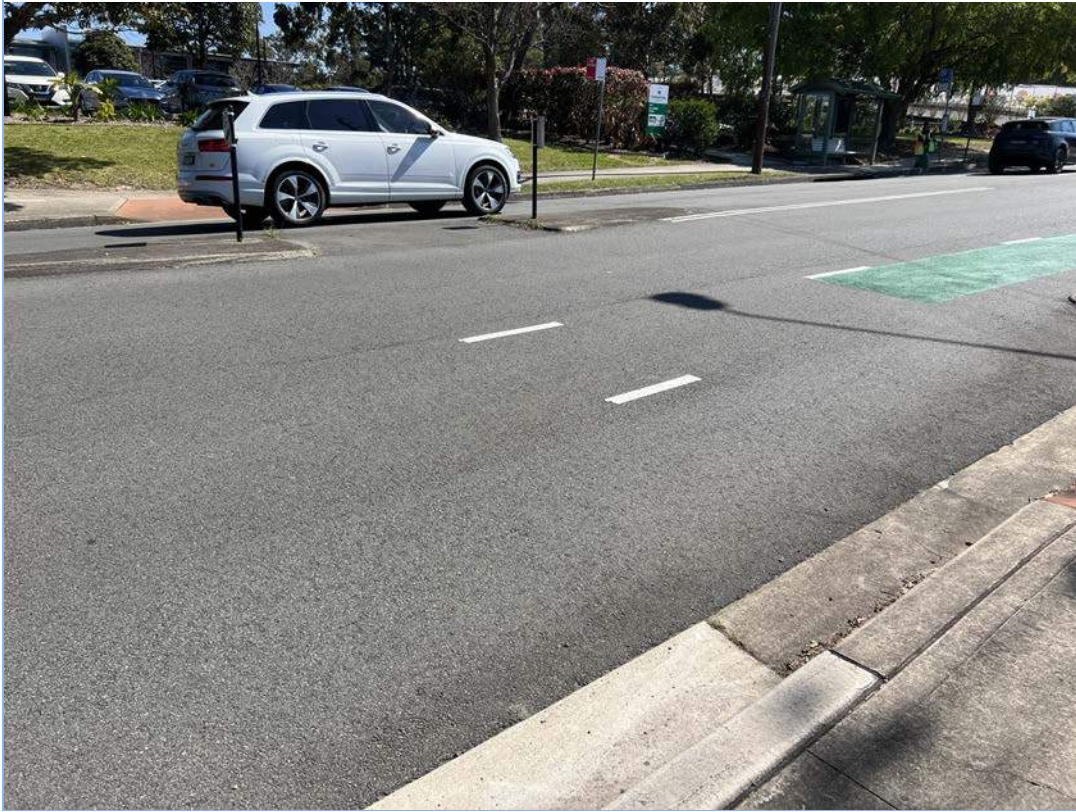


Views of the road surface fronting the bus stop.





Views of the road surface fronting the bus stop.





Views of the kerb and gutter fronting the bus stop.





Views of the kerb and gutter fronting the bus stop.





View of the bus stop street signs.





Views of the footpath to the south of the bus stop.





Crack damage to the kerb and gutter fronting the bus stop.





Crack damage to the kerb and gutter fronting the bus stop.







Crack damage to the footpath to the north of the bus stop.





Views of the streetlight and telegraph pole at the intersection of Sunlea Place and Allambie Road, Allambie Heights.





Crack damage noted to the kerb and gutter to the south side of Sunlea Place, Allambie Heights.





Crack damage noted to the kerb and gutter to the south side of Sunlea Place, Allambie Heights.





Crack damage noted to the kerb and gutter to the south side of Sunlea Place, Allambie Heights.



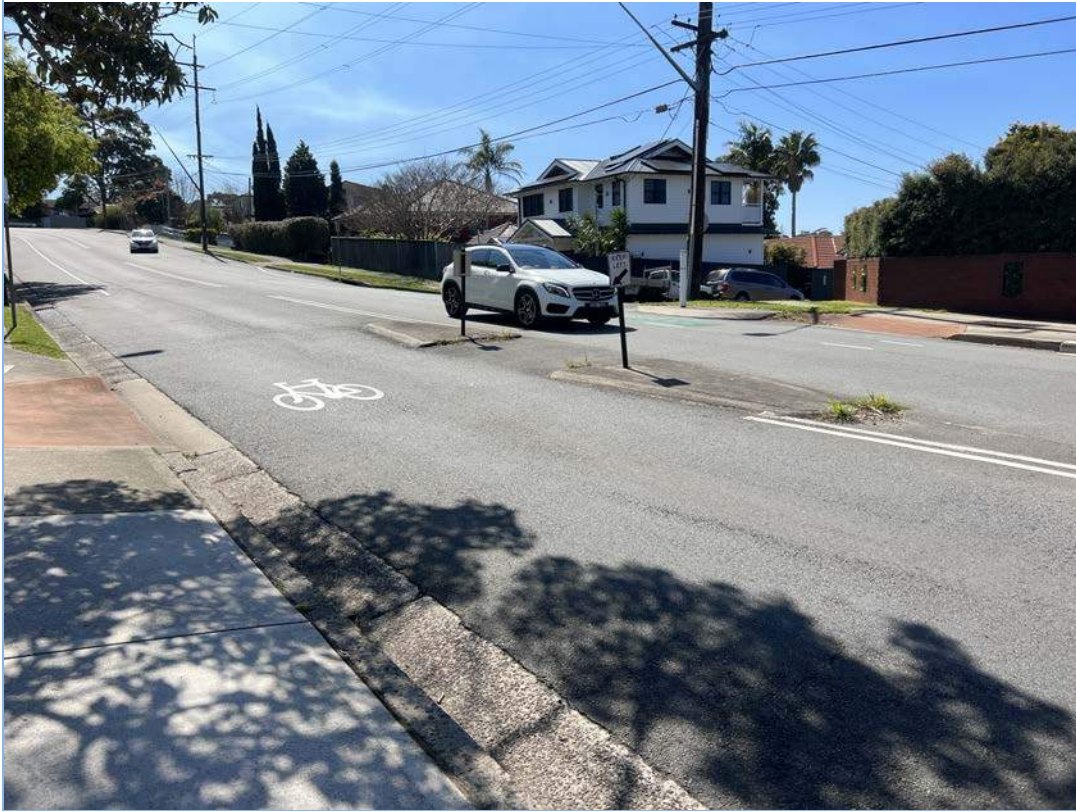


Views of the road surface to the western side opposite the bus stop.





Views of the road surface to the western side opposite the bus stop.







Crack damage to the road surface opposite the bus stop.





Views of the driveway crossover opposite the bus stop servicing number 187 Allambie Road, Allambie Heights.







Views of the driveway crossover opposite the bus stop servicing number 187 Allambie Road, Allambie Heights.



Crack damage to the layback and gutter servicing number 187 Allambie Road, Allambie Heights.





Damage noted to the street sign to the south of the driveway servicing number 187 Allambie Road, Allambie Heights.







Views of the stormwater drain, kerb and gutter to the south of the driveway servicing number 187 Allambie Road, Allambie Heights.





Views of the stormwater drain, kerb and gutter to the south of the driveway servicing number 187 Allambie Road, Allambie Heights.





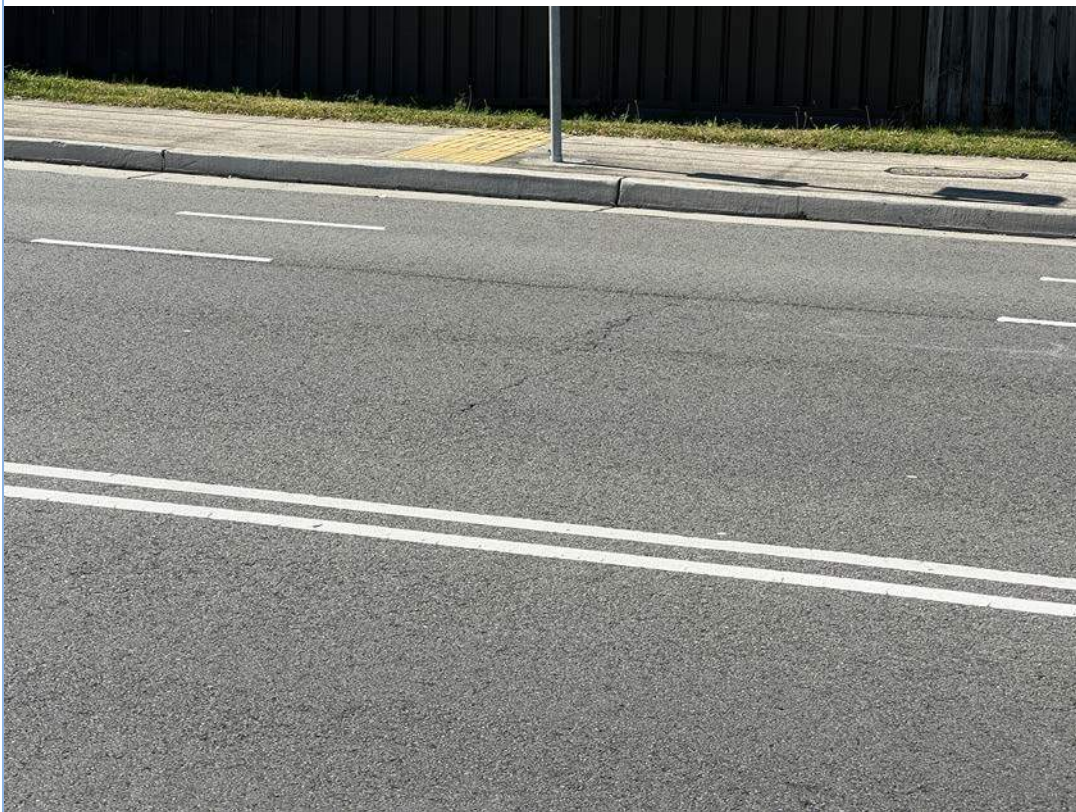
Crack damage throughout the road surface to the south of the driveway servicing number 187 Allambie Road, Allambie Heights.







Crack damage throughout the road surface to the south of the driveway servicing number 187 Allambie Road, Allambie Heights.





Views of the footpath between the driveway servicing number 187 Allambie Road and the bus stop to the western side of Allambie Road, Allambie Heights.







Views of the footpath between the driveway servicing number 187 Allambie Road and the bus stop to the western side of Allambie Road, Allambie Heights.





Views of the footpath between the driveway servicing number 187 Allambie Road and the bus stop to the western side of Allambie Road, Allambie Heights.





Views of the bus stop opposite Sunlea Place and Allambie Road, Allambie Heights.





Views of the bus stop opposite Sunlea Place and Allambie Road, Allambie Heights.







Crack damage to the footpath, kerb and gutter fronting the bus stop.





Crack damage to the footpath, kerb and gutter fronting the bus stop.





Crack damage to the footpath, kerb and gutter fronting the bus stop.

