

Views of the inspection lid on the south side of Arnhem Road, Allambie Heights.



Damage noted to the inspection lid concrete surround on the south side of Arnhem Road, Allambie Heights.





Crack damage to the footpath on the south side of Arnhem Road, Allambie heights.



Views of the kerb and footpath on the north side of Arnhem Road, Allambie Heights.

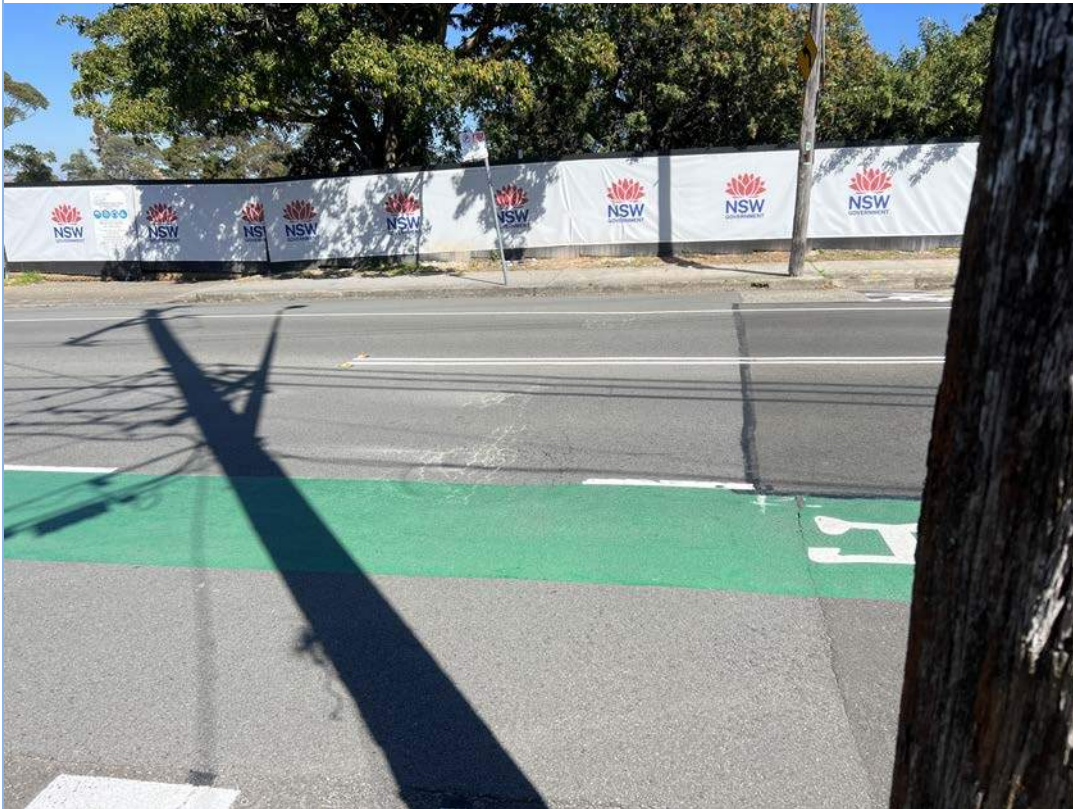




View of the inspection lid on north side of Arnhem Road, Allambie Heights.




General views of the intersection of Arnhem Road and Allambie Road, looking south.



General views of the intersection of Arnhem Road and Allambie Road, looking south.





<b>Distance</b> (from start point)	<b>Notable Items – Section 2</b> <b>Allambie Road between Arnhem Road and Sunlea Place:</b>
	

	<p>The following inspection is of the footpath to the eastern side of Allambie Road starting from Arnhem Road and finishing at Sunlea Place, Allambie Heights.</p>
0m	<p>General view of the footpath and Council strip looking south from the starting point at Arnhem Road, Allambie Heights.</p> 
3m	<p>View of the street sign.</p> 

5m	<p>View of the footpath looking south.</p> 
10m	<p>View of the footpath looking south.</p> 



15m

View of the footpath looking south showing crack damage to the layback.





20m

View of the footpath looking south.



25m

View of the telegraph pole and streetlight.



25m	<p>View of the telegraph pole and streetlight.</p> 
25m	<p>View of the footpath looking south.</p> 



28m

View of the inspection lid.



Views of the driveway crossover servicing number 234 Allambie Road showing crack damage.





Views of the driveway crossover servicing number 234 Allambie Road showing crack damage.



35m	<p>View of the footpath looking south.</p> 
40m	<p>View of the footpath looking south.</p> 

42m

Damage to the street sign.





Views of the driveway crossover, layback and gutter servicing numbers 230 and 232 Allambie Road, Allambie Heights.



Crack damage throughout the layback and gutter servicing numbers 230 and 232 Allambie Road, Allambie Heights.





Crack damage throughout the layback and gutter servicing numbers 230 and 232 Allambie Road, Allambie Heights.



50m

View of the footpath looking south.



55m

Views of the footpath looking south.



55m

Views of the footpath looking south.



60m

View of the footpath looking south.





Views of the driveway crossover and layback servicing number 228 Allambie Road, Allambie Heights.





Views of the driveway crossover and layback servicing number 228 Allambie Road, Allambie Heights.



Crack damage noted to the layback and gutter servicing number 226 Allambie Road, Allambie Heights.





70m	<p>View of the footpath looking south.</p> 
72m	<p>View of the Telstra pit.</p> 

75m

Views of the telegraph pole and streetlight.





75m	<p>Views of the telegraph pole and streetlight.</p> 
80m	<p>View of the footpath looking south.</p> 



85m

View of the footpath looking south.



88m

View of the inspection lid on the nature strip.



90m

View of the footpath looking south.





Views of the driveway crossover servicing number 224  
Allambie Road, Allambie Heights





Views of the driveway crossover servicing number 224  
Allambie Road, Allambie Heights



100m	<p>View of the footpath looking south.</p> 
105m	<p>Damage to the pole of the street sign.</p> 



105m

Views of the end point of the Council strip and footpath.



105m

Views of the end point of the Council strip and footpath.



The following inspection is of the footpath to the western side of Allambie Road starting at the bus stop at the southern end of Section 2, heading in a northerly direction and finishing at the intersection of Arnhem Road, Allambie Heights.



0m


Views of the street signs at the start point.



0m

Views of the bus stop at the start point.



0m	<p>View of the footpath looking north.</p> 
5m	<p>View of the inspection lid to the footpath.</p> 