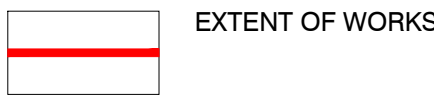
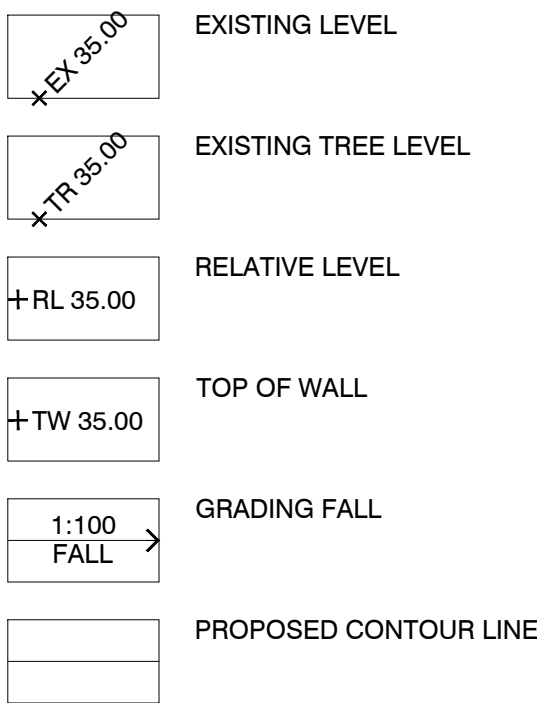


LEGEND

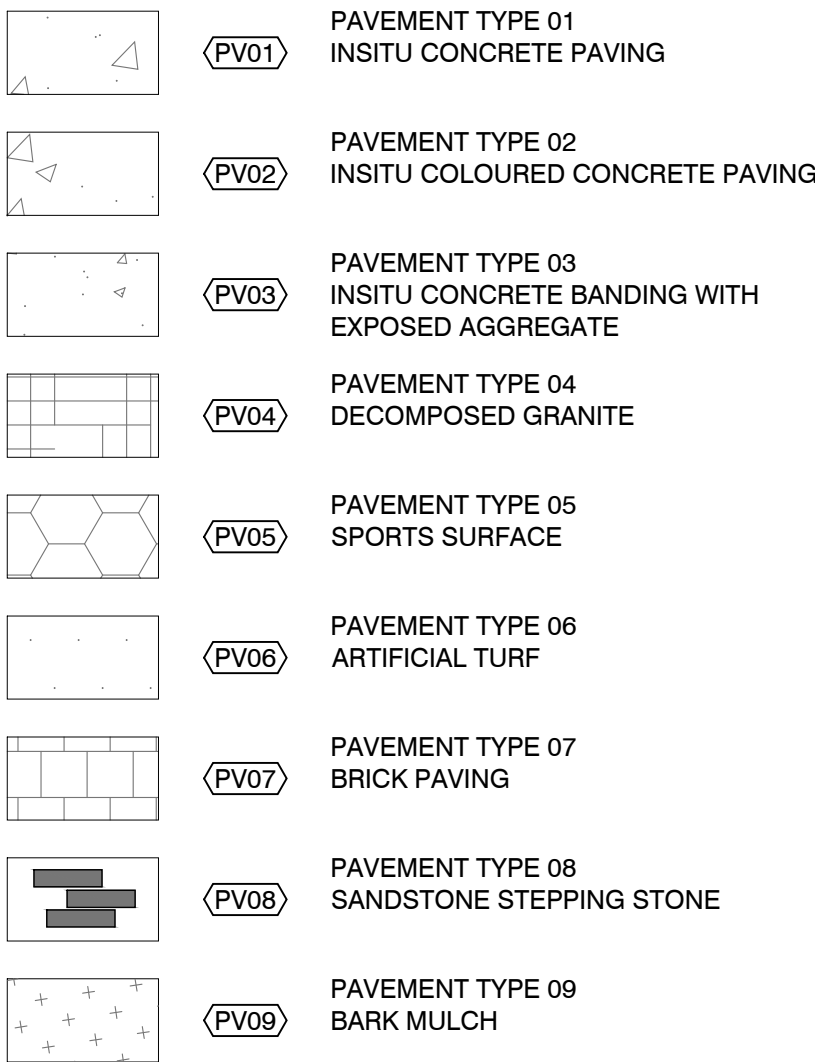
GENERAL



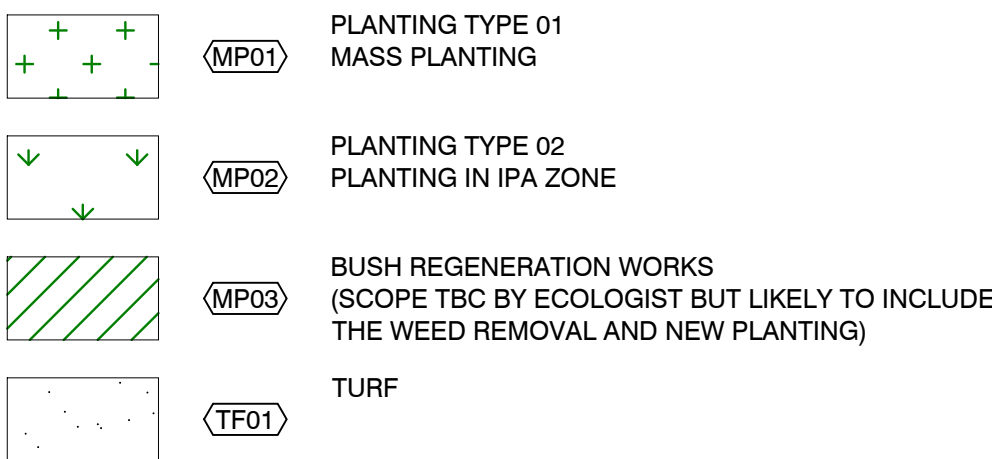
GRADING



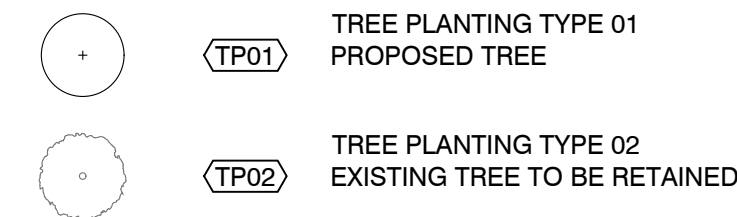
PV - PAVING



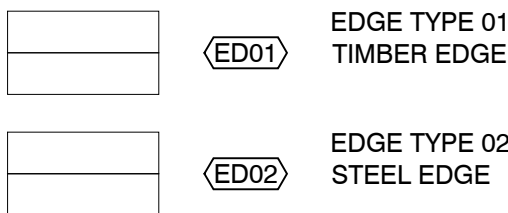
PL - PLANTING



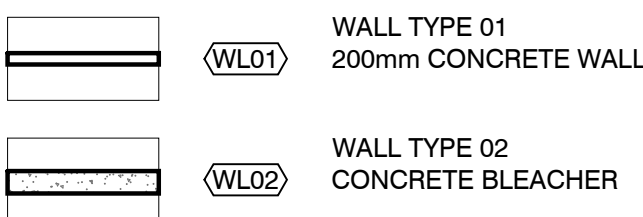
TP - TREE PLANTING



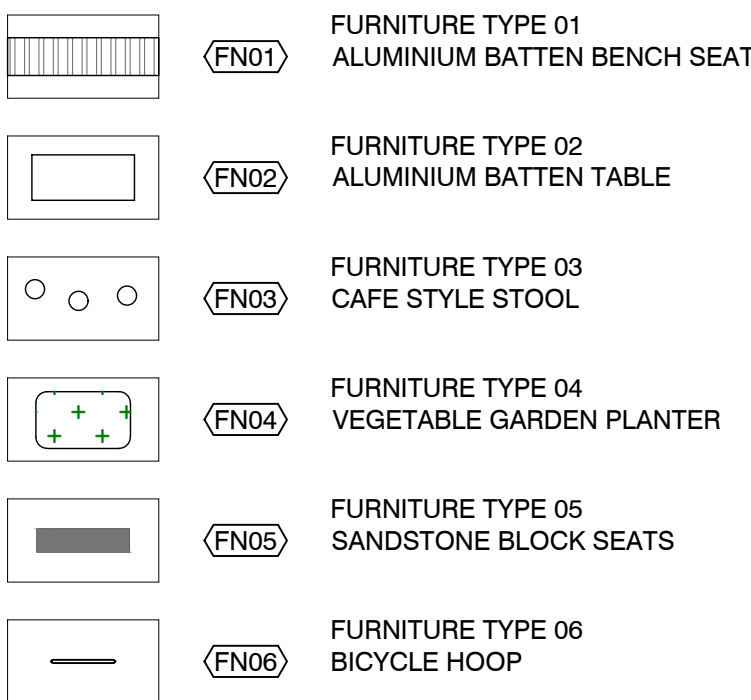
ED - EDGES



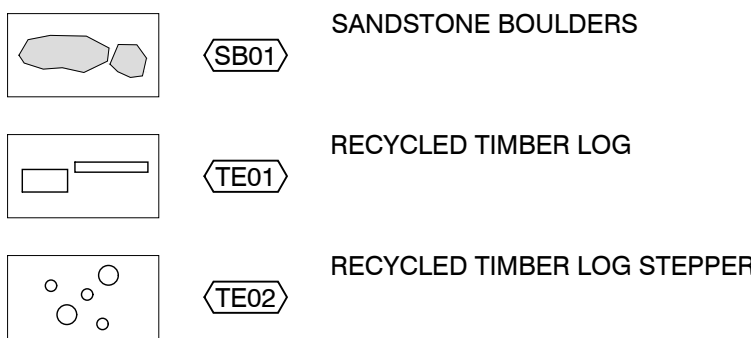
WL - WALLS



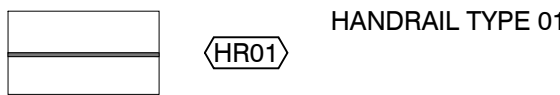
FN - FURNITURE



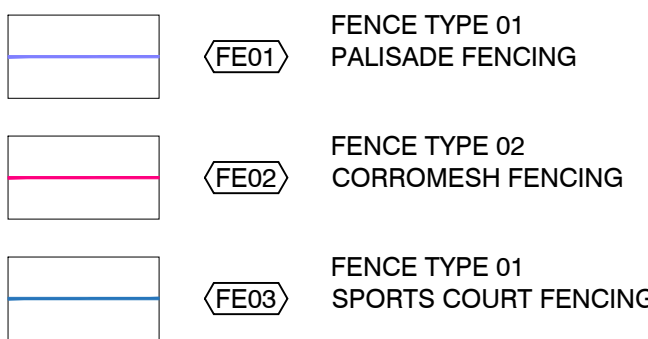
LANDSCAPE ELEMENTS



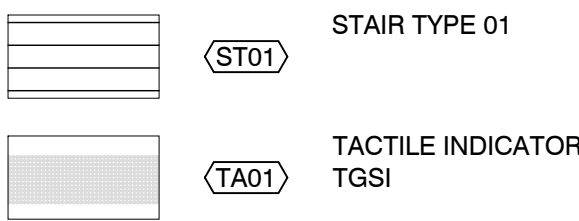
HR - HANDRAIL



FE - FENCES



ST - STAIRS



NOTES

THESE DRAWINGS ARE TO BE READ IN CONJUNCTION WITH ALL LANDSCAPE SCHEDULES AND TECHNICAL SPECIFICATION AND OTHER CONSULTANTS DRAWINGS. CHECK AND VERIFY ALL DIMENSIONS AND SITE CONDITIONS PRIOR TO THE COMMENCEMENT OF ANY WORK. DO NOT SCALE DRAWINGS - REFER TO FIGURED DIMENSIONS ONLY. INFORM OCULUS OF ANY DISCREPANCIES FOR CLARIFICATION BEFORE PROCEEDING. UNLESS NOTED OTHERWISE THIS DRAWING IS NOT FOR CONSTRUCTION.



SERVICES SHOWN ON THIS DRAWING ARE APPROXIMATELY ONLY. THE EXACT LOCATION IS TO BE CONFIRMED ON SITE BY CONTRACTOR PRIOR TO COMMENCEMENT WORK.

KEY PLAN

ISSUE	DATE	AMENDMENT	DRN	APRVD
01	11.08.22	SCHEMATIC DESIGN	SL	AK

OCULUS

level 1 / 5 wilson street, p.o. box 307, newtown, nsw 2042
p 02.9557.5533 australia@oculus.info
SYDNEY MELBOURNE WASHINGTON

PROJECT
**THE FOREST HIGH SCHOOL
ALLAMBIE HEIGHTS**
CLIENT
SINSW
259 GEORGE STREET, SYDNEY NSW 2000
ARCHITECT
ARCHITECTUS
19 MARTIN PL, SYDNEY NSW 2000

STATUS
SCHEMATIC DESIGN
FOR INFORMATION

DRAWING SCALE

NORTH POINT

DRAWING
LEGEND

PROJECT N ^o S20-032	SHEET SIZE A1
DRAWING N ^o L001	ISSUE 01



Department of Planning
and Environment

Issued under the Environmental Planning and Assessment Act 1979

Approved Application No: SSD-26876801 Signed: TVD

Granted on: 23 November 2023 Sheet no: 19 of 36

THE FOREST HIGH SCHOOL MATERIAL SCHEDULE

CODE	DESCRIPTION	Location	DETAILS
SURFACE FINISHES			
PV01	INSITU CONCRETE PAVING	Main paving, Walkways and ramps	100mm thick insitu concrete paving on compacted base. Finish: Broom finish. Colour: Portland Grey
PV02	INSITU COLOURED CONCRETE PAVING	Secondary paving, Assembly Court and Gathering Area	100mm thick reinforced insitu coloured concrete to use a spray applied polymer modified high strength cement based coloured mortar equal to Concrete Colour System (CCS) Stylepave Overlay Resurfacing in Fine Grain texture finish as supplied by Concrete Colour Systems or similar to be approved. Coloured overlay shall be applied in two coats and immediately sealed with two coats of CCS commercial grade Armourthane sealer. Finish: Broom Finish Colour: CCS Desert Buff
PV03	INSITU COLOURED CONCRETE BANDING WITH EXPOSED AGGREGATE	Banding paving, Assembly Court and Gathering Area	100mm thick reinforced insitu coloured concrete to use a spray applied polymer modified high strength cement based coloured mortar equal to Concrete Colour System (CCS) Stylepave Overlay Resurfacing in Fine Grain texture finish as supplied by Concrete Colour Systems or similar to be approved. Coloured overlay shall be applied in two coats and immediately sealed with two coats of CCS commercial grade Armourthane sealer. Finish: Exposed aggregate finish with custom aggregate and integral colour (Aggregate TBC). Colour: CCS Paperbark
PV04	DECOMPOSED GRANITE	Outdoor learning areas and near existing trees	100mm compacted depth decomposed granite gravel laid on prepared base course and subgrade.
PV05	SPORTS SURFACE	Sports court	Acrylic hard court system on concrete slab. Refer to engineers detail and specification. Painted line marking.
PV06	ARTIFICIAL TURF	Sports Field	Sports field artificial turf. Product: LigaTurf HB250 Supplier: APT Asia Pacific Colour: Field Green Refer to manufacturer for specification and fixing detail.
PV07	BRICK PAVING	Tree in paving surrounds	Brick paving Base: Bricks laid on 30mm mortar bed over concrete base. Finish: Bricks laid in stretcher bond. Colour range of recycled bricks to be approved by landscape architect.
PV08	SANDSTONE STEPPING STONES	Garden beds	Quarried sandstone logs laid into sloping garden bed as informal steps. Base: logs laid on 30mm mortar bed to concrete base. Finish: Natural split
PV09	BARK MULCH	Forest Pathway	Supplier and specification TBC.
PV10	ASPHALT PAVING	Driveway and Loading zone	Asphalt detail to civil engineer's documeatation.
WALLS, STAIRS, EDGES & FENCES			
WL01	CONCRETE RETAINING WALL	Terracing and planting	Insitu Concrete Retaining Wall. Finish: 32MPa reinforced white cement insitu concrete walls with class 2 finish. Tie holes to be plugged to finish 5mm below surface. 10mm chamfer to top edges. Waterproof membrane to internal face with planting medium. Notes: All landscape retaining walls to be less than 1m high.
WL02	INSITU CONCRETE BLEACHER	Bleacher seating	Cast insitu concrete bleacher with reinforcing to structural engineers detail. Each tread to have contrasting nose strip recessed into stairs only as per detail. Ensure luminance contrast is achieved. Tactiles installed to top and bottom of stair to AS 1428. Colour: Portland Grey
ST01	INSITU CONCRETE STAIR	Refer drawings for locations	Cast insitu concrete stairs with reinforcing to structural engineers detail. Concrete to be broom finish to tread to ensure AS slip resistance compliance and class 2 finish to riser. Each tread to have contrasting nose strip as per detail. Tactiles installed to top and bottom of stair to AS1428. Refer detail for riser and tread dimensions Colour: Portland Grey
HR01	STEEL HANDRAILS	To all stairs and ramps exceeding 1:20 grade	40mm Dia rolled Galvanised Steel double handrail looped at end, with 40mm Dia stainless steel uprights as per details. Handrail to comply with AS1428. Detail to EFSG requirements.
TGSI01	TACTILE SURFACE INDICATORS	To all stairs and ramps exceeding 1:20 grade	Safespot 'Luna' ribbed stainless steel tactiles with ribbed polymer black centre infill to meet AS1428.4:2002 Tactile Indicators. Slip resistant.
ED01	TIMBER EDGE	Between planting and turf	100 x 38mm timber edging, fixed to 50 x 50 x 600mm long pegs on garden sides of edge. Timber to be termite resistant.
ED02	RAISED EDGE	To planter beds between terracing	300-450mm height x 150mm thick concrete edging. Compacted sub base to engineers specification
FE01	SECURITY FENCE	School Boundary	2.4m high Steel Palisade Security Fence. 2400mm high hot dipped galvanised and powdercoated perimeter fence. Concrete footings. Supplier TBC.
FE02	SECURITY FENCE	Secondary Secure Line	2.1m high 'Corromesh' Security Fence. 2100mm galvanised and high-quality polyseter powder coated mesh fence Concrete footings. Supplier TBC.
FE03	SPORTS COURT & FIELD FENCING	Around sports courts and field	2.4m high galvanised steel chainwire multi-purpose sports fence. Concrete footings. Supplier TBC.
GA01	SWING GATE	School Boundary & Internal	Refer to Architect's documentation for detail and specification.
GA02	SLIDING GATE	School Boundary & Internal	Refer to Architect's documentation for detail and specification.

STRUCTURES & FURNITURE			
FN01	BENCH SEAT	Gathering and Outdoor Learning areas	Linea Seat on insitu concrete base. Supplier: Street Furniture Australia Legs and Mounting: Plinth fixed to concrete slab base Frame: TBC Batten: Aluminium 'Spotted Gum', end cap to match frame colour.
FN02	TABLE	Outdoor Learning areas	Linea Table on insitu concrete base. Supplier: Street Furniture Australia Legs and Mounting: Pedestal surface fixed to concrete slab base Frame: TBC Batten: Aluminium Spotted Gum, end cap to match frame colour.
FN03	STOOLS	Outdoor Learning areas	Cafe Stool on insitu concrete base. Supplier: Street Furniture Australia Legs and Mounting: Baseplate surface fixed to concrete slab base Colour: TBC
FN04	VEGETABLE GARDEN PLANTER	Outdoor Learning Area	Steel raised planter bed Finish: Powdercoated colour TBC
FN05	SANDSTONE BLOCK SEATS	Passive Areas	Quarried sandstone log Grade B in random sizes. Laid on compacted subgrade. Any exposed sharp edges to be smoothed and rounded off. Allow for minimum 25% coverage. Finish: Sawn to Top, Split to sides
FN06	BICYCLE RACK	Bicycle Parking	Semi Hoop on insitu concrete base Supplier: Street Furniture Australia Finish: Brushed 304 Stainless Steel Mounting: Subsurface Fixed

LANDSCAPE ELEMENTS			
SB01	SANDSTONE BOULDERS	Passive Landscape and garden beds	Large to medium sizes, natural manhandables. Laid in garden beds as informal seating elements and stepping stones.
TE01	RECYCLED TIMBER LOG SEATING	Passive Areas	Recycled timber logs from existing site trees to be removed. TBC
TE02	RECYCLED TIMBER LOG STEPPERS	Passive Areas	Recycled timber steppers from existing site trees to be removed. TBC

SOFT LANDSCAPING			
MP01	MASS PLANTING	As shown	Planting as scheduled in prepared garden beds. Includes subsoil drainage, imported organic topsoil, 75mm deep gravel mulch and other planting requirements. Provide details of mulch for approval. Topsoil depth as detailed and specified.
MP02	MASS PLANTING WITHIN IPA	As shown	Planting as scheduled in prepared garden beds. Includes subsoil drainage, imported organic topsoil, 75mm deep gravel mulch and other planting requirements. Provide details of mulch for approval. Topsoil depth as detailed and specified. Managed understorey planting with 10% shrub cover and 90% groundcover to align with bushfire prevention guidelines.
MP03	FOREST REGENERATION PLANTING	As shown	Bush regeneration works - scope TBC by ecologist but likely to include weed removal and new planting.
MU01	GRAVEL MULCH	To all garden beds	75mm non-organic mulch layer.
TF01	TURF	Passive areas	Turfing to rolled out on prepared ground, includes subsoil drainage, imported turf underlay mix and ameliorated site topsoil, soil depth as detailed and specified.
TP01	TREE PLANTING	As shown	Existing ground excavated to detailed depth. Planting as scheduled in prepared treepit. Includes subsoil drainage, imported A horizon organic topsoil, imported B horizon soil, 75mm deep organic mulch and other planting requirements. Provide details of mulch for approval. Topsoil depth as detailed and specified.
TP02	EXISTING TREE TO BE RETAINED	As shown. Refer to Tree Retention and Removal Plan.	Existing tree to be retained and protected. Refer to Arborist report for protection specifications.



Department of Planning and Environment

Issued under the Environmental Planning and Assessment Act 1979

Approved Application No: SSD-26876801 Signed: TVD

Granted on: 23 November 2023 Sheet no: 20 of 36

NOTES

THESE DRAWINGS ARE TO BE READ IN CONJUNCTION WITH ALL LANDSCAPE SCHEDULES AND TECHNICAL SPECIFICATION AND OTHER CONSULTANTS DRAWINGS. CHECK AND VERIFY ALL DIMENSIONS AND SITE CONDITIONS PRIOR TO THE COMMENCEMENT OF ANY WORK. DO NOT SCALE DRAWINGS - REFER TO FIGURED DIMENSIONS ONLY. INFORM OCULUS OF ANY DISCREPANCIES FOR CLARIFICATION BEFORE PROCEEDING. UNLESS NOTED OTHERWISE THIS DRAWING IS NOT FOR CONSTRUCTION.



SERVICES SHOWN ON THIS DRAWING ARE APPROXIMATELY ONLY. THE EXACT LOCATION IS TO BE CONFIRMED ON SITE BY CONTRACTOR PRIOR TO COMMENCEMENT WORK.

KEY PLAN

ISSUE	DATE	AMENDMENT	DRN	APRVD
A	16.09.22	SSDA	SL	AK

OCULUS

level 1 / 5 wilson street, p.o. box 307, newtown, nsw 2042
p 02.9557.5533 australia@oculus.info
SYDNEY MELBOURNE WASHINGTON

PROJECT
**THE FOREST HIGH SCHOOL
ALLAMBIE HEIGHTS**

CLIENT
SINSW
259 GEORGE STREET, SYDNEY NSW 2000

ARCHITECT
ARCHITECTUS
19 MARTIN PL, SYDNEY NSW 2000

STATUS
SSDA
DEVELOPMENT APPLICATION

DRAWING SCALE

NORTH POINT

DRAWING
**MATERIALS AND
FINISHES SCHEDULE**

PROJECT №

S20-032

DRAWING №

L002

SHEET SIZE

A1

ISSUE

A

Code	Botanic Name	Common Name	Mature Height (metres)	Mature Spread (metres)	Spacing / m2	Pot Size
TREES						
AC	Angophora costata**	Sydney Red Gum	25m	15m	As shown	400L
AP	Acer palmatum 'Sango Kaku'	Coral Bark Maple	8m	4m	As shown	100L
BS	Banksia serrata**	Old Man Banksia	15m	4m	As shown	100L
CG	Corymbia gummifera**	Red Bloodwood	30m	10m	As shown	100L
EH	Eucalyptus haemastoma**	Scribbly Gum	15m	15m	As shown	100L
SS	Stenocarpus sinuatus*	Fire Wheel Tree	20m	8m	As shown	200L
TL	Tristaniopsis laurina 'Laurina'*	Water Gum	15m	6m	As shown	100L

FEATURE PLANTING						
AnGV	Anigozanthos 'Gold Velvet'*	Kangaroo Paw	1m	1m	500mm	300mm
Doex	Doryanthes excelsa*	Gymea Lily	2m	1.2m	As shown	300mm
Grca	Grevillea caleyi**	Caley's grevillea	2m	2m	As shown	300mm
Tesp	Telopea speciosissima**	Waratah	3m	2m	500mm	200mm
Xame	Xanthorrhoea media**	Grass Tree	1m	1m	As shown	300mm
Zafu	Zamia furfuracea	Cardboard Palm	1m	2m	500mm	200mm

SHRUBS						
Aclo	Acacia longifolia**	Sydney Golden Wattle	6m	4m	As shown	200mm
Acul	Acacia ulicifolia**	Prickly Moses	2m	2m	500mm	200mm
Basp	Banksia spinulosa**	Hairpin Banksia	0.5m	1.5m	500mm	200mm
CgAR	Ceratopetalum gummiferum 'Alberys Red'**	NSW Christmas Bush	5m	3m	600mm	300mm
Dotr	Dodonaea triquetra*	Common Hop-Bush	3m	2m	500mm	140mm
GrSe	Grevillea speciosa	Red Spider Flower	3m	2m	400mm	300mm
Pepu	Petrophile pulchella**	Conesticks	2m	1m	500mm	200mm
LePC	Leptospermum 'Pink Cascade'*	Pink Cascade	0.8m	1.5m	600mm	300mm
Letr	Leptospermum trinervium**	Flaky-Barked Tea-Tree	2m	2m	600mm	300mm
WfGB	Westringia fruticosa 'Grey Box'*	Compact Coastal Rosemary	0.45m	0.45m	500mm	200mm

GROUNDCOVERS, HERBS, CLIMBERS						
Ache	Actinotus helianthi*	Flannel Flower	1.2m	0.5m		140mm
Adae	Adiantum aethiopicum*	Common Maidenhair	0.5m	0.5m		140mm
Blec	Blechnum sp.*	Dwarf Tree Fern	1m	2m		140mm
Bisc	Billardiera scandens**	Apple Berry Dumplings	1.5m	3m		140mm
Cagl	Carpobrotus glaucescens*	Native Pigface	0.2m	1m		140mm
Cian	Cissus antarctica*	Kangaroo Grape	4m	6m		140mm
Clgl	Clematis glycinoides*	Native Clematis	2.5m			140mm
Dica	Dianella caerulea**	Blue Flax Lily	1m	2m		140mm
Doas	Doodia aspera*	Rasp Fern	0.4m	0.6m		140mm
Fino	Ficinia nodosa*	Knobby Club Rush	1.5m	2m		140mm
Glcl	Glycine clandestina*	Love Creeper	0.2	2m		140mm
Goov	Goodenia ovata*	Hop Goodenia	0.3m	2m		140mm
Hisc	Hibbertia scandens*	Golden Guinea Flower	3m	5m		140mm
Inau	Indigofera australis*	Australian Indigo	2m	2m		140mm
PaSe	Patersonia sericea**	Native Iris	0.6m	0.3m		140mm
Pili	Pimelea linifolia**	Slender Rice Flower	0.4m	0.8m		140mm
Keru	Kennedia rubicunda*	Dusky Coral Pea	3m	3m		140mm
Vihe	Viola hederacea*	Native Violet	0.2m	1m		140mm

GRASSES						
Caap	Carex appressa*	Sedge	1m	1m		140mm
CgCl	Casuarina glauca 'Cousin It'*	Sheoak 'Cousin It'	0.3m	1m		140mm
Cyre	Cymbopogon refractus*	Barbed Wire Grass	1m			140mm
Digr	Dietes grandiflora	Fairy Iris	0.8m	0.8m		140mm
Dich	Dichelachne sp.*	Plume Grass	0.2m	1.2m		140mm
LoLo	Lomandra longifolia	Common Mat-rush	1m	1m		140mm
LoBR	Lomandra glauca 'Blue Ridge'**	Lomandra Blue Ridge	0.6m	0.6m		140mm
Lomu	Lomandra multiflora**	Mat-rush	0.3m	1.5m		140mm
Thau	Themeda australis	Kangaroo Grass	0.6m	0.6m		140mm

EDIBLE NATIVE GARDEN -TBC						
AcAc	Acacia acuminata*	Raspberry jam Wattle	5m	3m		100L
AcRa	Acronychia acidula	Lemon Aspen	12m	4m		100L
CiAu	Citrus australasica	Finger Lime	3m	3m		300mm
Cyam	Cymbogopon ambigu	Native Lemon Grass	1-2m	1-2m		140mm
PoEl	Podocarpus elatus	Illawarra Plum	15m	5m		100L

NOTES

THESE DRAWINGS ARE TO BE READ IN CONJUNCTION WITH ALL LANDSCAPE SCHEDULES AND TECHNICAL SPECIFICATION AND OTHER CONSULTANTS DRAWINGS. CHECK AND VERIFY ALL DIMENSIONS AND SITE CONDITIONS PRIOR TO THE COMMENCEMENT OF ANY WORK. DO NOT SCALE DRAWINGS - REFER TO FIGURED DIMENSIONS ONLY. INFORM OCULUS OF ANY DISCREPANCIES FOR CLARIFICATION BEFORE PROCEEDING. UNLESS NOTED OTHERWISE THIS DRAWING IS NOT FOR CONSTRUCTION.



SERVICES SHOWN ON THIS DRAWING ARE APPROXIMATELY ONLY. THE EXACT LOCATION IS TO BE CONFIRMED ON SITE BY CONTRACTOR PRIOR TO COMMENCEMENT WORK.

KEY PLAN

ISSUE	DATE	AMENDMENT	DRN	APRVD
A	16.09.22	SSDA	SL	AK

OCULUS

level 1 / 5 wilson street, p.o. box 307, newtown, nsw 2042
p 02.9557.5533 australia@oculus.info
SYDNEY MELBOURNE WASHINGTON

PROJECT
**THE FOREST HIGH SCHOOL
ALLAMBIE HEIGHTS**
CLIENT
SINSW
259 GEORGE STREET, SYDNEY NSW 2000
ARCHITECT
ARCHITECTUS
19 MARTIN PL, SYDNEY NSW 2000

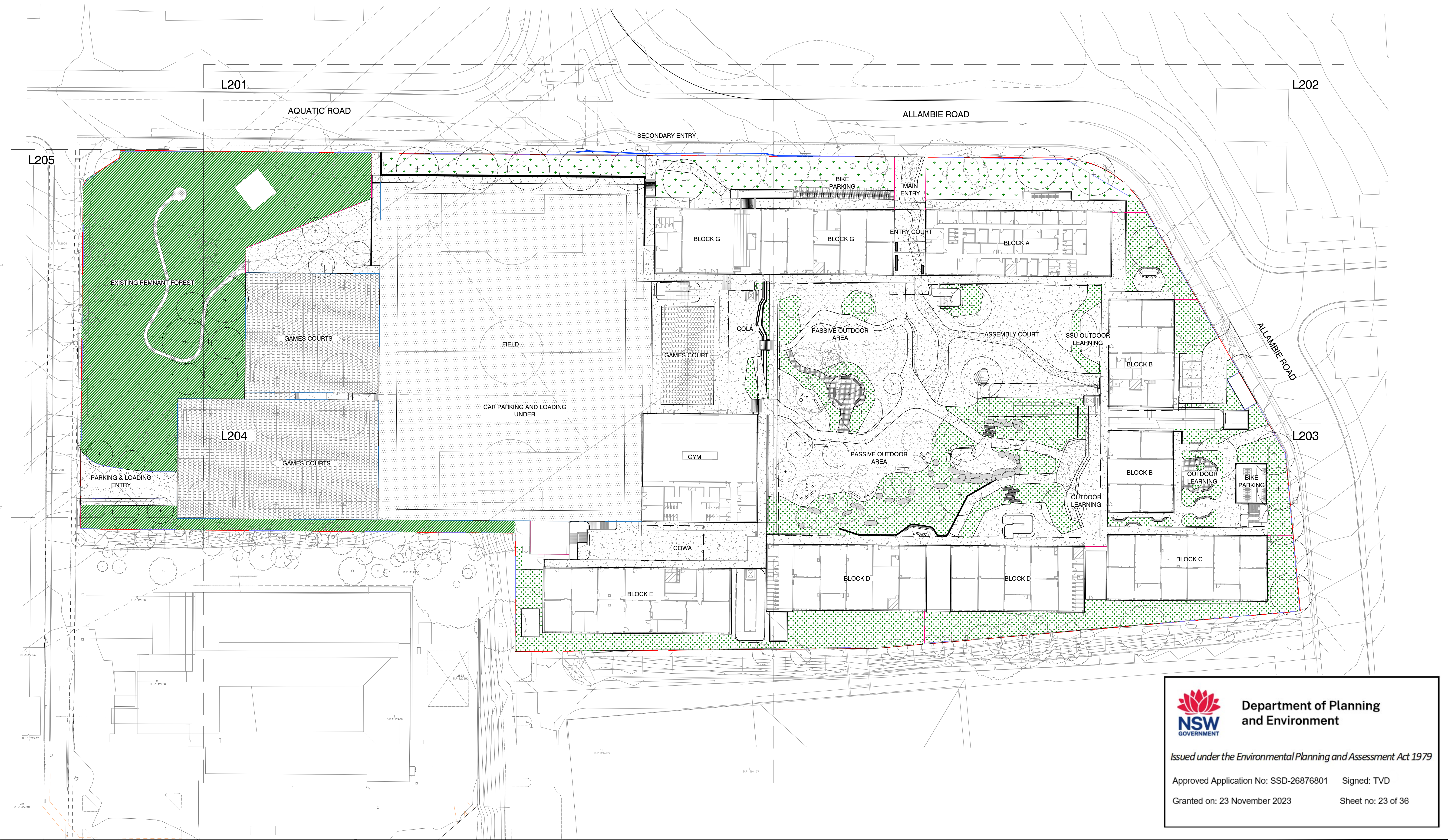
STATUS
SSDA
DEVELOPMENT APPLICATION

DRAWING SCALE

NORTH POINT

DRAWING
**MASTER PLANT
SCHEDULE**

PROJECT № S20-032	SHEET SIZE A1
DRAWING № L003	ISSUE A





**Department of Planning
and Environment**

Issued under the Environmental Planning and Assessment Act 1979

Approved Application No: SSD-26876801

Signed: TVD


Granted on: 23 November 2023

Sheet no: 23 of 36

NOTES

THESE DRAWINGS ARE TO BE READ IN CONJUNCTION WITH ALL LANDSCAPE SCHEDULES AND TECHNICAL SPECIFICATION AND OTHER CONSULTANTS DRAWINGS. CHECK AND VERIFY ALL DIMENSIONS AND SITE CONDITIONS PRIOR TO THE COMMENCEMENT OF ANY WORK. DO NOT SCALE DRAWINGS - REFER TO FIGURED DIMENSIONS ONLY. INFORM OCULUS OF ANY DISCREPANCIES FOR CLARIFICATION BEFORE PROCEEDING. UNLESS NOTED OTHERWISE THIS DRAWING IS NOT FOR CONSTRUCTION.

© OCULUS 2017 All rights reserved



SERVICES SHOWN ON THIS DRAWING ARE APPROXIMATELY ONLY. THE EXACT LOCATION IS TO BE CONFIRMED ON SITE BY CONTRACTOR PRIOR TO COMMENCEMENT WORK.

KEY PLAN

ISSUE	DATE	AMENDMENT	DRN	APRVD
01	11.08.22	SCHEMATIC DESIGN	SL	AK

OCULUS

level 1 / 5 wilson street, p.o. box 307, newtown, nsw 2042
p 02.9557.5533 australia@oculus.info
SYDNEY MELBOURNE WASHINGTON

PROJECT
**THE FOREST HIGH SCHOOL
ALLAMBIE HEIGHTS**

CLIENT
SINSW
259 GEORGE STREET, SYDNEY NSW 2000

ARCHITECT
ARCHITECTUS
19 MARTIN PL, SYDNEY NSW 2000


STATUS
SCHEMATIC DESIGN
FOR INFORMATION

DRAWING SCALE

SCALE 1:500 @ A1

15 0 5 10 25m

NORTH POINT



DRAWING
**GENERAL ARRANGEMENT PLAN
OVERALL SITE**

PROJECT No
S20-032

DRAWING No
L200

SHEET SIZE
A1

ISSUE
01

FILE PATH: P:\SYDNEY\S20-032 THE FOREST HIGH SCHOOL\06 DOCUMENTATION\01 CAD DRAWINGS\02 SHEET SETS\ES\OC_S20-032_200_SURFACES FINISHES.DWG; DATE PLOTTED: 10/08/2022; PLOTTED BY: ALIA KHAN

Sheet no: 24 of 36



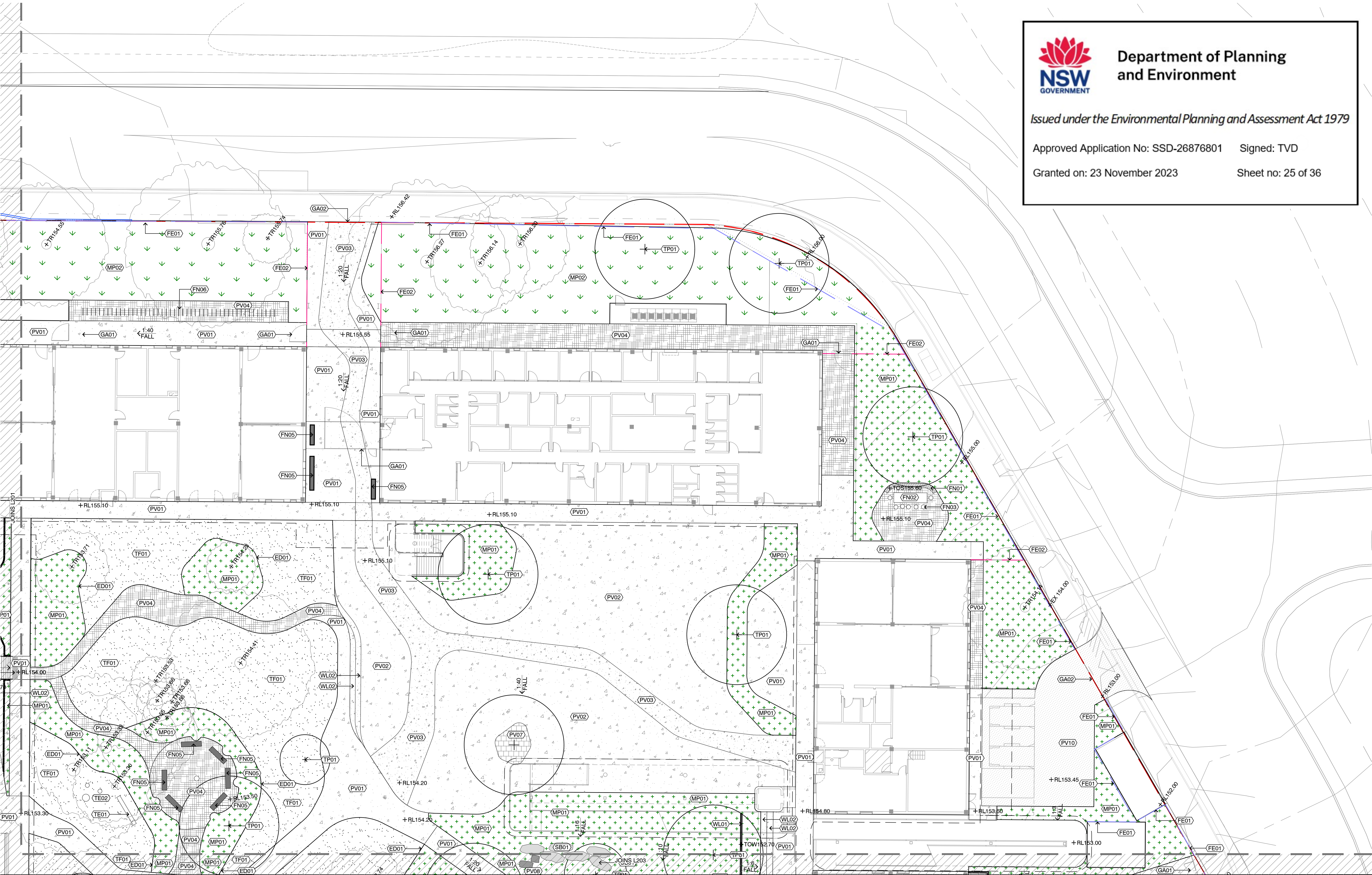


Department of Planning
and Environment

Issued under the Environmental Planning and Assessment Act 1979

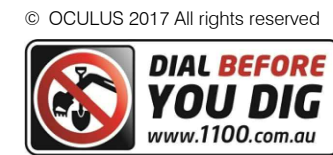
Approved Application No: SSD-26876801 Signed: TVD

Granted on: 23 November 2023 Sheet no: 25 of 36



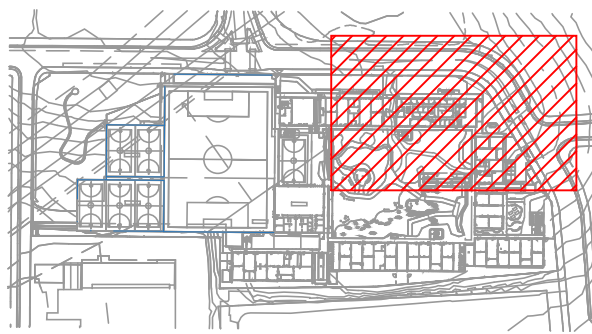
NOTES

THESE DRAWINGS ARE TO BE READ IN CONJUNCTION WITH ALL LANDSCAPE SCHEDULES AND TECHNICAL SPECIFICATION AND OTHER CONSULTANTS DRAWINGS. CHECK AND VERIFY ALL DIMENSIONS AND SITE CONDITIONS PRIOR TO THE COMMENCEMENT OF ANY WORK. DO NOT SCALE DRAWINGS - REFER TO FIGURED DIMENSIONS ONLY. INFORM OCULUS OF ANY DISCREPANCIES FOR CLARIFICATION BEFORE PROCEEDING. UNLESS NOTED OTHERWISE THIS DRAWING IS NOT FOR CONSTRUCTION.



SERVICES SHOWN ON THIS DRAWING ARE APPROXIMATELY ONLY. THE EXACT LOCATION IS TO BE CONFIRMED ON SITE BY CONTRACTOR PRIOR TO COMMENCEMENT WORK.

KEY PLAN



ISSUE	DATE	AMENDMENT	DRN	APRVD
A	16.09.22	SSDA	SL	AK

OCULUS

level 1 / 5 wilson street, p.o. box 307, newtown, nsw 2042
p 02.9557.5533 australia@oculus.info
SYDNEY MELBOURNE WASHINGTON

PROJECT
**THE FOREST HIGH SCHOOL
ALLAMBIE HEIGHTS**

CLIENT
SINSW
259 GEORGE STREET, SYDNEY NSW 2000

ARCHITECT
ARCHITECTUS
19 MARTIN PL, SYDNEY NSW 2000

STATUS
SSDA
DEVELOPMENT APPLICATION



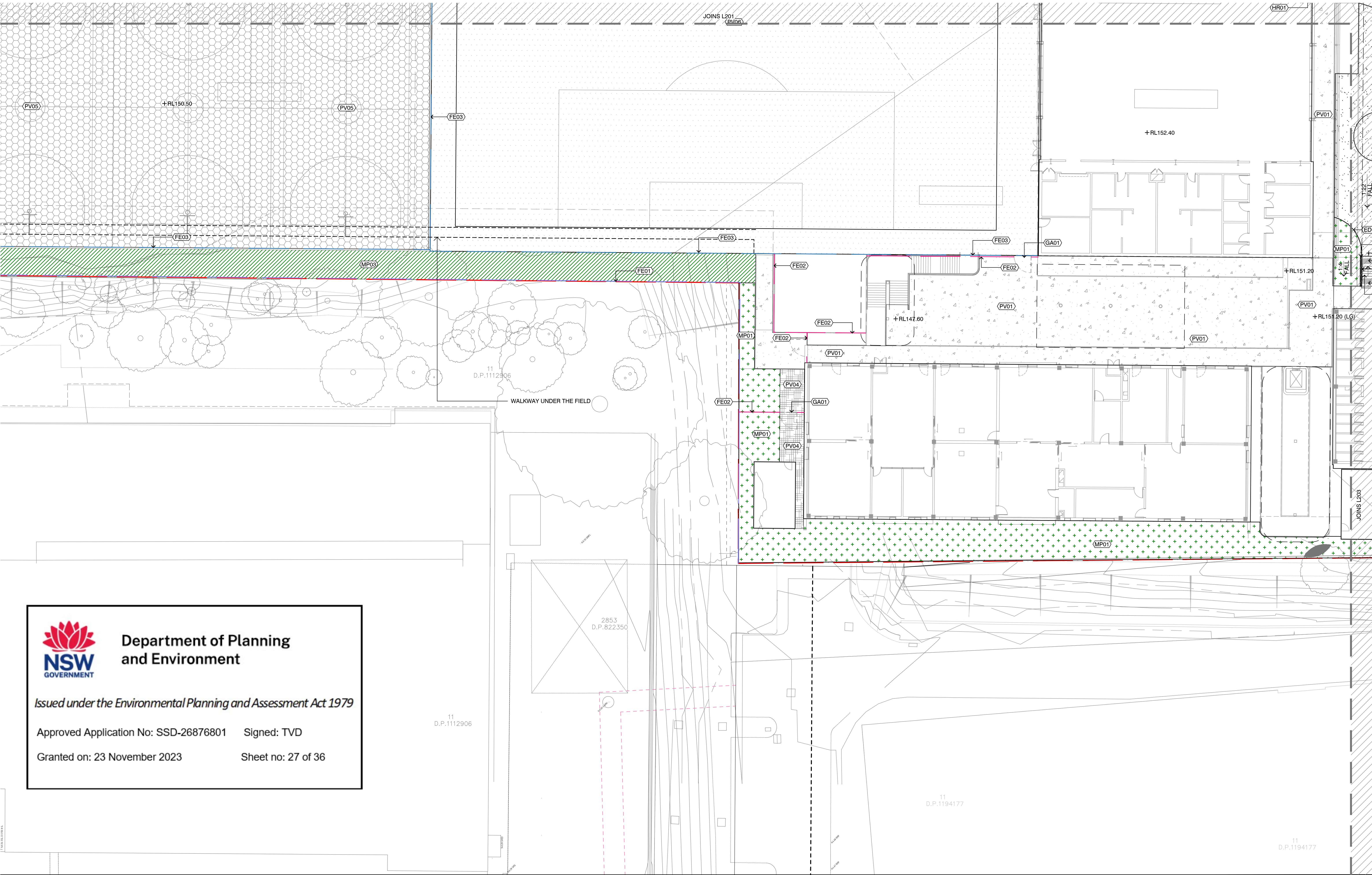
DRAWING
**GENERAL ARRANGEMENT PLAN
SHEET 2 OF 5**

PROJECT No
S20-032

DRAWING No
L202

SHEET SIZE
A1

ISSUE
A



Department of Planning
and Environment

Issued under the Environmental Planning and Assessment Act 1979

Approved Application No: SSD-26876801 Signed: TVD

Granted on: 23 November 2023 Sheet no: 27 of 36

NOTES

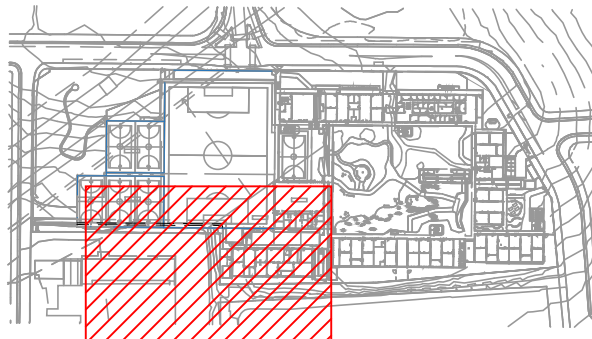
THESE DRAWINGS ARE TO BE READ IN CONJUNCTION WITH ALL LANDSCAPE SCHEDULES AND TECHNICAL SPECIFICATION AND OTHER CONSULTANTS DRAWINGS. CHECK AND VERIFY ALL DIMENSIONS AND SITE CONDITIONS PRIOR TO THE COMMENCEMENT OF ANY WORK. DO NOT SCALE DRAWINGS - REFER TO FIGURED DIMENSIONS ONLY. INFORM OCULUS OF ANY DISCREPANCIES FOR CLARIFICATION BEFORE PROCEEDING. UNLESS NOTED OTHERWISE THIS DRAWING IS NOT FOR CONSTRUCTION.

© OCULUS 2017 All rights reserved



SERVICES SHOWN ON THIS DRAWING ARE APPROXIMATELY ONLY. THE EXACT LOCATION IS TO BE CONFIRMED ON SITE BY CONTRACTOR PRIOR TO COMMENCEMENT WORK.

KEY PLAN



ISSUE	DATE	AMENDMENT	DRN	APRVD
A	16.09.22	SSDA	SL	AK

OCULUS

level 1 / 5 wilson street, p.o. box 307, newtown, nsw 2042
p 02.9557.5533 australia@oculus.info
SYDNEY MELBOURNE WASHINGTON

PROJECT
**THE FOREST HIGH SCHOOL
ALLAMBIE HEIGHTS**
CLIENT
SINSW
259 GEORGE STREET, SYDNEY NSW 2000
ARCHITECT
ARCHITECTUS
19 MARTIN PL, SYDNEY NSW 2000

STATUS
SSDA
DEVELOPMENT APPLICATION

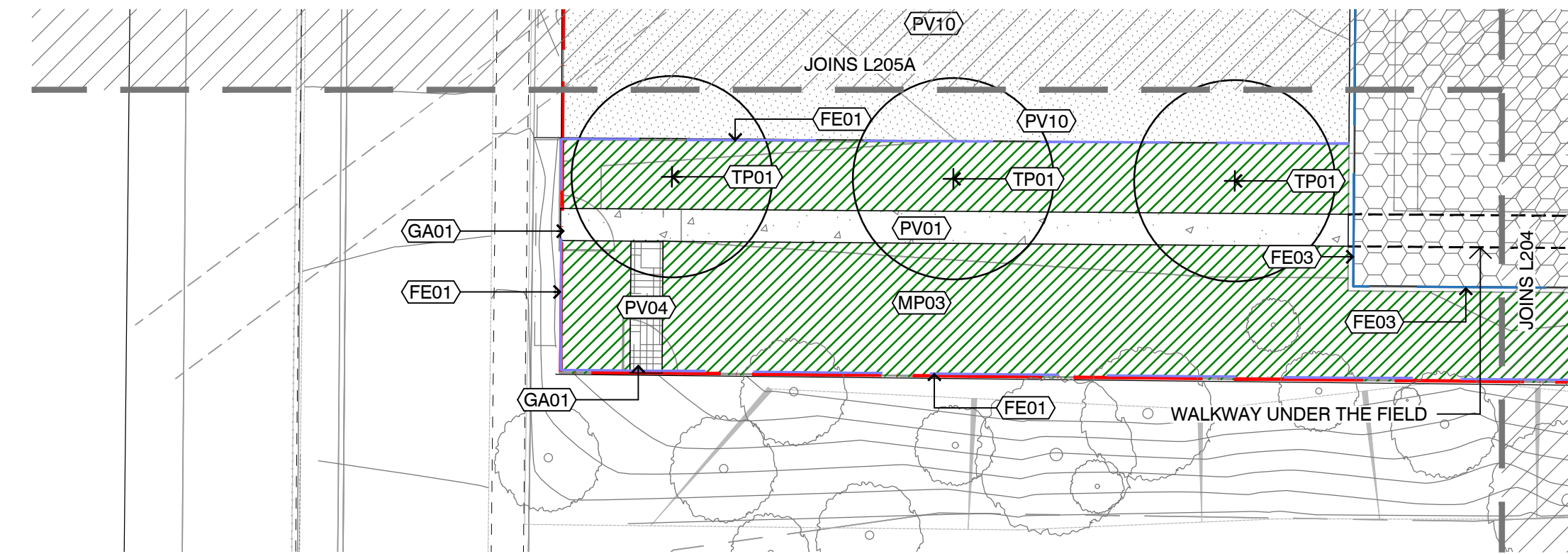
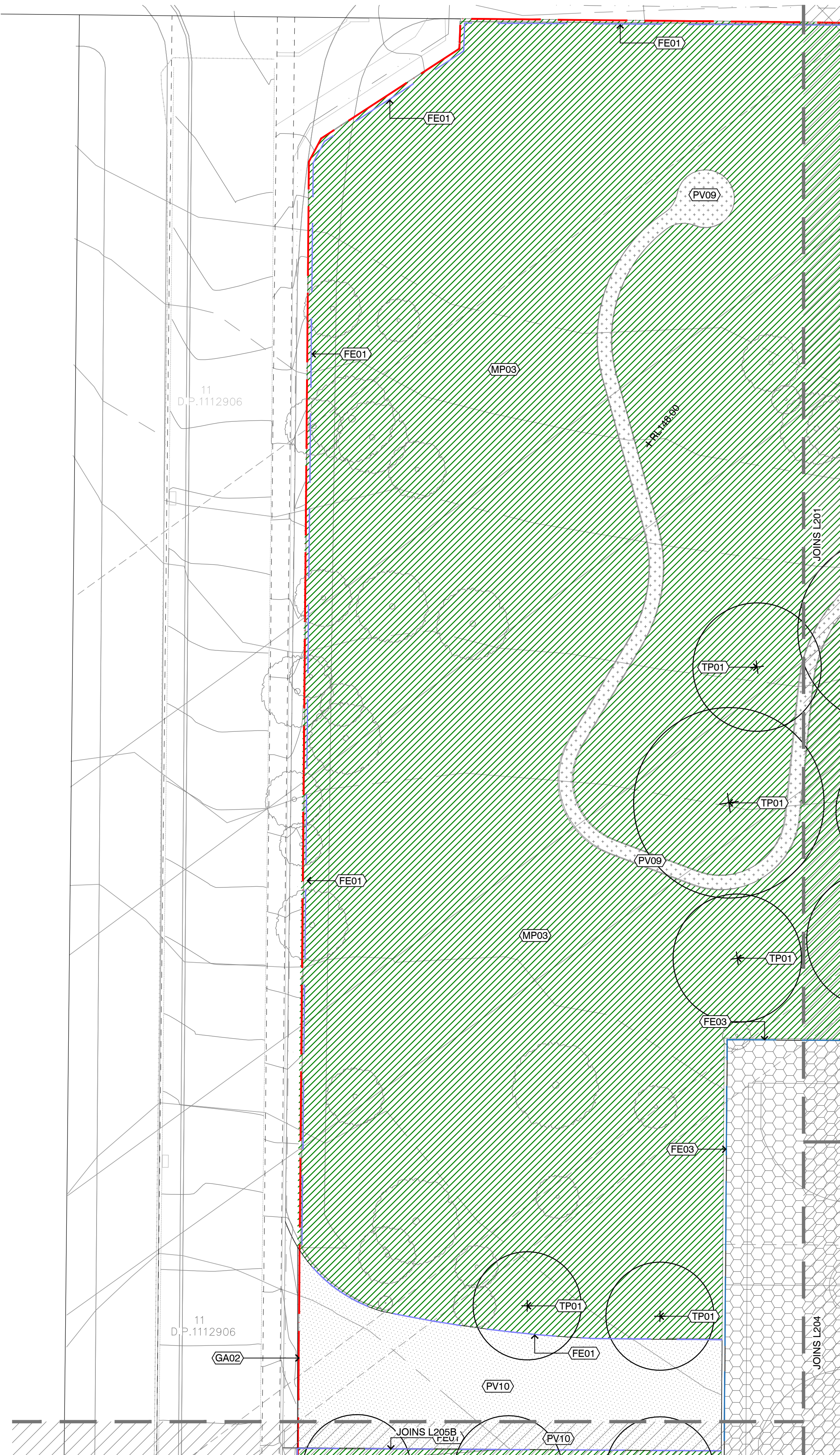
DRAWING SCALE
SCALE 1:200 @ A1
2 0 2 4 10m



DRAWING
**GENERAL ARRANGEMENT PLAN
SHEET 4 OF 5**

PROJECT No
S20-032
DRAWING No
L204

SHEET SIZE
A1
ISSUE
A



Department of Planning
and Environment

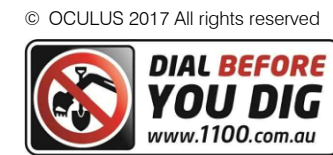
Issued under the Environmental Planning and Assessment Act 1979

Approved Application No: SSD-26876801 Signed: TVD

Granted on: 23 November 2023 Sheet no: 28 of 36

NOTES

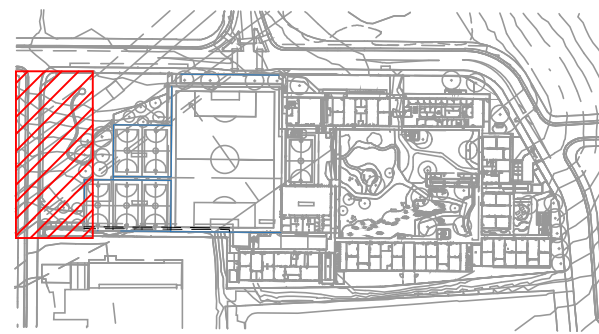
THESE DRAWINGS ARE TO BE READ IN CONJUNCTION WITH ALL LANDSCAPE SCHEDULES AND TECHNICAL SPECIFICATION AND OTHER CONSULTANTS DRAWINGS. CHECK AND VERIFY ALL DIMENSIONS AND SITE CONDITIONS PRIOR TO THE COMMENCEMENT OF ANY WORK. DO NOT SCALE DRAWINGS - REFER TO FIGURED DIMENSIONS ONLY. INFORM OCULUS OF ANY DISCREPANCIES FOR CLARIFICATION BEFORE PROCEEDING. UNLESS NOTED OTHERWISE THIS DRAWING IS NOT FOR CONSTRUCTION.



SERVICES SHOWN ON THIS DRAWING ARE APPROXIMATELY ONLY. THE EXACT LOCATION IS TO BE CONFIRMED ON SITE BY CONTRACTOR PRIOR TO COMMENCEMENT WORK.

FILE PATH: P:\SYDNEY\S20-032 THE FOREST HIGH SCHOOL\08 DOCUMENTATION\01 CAD DRAWINGS\02 SHEET SETS\IES\OC_S20-032_200_SURFACES FINISHES.DWG; DATE PLOTTED: 15/09/2022; PLOTTED BY: SCARLETT LEUNG

KEY PLAN



ISSUE	DATE	AMENDMENT	DRN	APRVD
A	16.09.22	SSDA	SL	AK

OCULUS

level 1 / 5 wilson street, p.o. box 307, newtown, nsw 2042
p 02.9557.5533 australia@oculus.info
SYDNEY MELBOURNE WASHINGTON

PROJECT
**THE FOREST HIGH SCHOOL
ALLAMBIE HEIGHTS**
CLIENT
**SINSW
259 GEORGE STREET, SYDNEY NSW 2000**
ARCHITECT
**ARCHITECTUS
19 MARTIN PL, SYDNEY NSW 2000**

STATUS
SSDA
DEVELOPMENT APPLICATION

DRAWING SCALE
SCALE 1:200 @ A1
2 0 2 4 10m



DRAWING
**GENERAL ARRANGEMENT PLAN
SHEET 5 OF 5**

PROJECT N° S20-032	SHEET SIZE A1
DRAWING N° L205	ISSUE A