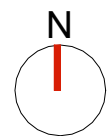
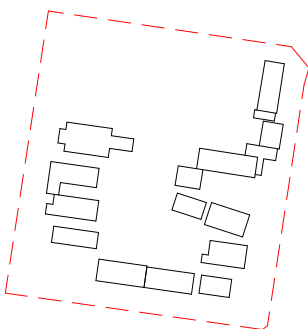




1 SITE PLAN - RL 69.875  
1 : 600 @A1

Key Plan:



**Drawing Disclaimer:**  
Do not scale from drawings.  
Verify all dimensions on site before commencing work.  
Copying or reproduction of this drawing is strictly prohibited without the consent of PTW Architects

**Note**  
PTW takes no responsibility for external building elements. Anything connected with any design, materials selection, construction or installation of any cladding, facade or external building element must be checked by and remains the responsibility of others, including suitably qualified experts as may be required.

Rev	Amendment	By	Chk*	Date
E	SSDA SUBMISSION	FJ	DJ	22/09/12
D	SSDA SUBMISSION	FJ	DJ	21/11/10
C	DRAFT SSDA SUBMISSION	MB	DJ	21/11/01
B	DRAFT SSDA SUBMISSION	MB	DJ	21/10/25
A	DRAFT SSDA SUBMISSION	MB	DJ	21/10/01

\*Registered Architect  
DHJ Diane H Jones NSW Arch 4778

Consultants

Client



Education

Architect  
PTW Architects  
Level 11, 88 Phillip Street  
Sydney NSW 2000 Australia  
T +61 2 9232 5877  
[ptw.com.au](http://ptw.com.au)

Peddie Thorp & Walker P/L  
ABN 23 000 454 624  
trading as PTW Architects

NSW Nominated Architects  
S Parsons Architect No.6098  
D Jones Architect No.4778



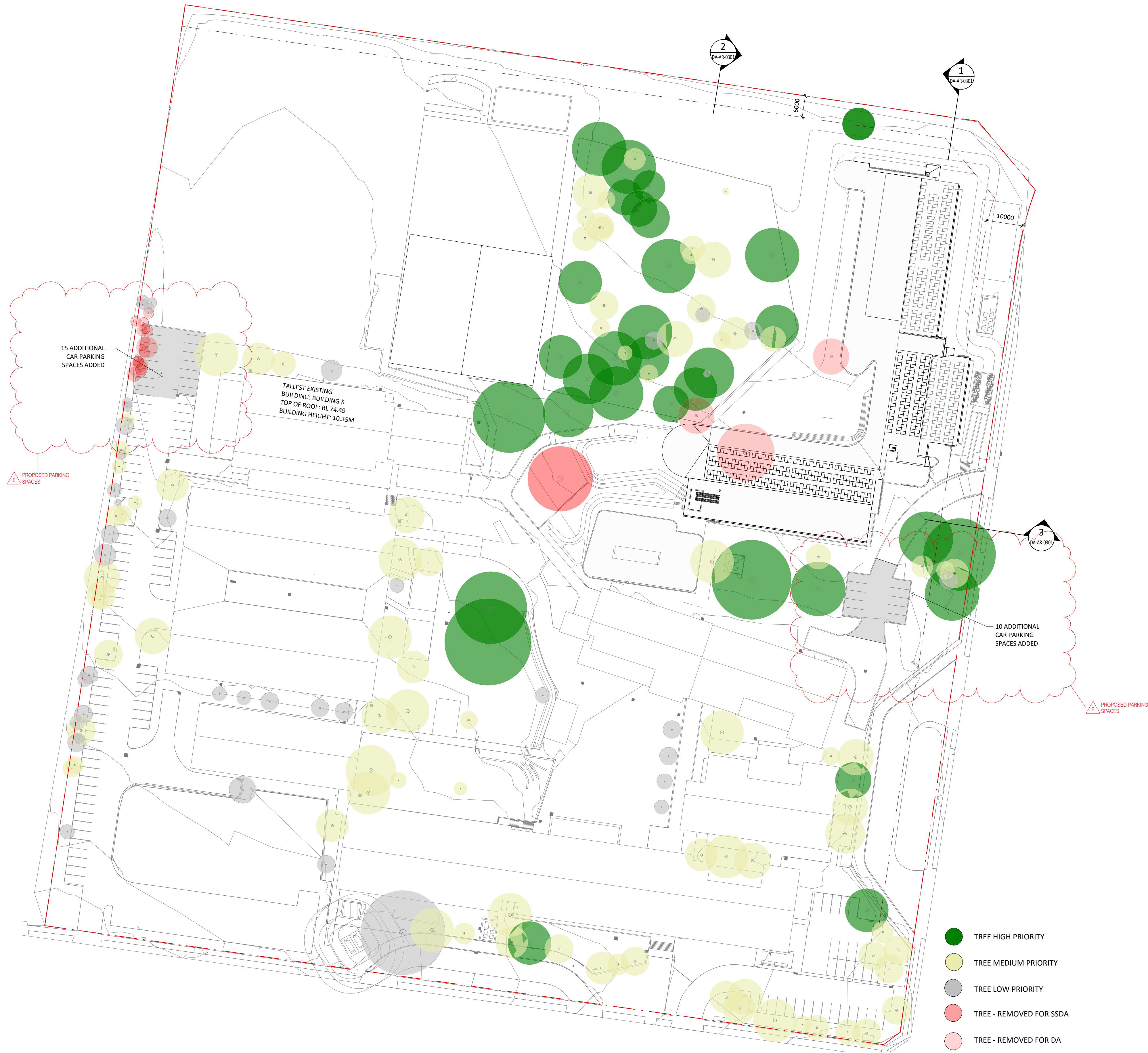
0 36 48  
As indicated  
Project PA030471  
**GLENWOOD HIGH SCHOOL**  
FORMAN AVENUE, GLENWOOD, NSW  
2768

Status  
SSDA SUBMISSION

Title  
SSDA  
**SITE PLAN - RL 69.875**  
Drawing Number  
**DA-AR-0022**

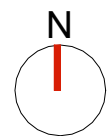
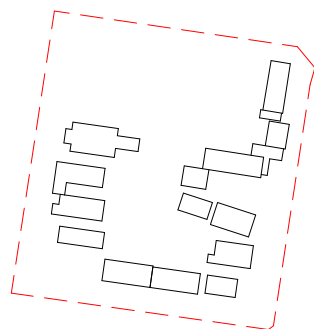
Revision  
**E**





1 SITE PLAN - ROOF  
1 : 600

Key Plan:



**Drawing Disclaimer:**  
Do not scale from drawings.  
Verify all dimensions on site before commencing work.  
Copying or reproduction of this drawing is strictly prohibited without the consent of PTW Architects

**Note**  
PTW takes no responsibility for external building elements. Anything connected with any design, materials selection, construction or installation of any cladding, facade or external building element must be checked by and remains the responsibility of others, including suitably qualified experts as may be required.

Rev	Amendment	By	Chk*	Date
E	SSDA SUBMISSION	FJ	DJ	22/09/12
D	SSDA SUBMISSION	FJ	DJ	21/11/10
C	DRAFT SSDA SUBMISSION	MB	DJ	21/11/01
B	DRAFT SSDA SUBMISSION	MB	DJ	21/10/25
A	DRAFT SSDA SUBMISSION	MB	DJ	21/10/01

**\*Registered Architect**  
DHJ Diane H Jones NSW Arch 4778

**Consultants**

**Client**



Education

**Architect**  
PTW Architects  
Level 11, 88 Phillip Street  
Sydney NSW 2000 Australia  
T +61 2 9232 5877  
[ptw.com.au](http://ptw.com.au)

Peddie Thorp & Walker P/L  
ABN 23 000 454 624  
trading as PTW Architects

NSW Nominated Architects  
S Parsons Architect No. 6098  
D Jones Architect No. 4778

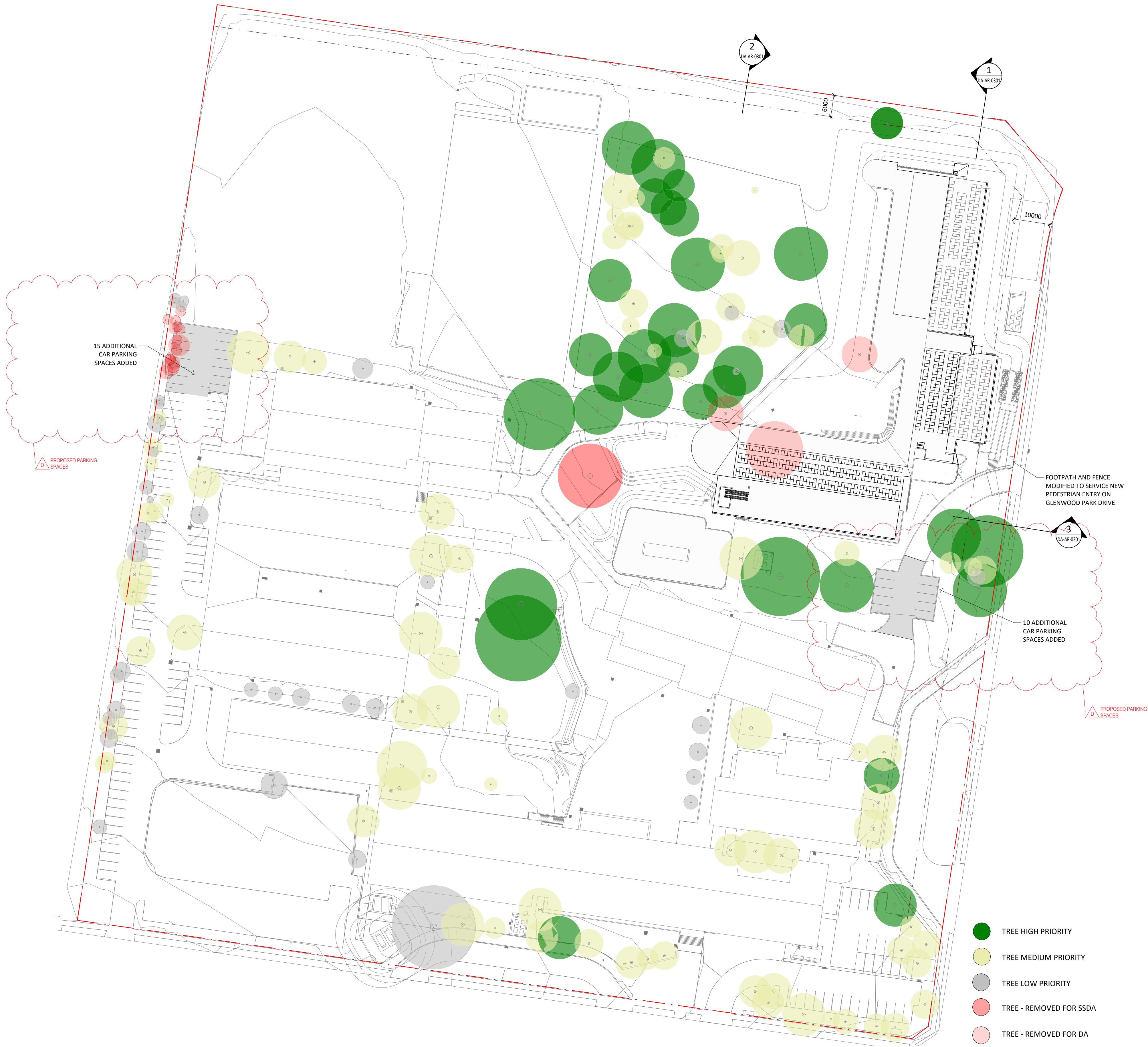


0 @ A1  
As indicated  
Project PA030471  
**GLENWOOD HIGH SCHOOL**  
FORMAN AVENUE, GLENWOOD, NSW  
2768  
Status  
SSDA SUBMISSION

36 48  
Title  
SSDA  
**SITE PLAN - ROOF**  
Drawing Number  
**DA-AR-0023**

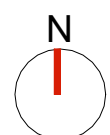
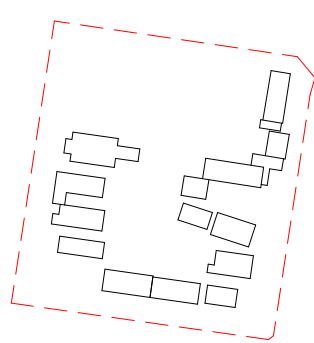
Revision  
**E**





1 SITE PLAN - ROOF  
1 : 600 @A1

Key Plan:



**Drawing Disclaimer:**  
Do not scale from drawings.  
Verify all dimensions on site before commencing work.  
Copying or reproduction of this drawing is strictly prohibited without the consent of PTW Architects

**Note**  
PTW takes no responsibility for external building elements. Anything connected with any design, materials selection, construction or installation of any cladding, facade or external building element must be checked by and remains the responsibility of others, including suitably qualified experts as may be required.

Rev	Amendment	By	Chk*	Date
D	SSDA SUBMISSION	FJ	DJ	22/09/12
C	SSDA SUBMISSION	FJ	DJ	21/11/10
B	DRAFT SSDA SUBMISSION	MB	DJ	21/11/01
A	DRAFT SSDA SUBMISSION	MB	DJ	21/10/25

*Registered Architect
DHJ Diane H Jones NSW Arch 4778

Consultants

Client



Education

**Architect**  
PTW Architects  
Level 11, 88 Phillip Street  
Sydney NSW 2000 Australia  
T +61 2 9232 5877  
[ptw.com.au](http://ptw.com.au)

Peddle Thorp & Walker P/L  
ABN 23 000 454 624  
trading as PTW Architects

NSW Nominated Architects  
S Parsons Architect No. 6098  
D Jones Architect No. 4778

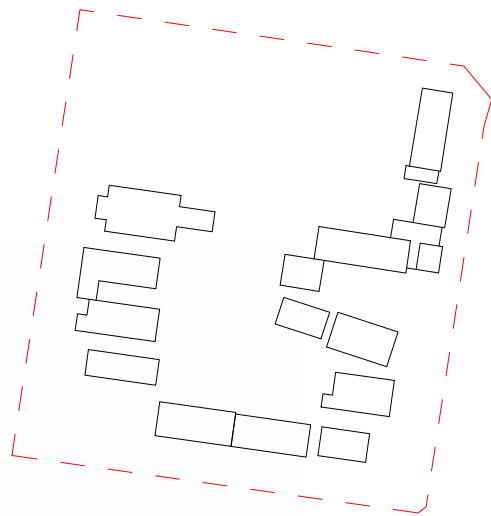


0 36 48  
As indicated  
Project PA030471  
**GLENWOOD HIGH SCHOOL**  
FORMAN AVENUE, GLENWOOD, NSW  
2768  
Status  
SSDA SUBMISSION

Title  
SSDA  
**PUBLIC DOMAIN PLAN**  
Drawing Number  
DA-AR-0024

Revision  
D

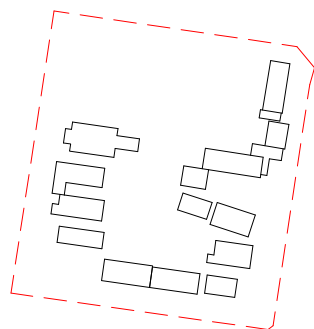




PROPOSED PARKING SPACES

PROPOSED PARKING SPACES

Key Plan:



**Drawing Disclaimer:**  
Do not scale from drawings.  
Verify all dimensions on site before commencing work.  
Copying or reproduction of this drawing is strictly prohibited without the consent of PTW Architects

**Note**  
PTW takes no responsibility for external building elements. Anything connected with any design, materials selection, construction or installation of any cladding, facade or external building element must be checked by and remains the responsibility of others, including suitably qualified experts as may be required.

Rev	Amendment	By	Chk*	Date
E	SSDA SUBMISSION	FJ	DJ	22/09/12
D	SSDA SUBMISSION	FJ	DJ	21/11/10
C	DRAFT SSDA SUBMISSION	MB	DJ	21/11/01
B	DRAFT SSDA SUBMISSION	MB	DJ	21/10/25
A	DRAFT SSDA SUBMISSION	MB	DJ	21/10/01

*Registered Architect		
DHJ	Diane H Jones	NSW Arch 4778

Consultants

Client



Education

**Architect**  
PTW Architects  
Level 11, 88 Phillip Street  
Sydney NSW 2000 Australia  
T +61 2 9232 5877  
[ptw.com.au](http://ptw.com.au)

Peddie Thorp & Walker P/L  
ABN 23 000 454 624  
trading as PTW Architects

NSW Nominated Architects  
S Parsons Architect No.6098  
D Jones Architect No.4778



Project PA030471

**GLENWOOD HIGH SCHOOL**  
FORMAN AVENUE, GLENWOOD, NSW  
2768

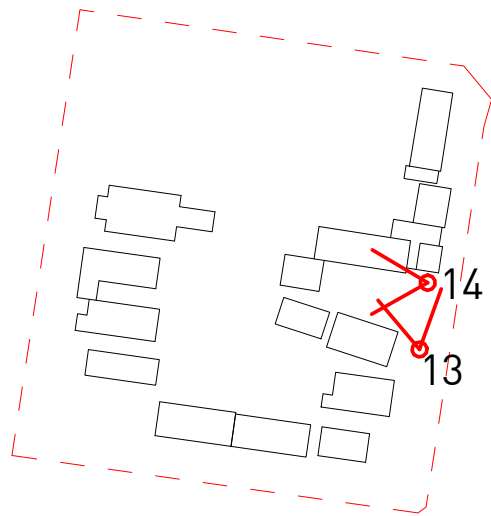
Status  
SSDA SUBMISSION

Title  
SSDA  
3D VIEW - AXONOMETRIC

Drawing Number  
DA-AR-0401

Revision  
E



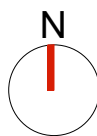
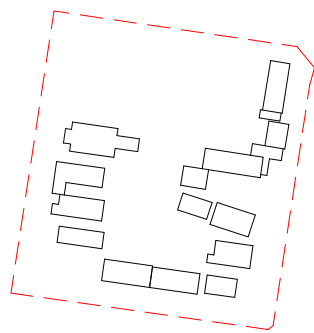


13 - VIEW LOOKING NORTH TOWARDS THE NEW BUILDING FROM BUILDING A



14 - VIEW LOOKING WEST TOWARDS THE PERFORMANCE ARTS UNIT AND THE NEW BUILDING

Key Plan:



**Drawing Disclaimer:**  
Do not scale from drawings.  
Verify all dimensions on site before commencing work.  
Copying or reproduction of this drawing is strictly prohibited without the consent of PTW Architects

**Note**  
PTW takes no responsibility for external building elements. Anything connected with any design, materials selection, construction or installation of any cladding, facade or external building element must be checked by and remains the responsibility of others, including suitably qualified experts as may be required.

Rev	Amendment	By	Chk*	Date
E	SSDA SUBMISSION	FJ	DJ	22/09/12
D	SSDA SUBMISSION	FJ	DJ	21/11/10
C	DRAFT SSDA SUBMISSION	MB	DJ	21/11/01
B	DRAFT SSDA SUBMISSION	MB	DJ	21/10/25
A	DRAFT SSDA SUBMISSION	MB	DJ	21/10/01

*Registered Architect		
DHJ	Diane H Jones	NSW Arch 4778

Consultants

Client



Education

Architect  
PTW Architects  
Level 11, 88 Phillip Street  
Sydney NSW 2000 Australia  
T +61 2 9232 5877  
[ptw.com.au](http://ptw.com.au)



Project PA030471  
**GLENWOOD HIGH SCHOOL**  
FORMAN AVENUE, GLENWOOD, NSW  
2768

Status  
SSDA SUBMISSION

Title  
SSDA  
3D VIEWS

Drawing Number  
DA-AR-0408

Revision  
E